

New Records of Eulophidae (Hymenoptera: Chalcidoidea) from Romania, Including Two New Species

Christer HANSSON*

Scientific Associate, Department of Life Sciences, Natural History Museum, Cromwell Road, London SW7 5BD, United Kingdom.

*corresponding author, e-mail: christerdennis@gmail.com

Received: February 12, 2016; Accepted: May 30, 2016; Available online: June 29, 2016; Printed: June 30, 2016

Abstract. Material from Romania, collected June 30 to July 5 in 2011, included 156 species of the family Eulophidae (Hymenoptera: Chalcidoidea). Of these, 126 species are newly recorded from Romania. One of the new records, *Neochrysocharis marginalis* Hansson, is also a new record for Europe, previously known only from North America. This material included specimens of two undescribed species which are described here as *Diaulinopsis albimaxilla* sp. n. and *Neochrysocharis pallidicornis* sp. n.

Key words. *Diaulinopsis albimaxilla*, *Neochrysocharis pallidicornis*, *Neochrysocharis marginalis*, new European record

INTRODUCTION

Compared to several other European countries the eulophid fauna of Romania is poorly investigated. Andriescu (1974) gave 69 records of Eulophidae of economic importance, nine of these were identified to genus only and not to species, and three of the records are *nomina nuda*, so the publication included records of 57 valid species. Moldovan (2007) included 82 species of Eulophidae in a checklist for Romania, but did not include all species given by Andriescu (1974), while Noyes (2016) listed 92 species from this country. Apart from these records there is one additional regional record, *Asecodes exxias* (Walker), in Pricop et al. (2012). Most of the data on the Romanian fauna of Eulophidae have been published by Ionel Andriescu and Ioan Suciú (e.g. Andriescu, 1971; Suciú, 1980), who described several new species, and also studied the parasitoid complexes of various phytophagous insects. However, these contributions are less comprehensive compared to Hungary, the neighbor to the West, where hymenopterists such as Jozsef Erdős and Gustav Szelenyi have contributed to this knowledge and today 487 species of Eulophidae are known from Hungary (Noyes, 2016). To increase the knowledge of the eulophid fauna in Romania a result from an analysis of a material collected during nine hours over six consecutive days in northern Romania is published here. The result also improves the knowledge of the Eulophidae in Europe as one new species record for Europe (*Neochrysocharis marginalis* Hansson) and two new species (*Diaulinopsis albimaxilla* and *Neochrysocharis pallidicornis*) are included. Apart from the species accounted for here there are several hundred eulophid specimens in this material that currently are not possible to identify. These belong to the subfamily Tetrastichinae, mainly to the genus *Aprostocetus* Westwood, but all specimens belonging to genus *Tetrastichus* Haliday are currently being analyzed and the result will be published elsewhere.

MATERIAL AND METHODS

All specimens were collected by John S. Noyes from the Natural History Museum (BMNH) in London, June 30 to July 5, 2011, and John spent almost nine hours in total collecting – see below under localities. The samples were collected with a sweep-net constructed as described by Noyes (1982), and the net was equipped with a screen in the opening, the screen had a mesh-size of 4 mm. The material is deposited in BMNH and has the access information “BMNH (Ent) 2011–111”.

The images were made using a Canon camera equipment including an EOS 70D body, MP E-65 macrolens, and macro twin lite MT-24 EX. The camera was attached to a Cognisys stackshot macrorail system. The picture stacking was done with Helicon Focus, version 6 software.

Localities

All localities are in Romania:

Suceava, Șaru Dornei, Neagra Șarului, 47°15'38"N, 25°21'10"E, 900 m a.s.l., peatbog, mesophilic grassland with *Picea*, *Salix* and *Betula*. Collecting time 20 minutes.

Suceava, Șaru Dornei, 47°17'51"N, 25°22'04"E, 830 m a.s.l., mesophilic grassland with *Salix* and *Alnus*. Collecting time 1.5 hours.

Iași, Breazu Mîrzești, 47°14'39"N, 27°28'58"E, 130 m a.s.l., steppe vegetation. Collecting time 2 hours.

Iași, Iași Botanical Gardens, 47°11'15"N, 27°32'56"E, 85 m a.s.l.. Collecting time 2 hours.

Iași, Bârnova Forest, nr Slobozia, 47°00'41"N, 27°36'11"E, 290 m a.s.l., mesophilic grassland with *Salix*, *Populus* and *Crataegus*. Collecting time 1.5 hours.

Iași, Bârnova Forest, Poiana cu Schit Nature Reserve, 46°59'07"N, 27°35'05"E, 340 m a.s.l., in a glade with *Quercus* and *Salix*. Collecting time 1.5 hours.

RESULTS

Diaulinopsis albimaxilla sp.n.

(Figs. 1A–E, 2F)

Material. Holotype male labeled “Romania: Iași, Breazu Mîrzești, 130m, 47°14'39"N, 27°28'58"E, 5.VII.2011, J.S. Noyes”, “BMNH (Ent) 2011–111”, in the Natural History Museum in London (BMNH). Paratypes: 1♀, 7♂♂ with same label data as holotype (BMNH); 2♂♂ “ROMANIA: Iași, Iași Bot. Gard., 85m, 47°11'15"N, 27°32'56"E, 30.VI.2011, J.S. Noyes”, “BMNH (Ent) 2011–111” (BMNH); 1♀ “Iași, Bârnova Forest, nr Slobozia, 290m, 47°00'41"N, 27°36'11"E, 4.VII.2011, J.S. Noyes”, “BMNH (Ent) 2011–111” (BMNH).

Diagnosis.

Male: similar to *Diaulinopsis arenaria* (Erdös): antenna with scape strongly swollen and completely dark, flagellum with two funiculars and a three-segmented clava (Figs. 1A, B); mesoscutum with deep and complete notauli (Fig. 2F); scutellum with complete lateral grooves (Fig. 2F); gaster dark with a large pale spot in anterior ½ (Fig. 2F) (one specimen with gaster completely dark in *D. albimaxilla*). *Diaulinopsis albimaxilla* differs from *D. arenaria* in having a shorter scape, not reaching above vertex (Fig. 1B), in *D. arenaria* the scape reaches above level of vertex with 1/3 of its length (Fig. 2B); flagellomeres with fewer setae, especially so on the funiculars (Fig. 1B), in *D. arenaria* the flagellomeres are clothed with setae (Fig. 2B); maxillae

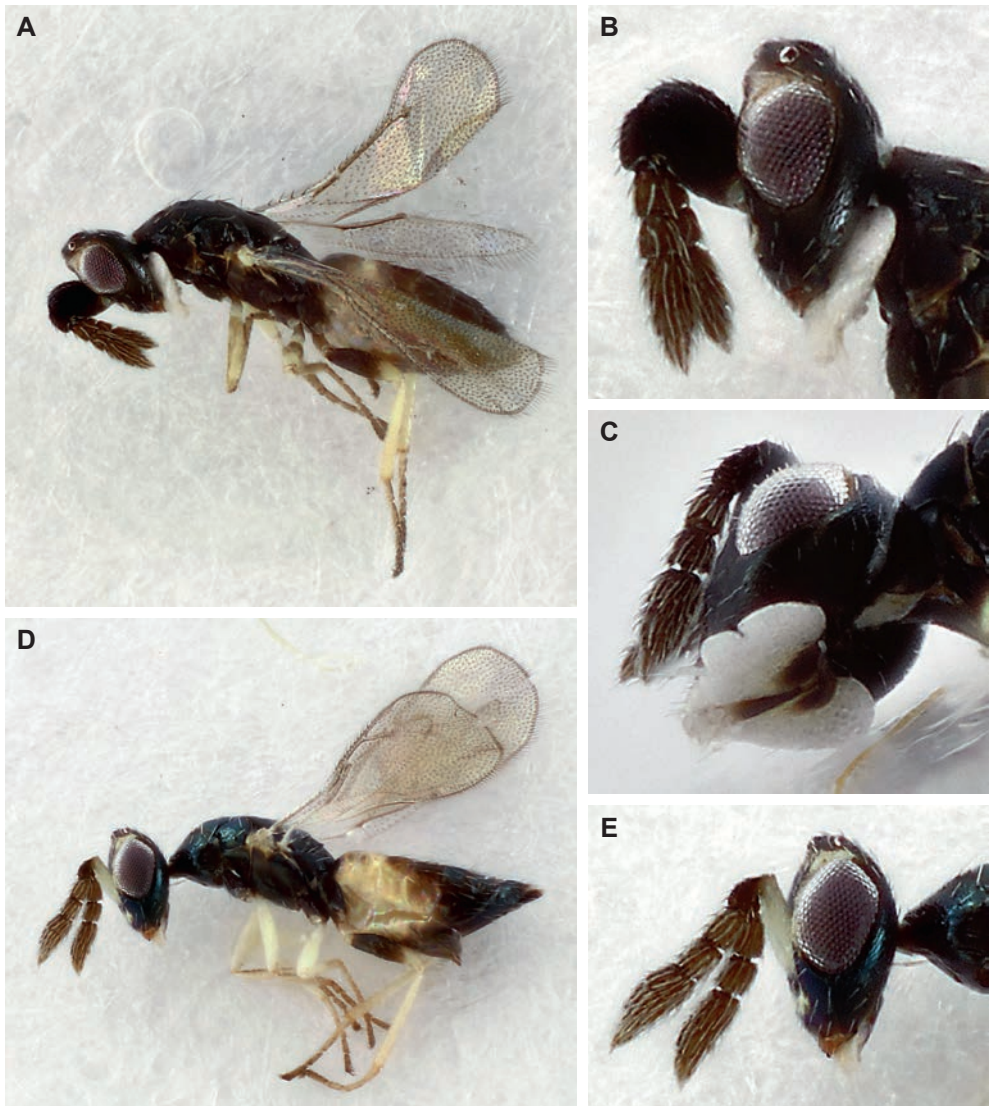


Fig. 1 – *Diaulinopsis albimaxilla* sp. n.: habitus in lateral view, holotype male (A), head in lateral view, holotype male (B), head from behind with mouthparts, paratype male (C), habitus in lateral view, paratype female (D), head in lateral view, paratype female (E). Length of specimens: males 1.0–1.1 mm, female 1.1 mm.

strongly enlarged and white (Fig. 1C), *D. arenaria* with maxillae “normal” in size and predominantly dark with only apical 1/3 and palpi white (Fig. 2C).

Female: very similar to the female of *Diaulinopsis arenaria*, differs only in the arrangement of sensilla on 1st flagellomere: *D. albimaxilla* with a single row of sensilla with attachment points at same level (Fig. 1E), *D. arenaria* with sensilla placed more irregular, i.e. not in single row (Fig. 2E).

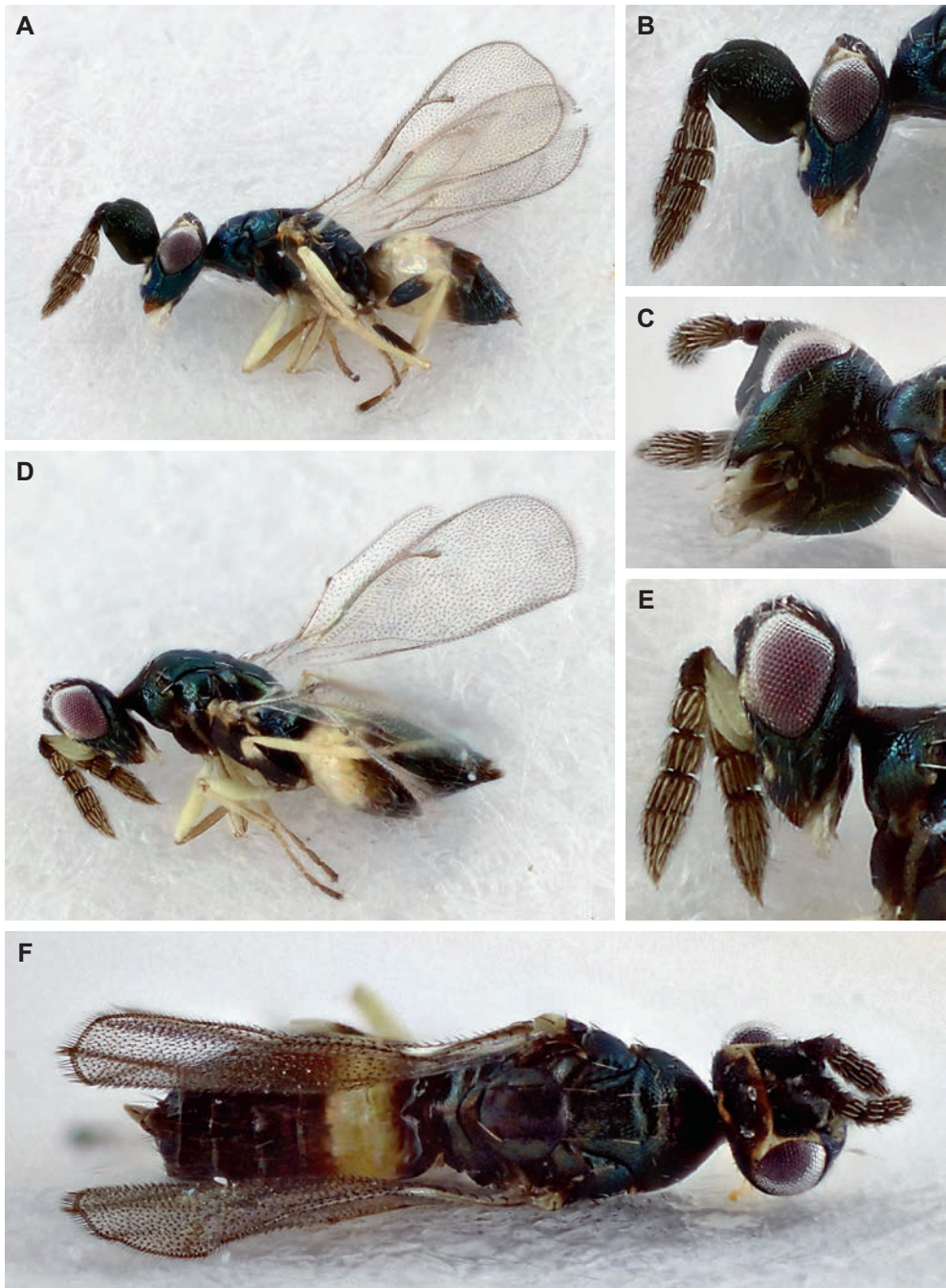


Fig. 2 – *Diaulinopsis* spp.: *D. arenaria*: habitus in lateral view, male (A), head in lateral view, male (B), head from behind with mouthparts, male (C), habitus in lateral view, female (D), head in lateral view, female (E); *D. albimaxilla* sp. n.: habitus in dorsal view, paratype male (F). Length of specimens: *D. arenaria* males 1.1–1.2 mm, female 1.2 mm; *D. albimaxilla* male 1.0 mm.

Description of male.

Length of body: 0.9–1.3 mm. Colour: Antenna dark brown (Figs. 1A, B). Head dark brown with a yellowish–brown spot just below toruli and with part just above frontal suture yellowish–brown; large specimen with head golden–green but with same pale areas as small specimens. Mouthparts with maxillae completely white (Fig. 1C). Mesosoma dark brown with metallic tints (Figs. 1A, 2F), large specimen with mesosoma golden–green. Coxae dark brown with metallic tints and tarsi pale brown becoming darker towards 4th tarsomere; fore leg with femur infusate, tibia pale brown; mid leg with femur pale brown in basal ½ and yellowish–white in apical ½, tibia yellowish–white; hind leg with femur dark brown with metallic tints in basal ¾, yellowish–white in apical ¼, tibia yellowish–white. Large specimen with fore and mid femora completely yellowish–white. Wings hyaline with veins greyish. Gaster varying from completely dark brown to dark brown with anterior 1/3 yellowish–white.

Head reticulate with small meshes throughout. Antenna: scape 1.8–2.0× as long as wide; with two discoid anelli; flagellomeres each with a single row of sensilla with attachment points at same level (Fig. 1B); flagellomere I 1.0–1.1× as long as wide, II 0.9× as long as wide, clava 2.4× as long as wide and 1.5× as long as flagellomeres I+II. Ratios of height of eye/malar space/mouth opening 1.3/1.0/1.3; distance between posterior ocelli/distance between one posterior ocellus and eye 2.2; width of head/width of mesosoma (measured at the widest part of mesoscutum) 1.2.

Mesosoma: pronotum 0.5× as long as wide and 0.8× as long as mesoscutum, reticulate with small and transverse meshes; mesoscutum 0.6× as long as wide, with deep and complete notauli, midlobe with two pair of setae, reticulate with small meshes, sidelobes with meshes ±isodiametric and midlobe with meshes elongate; scutellum 1.0× as long as wide and 1.0× as long as mesoscutum, with complete lateral grooves, ratio distance between grooves/distance between one groove and lateral margin of scutellum 2.4, with two pair of setae and with weaker reticulation than midlobe of mesoscutum hence more shiny, meshes of reticulation elongate; dorsellum 0.3× as long as scutellum, smooth and shiny; propodeum 0.5× as long as scutellum, shiny with very weak traces of reticulation, propodeal callus with four setae. Fore wing with submarginal vein with four setae on dorsal surface; costal cell in apical ½ with six setae on ventral surface; speculum small and closed below; stigmal vein long and slender, 4.4× as long as wide. Ratios of length of marginal/postmarginal/stigmal veins 3.0/1.5/1.0.

Petiole very small, just a narrow strip. Gaster about twice as long as wide (gaster frequently collapsed and difficult to measure). Ratio length of mesosoma/length of gaster 0.9–1.0.

Description of the female.

Length of body: 0.9–1.2 mm. Apart from the slender scape and “normal” maxillae, i.e. with maxillae not enlarged, the female is very similar to the male. Differs in having scape white with apical 1/3 dark to completely white (Fig. 1E), flagellum thicker and 2nd flagellomere 1.6× as wide as width of pedicel in lateral view; scape 3.5× as long as wide; flagellomere II more transverse, 0.7× as long as wide, clava 2.0× as long as wide and 1.3× as long as flagellomeres I+II.

Etymology: From the Latin *albus* = white, and *maxilla* = jawbone. Named after the white maxillae in males.

Neochrysocharis pallidicornis sp. n.
(Figs. 3A–F)

Material. Holotype female labeled “ROMANIA: Iași, Bot. Gard., 85m, 47°11’15”N, 27°32’56”E, 30.VI.2011, J.S. Noyes”, “BMNH (Ent) 2011–111”, in BMNH. Paratypes: 2♀♀ with same label data as holotype (BMNH); 1♀ 1♂ “Iași, Bârnova Forest, Slobozia, 290m, 47°00’41”N, 27°36’11”E, 4.VII.2011, J.S. Noyes”, “BMNH (Ent) 2011–111” (BMNH).

Diagnosis. Antennal flagellum yellowish–white in both sexes (Figs. 3A–D), female with scape white and pedicel with basal ½ brown and apical ½ pale yellowish–brown, male with scape and pedicel yellowish–white (Fig. 3C); legs white, except in female with basal ½ of mid coxa and entire hind coxa dark brown with metallic tinges (Fig. 3A); fore wing 1.5× as long as wide, hyaline with a small brown spot just below stigmal vein (Figs. 3A, D).

Identification. To include this new species in the latest key to European *Neochrysocharis* (Hansson 1990): couplet 13, first alternative leads to 14a instead of 14 and then:

- 14a. Antennal flagellum yellowish–white in both sexes (Figs. 3A–D)
 *Neochrysocharis pallidicornis* sp. n.
 – Antennal flagellum brown in both sexes 14

Description of the female.

Length of body: 0.9–1.0 mm. Colour: Scape white, pedicel with basal ½ brown and apical ½ pale yellowish–brown, flagellum yellowish–white (one paratype with entire pedicel brown and with 5th flagellomere brown). Head golden–green. Mesosoma metallic bluish–green. Legs white with basal ½ of mid coxa and entire hind coxa dark brown with metallic tinges (Fig. 3A). Wings hyaline, fore wing with a small brown spot just below stigmal vein (Figs. 3A, D). Gaster with tergites 1, 6 and 7 metallic bluish–green, tergites 2–5 metallic purple (Fig. 3D).

Head with strong reticulation, meshes small. Antenna with scape 3.8× as long as wide, flagellomere I 1.8×, and II 1.7× as long as wide, the three–segmented clava 4.3× as long as wide and 1.4× as long as flagellomeres I+II. Ratios of height of eye/malar space/mouth opening 2.6/1.0/1.2; distance between posterior ocelli/distance between one posterior ocellus and eye 3.5; width of head/width of mesosoma (measured at the widest part of mesoscutum) 1.2.

Mesoscutum 0.6× as long as wide, with notauli distinct only in anterior ½, reticulation very strong with small isodiametric meshes, midlobe with two pair of setae; scutellum 0.9× as long as wide and 0.9× as long as mesoscutum, with one pair of setae and with same reticulation as midlobe of mesoscutum; dorsellum 0.1× as long as scutellum, with weak reticulation; propodeum 0.3× as long as scutellum, with weak reticulation, propodeal callus with two setae. Fore wing speculum closed below (right fore wing in holotype slightly damaged (Fig. 3A)). Ratios of length of marginal/postmarginal/stigmal veins 8.8/1.0/2.3; length/width of fore wing 1.5.

Petiole very small, just a narrow strip. Gaster about twice as long as wide. Ratio length of mesosoma/length of gaster 0.8.

Description of the male

Length of body: 0.7 mm. Differs from the female in having entire antenna yellowish–white (Fig. 3C), scape 3.0× as long as wide (Fig. 3F), reticulation on thoracic dorsum weaker and propodeum smooth, entire legs white, infuscate spot

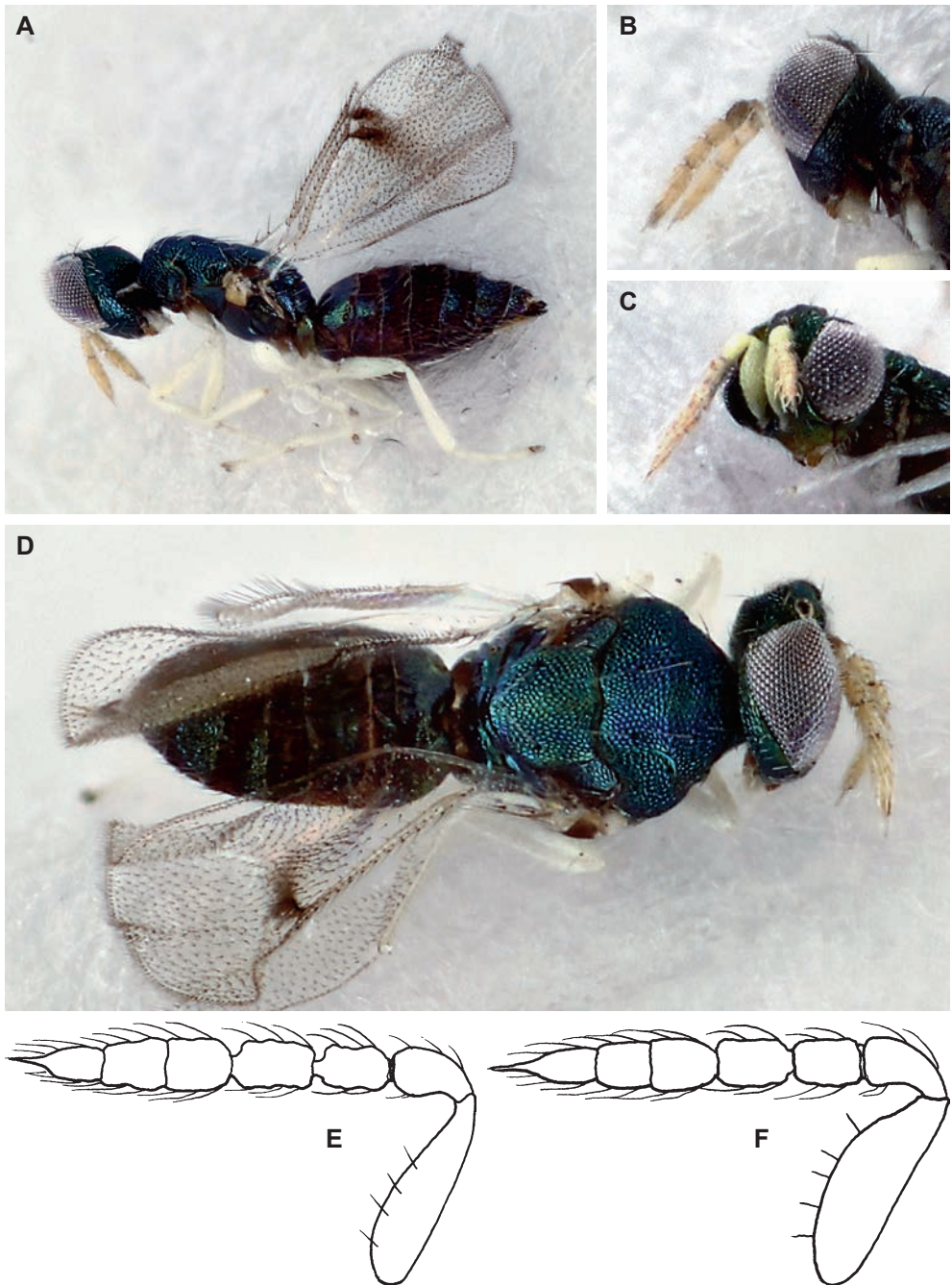


Fig. 3 – *Neochrysocharis pallidicornis* sp. n.: habitus in lateral view, holotype female (A), head in lateral view, paratype female (B), head in oblique frontal view, paratype male (C), habitus in dorsal view, paratype female (D), antenna in lateral view, paratype female (E), antenna in lateral view, paratype male (F). Length of specimens: females 0.9–1.0 mm, male 0.7 mm.

below stigma vein in fore wing very weak, gaster shorter, ratio length of mesosoma/length of gaster 1.1, and with a pale spot in anterior $\frac{1}{2}$.

Etymology: From the Latin *pallidus* = pale, and *cornu* = horn, antenna. Named after the pale antennal flagellum in both sexes.

New records for Romania

Achrysocharoides cruentus Hansson, 1983

Material: 1♀, Iași, Bârnova Forest, nr Slobozia, 4.VII.2011.

Achrysocharoides insignitellae (Erdős, 1966)

Material: 2♀♀, Iași, Bârnova Forest, Poiana cu Schit Nature Reserve, 4.VII.2011.

Achrysocharoides latreilleii (Curtis, 1826)

Material: 1♂, Iași, Iași Botanical Gardens, 30.VI.2011.

Achrysocharoides platanoidae Hansson&Shevtsova, 2010

Material: 1♀, Iași, Iași Botanical Gardens, 30.VI.2011.

Achrysocharoides splendens (Delucchi, 1954)

Material: 1♀, Suceava, Șaru Dornei, 3.VII.2011; 1♂, Iași, Bârnova Forest, nr Slobozia, 4.VII.2011.

Aprostocetus aristaeus (Walker, 1839)

Material: 1♀, Suceava, nr Șaru Dornei, Neagra Șarului, 3.VII.2011.

Aprostocetus clavicornis (Zetterstedt, 1838)

Material: 1♂, Suceava, nr Șaru Dornei, Neagra Șarului, 3.VII.2011.

Aprostocetus crino (Walker, 1838)

Material: 5♂♂, Iași, Iași Botanical Gardens, 30.VI.2011; 11♂♂, Iași, Bârnova Forest, nr Slobozia, 4.VII.2011; 1♀, 14♂♂, Iași, Bârnova Forest, Poiana cu Schit Nature Reserve, 4.VII.2011.

Aprostocetus distichus Graham, 1961

Material: 1♀, Iași, Breazu Mîrzești, 5.VII.2011; 2♀♀, Iași, Iași Botanical Gardens, 30.VI.2011; 2♀♀, Iași, Bârnova Forest, nr Slobozia, 4.VII.2011.

Aprostocetus oreophilus (Förster, 1861)

Material: 3♂♂, Iași, Breazu Mîrzești, 5.VII.2011; 1♀, Iași, Iași Botanical Gardens, 30.VI.2011; 1♀, 10♂♂, Iași, Bârnova Forest, nr Slobozia, 4.VII.2011; 1♀, Iași, Bârnova Forest, Poiana cu Schit Nature Reserve, 4.VII.2011.

Aprostocetus pausiris (Walker, 1839)

Material: 8♀♀, Iași, Breazu Mîrzești, 5.VII.2011; 17♀♀, Iași, Iași Botanical Gardens, 30.VI.2011.

Aprostocetus percaudatus (Silvestri, 1920)

Material: 1♀, Iași, Iași Botanical Gardens, 30.VI.2011.

Aprostocetus rufus (Bakkendorf, 1953)

Material: 1♂, Iași, Iași Botanical Gardens, 30.VI.2011.

Aprostocetus setosulus Graham, 1987

Material: 2♀♀, Suceava, nr Șaru Dornei, Neagra Șarului, 3.VII.2011; 1♂, Suceava, Șaru Dornei, 3.VII.2011; 1♀, Iași, Breazu Mîrzești, 5.VII.2011; 1♀, Iași, Iași Botanical Gardens, 30.VI.2011; 8♀♀, Iași, Bârnova Forest, nr Slobozia, 4.VII.2011.

Aprostocetus truncatulus Graham, 1987

Material: 1♀, Iași, Breazu Mîrzești, 5.VII.2011; 2♀♀, Iași, Iași Botanical Gardens, 30.VI.2011.

Aprostocetus venustus (Gahan, 1914)

Material: 2♂♂, Iași, Breazu Mîrzești, 5.VII.2011; 1♀ 1♂, Iași, Bârnova Forest, nr Slobozia, 4.VII.2011.

Asecodes congruens (Nees, 1834)

Material: 1♀ 1♂, Suceava, nr Șaru Dornei, Neagra Șarului, 3.VII.2011; 2♀♀ 1♂, Suceava, Șaru Dornei, 3.VII.2011.

Asecodes delucchii (Bouček, 1971)

Material: 1♀, Iași, Bârnova Forest, nr Slobozia, 4.VII.2011.

Asecodes parviclava (Thomson, 1878)

Material: 1♀, Iași, Iași Botanical Gardens, 30.VI.2011.

Baryscapus gradwelli Graham, 1991

Material: 1♂, Iași, Iași Botanical Gardens, 30.VI.2011.

Ceranisis menes (Walker, 1839)

Material: 14♀♀, Iași, Breazu Mîrzești, 5.VII.2011; 66♀♀, Iași, Iași Botanical Gardens, 30.VI.2011; 2♀♀, Iași, Bârnova Forest, Poiana cu Schit Nature Reserve, 4.VII.2011.

Ceranisis pacuvius (Walker, 1838)

Material: 1♀, Iași, Breazu Mîrzești, 5.VII.2011; 2♀♀ 1♂, Iași, Iași Botanical Gardens, 30.VI.2011; 1♂, Iași, Bârnova Forest, nr Slobozia, 4.VII.2011.

Chrysocharis amanus (Walker, 1839)

Material: 1♂, Iași, Iași Botanical Gardens, 30.VI.2011; 1♀, Iași, Bârnova Forest, nr Slobozia, 4.VII.2011; 1♀, Iași, Bârnova Forest, Poiana cu Schit Nature Reserve, 4.VII.2011.

Chrysocharis assis (Walker, 1839)

Material: 1♀, Suceava, nr Șaru Dornei, Neagra Șarului, 3.VII.2011; 1♂, Iași, Iași Botanical Gardens, 30.VI.2011; 2♀♀ 1♂, Iași, Bârnova Forest, nr Slobozia, 4.VII.2011.

Chrysocharis chlorus Graham, 1963

Material: 1♀, Iași, Breazu Mîrzești, 5.VII.2011.

Chrysocharis eurynota Graham, 1963

Material: 1♀, Iași, Iași Botanical Gardens, 30.VI.2011.

Chrysocharis liriomyzae Delucchi, 1954

Material: 1♀ 1♂, Suceava, Șaru Dornei, 3.VII.2011.; 5♀♀, Iași, Iași Botanical Gardens, 30.VI.2011.

Chrysocharis mediana Förster, 1861

Material: 6♀♀ 1♂, Iași, Iași Botanical Gardens, 30.VI.2011.

Chrysocharis orbicularis (Nees, 1834)

Material: 1♀, Suceava, nr Șaru Dornei, Neagra Șarului, 3.VII.2011.

Chrysocharis pallipes (Nees, 1834)

Material: 3♂♂, Suceava, Șaru Dornei, 3.VII.2011.

Chrysocharis polyzo (Walker, 1839)

Material: 1♀, Suceava, Șaru Dornei, 3.VII.2011.

Chrysocharis prodice (Walker, 1839)

Material: 1♀ 2♂♂, Iași, Iași Botanical Gardens, 30.VI.2011; 1♂, Iași, Bârnova Forest, nr Slobozia, 4.VII.2011.

Chrysocharis pubicornis (Zetterstedt, 1838)

Material: 1♀, Suceava, Șaru Dornei, 3.VII.2011; 1♂, Iași, Bârnova Forest, nr Slobozia, 4.VII.2011.

Chrysocharis submutica Graham, 1963

Material: 1♀ 2♂♂, Iași, Breazu Mîrzești, 5.VII.2011; 9♀♀ 21♂♂, Iași, Iași Botanical Gardens, 30.VI.2011; 1♀, Iași, Bârnova Forest, Poiana cu Schit Nature Reserve, 4.VII.2011.

Chrysocharis viridis (Nees, 1834)

Material: 6♀♀ 4♂♂, Suceava, Șaru Dornei, 3.VII.2011; 2♀♀, Iași, Iași Botanical Gardens, 30.VI.2011.

Closterocerus lyonetae (Ferrière, 1952)

Material: 7♀♀ 1♂, Iași, Iași Botanical Gardens, 30.VI.2011; 3♀♀, Iași, Bârnova Forest, nr Slobozia, 4.VII.2011; 1♀, Iași, Bârnova Forest, Poiana cu Schit Nature Reserve, 4.VII.2011.

Derostenus gemmeus Westwood, 1833

Material: 1♂, Iași, Bârnova Forest, Poiana cu Schit Nature Reserve, 4.VII.2011.

Derostenus punctiscuta Thomson, 1878

Material: 4♀♀, Iași, Bârnova Forest, nr Slobozia, 4.VII.2011; 2♀♀, Iași, Bârnova Forest, Poiana cu Schit Nature Reserve, 4.VII.2011.

Diglyphus albiscapus Erdős, 1951

Material: 1♀, Iași, Iași Botanical Gardens, 30.VI.2011.

Diglyphus isaea (Walker, 1838)

Material: 1♀ 4♂♂, Suceava, nr Șaru Dornei, Neagra Șarului, 3.VII.2011; 2♀♀ 1♂, Suceava, Șaru Dornei, 3.VII.2011.

Diglyphus minoens (Walker, 1838)

Material: 1♀, Suceava, nr Șaru Dornei, Neagra Șarului, 3.VII.2011.

Elachertus charondas (Walker, 1839)

Material: 1♂, Iași, Iași Botanical Gardens, 30.VI.2011.

Elachertus fenestratus (Nees, 1834)

Material: 1♂, Iași, Bârnova Forest, Poiana cu Schit Nature Reserve, 4.VII.2011.

Elachertus inunctus (Nees, 1834)

Material: 1♂, Suceava, nr Șaru Dornei, Neagra Șarului, 3.VII.2011; 2♂♂, Suceava, Șaru Dornei, 3.VII.2011.

Elachertus lateralis (Spinola, 1808)

Material: 1♂, Suceava, Șaru Dornei, 3.VII.2011; 1♂, Iași, Iași Botanical Gardens, 30.VI.2011; 2♀♀, Iași, Bârnova Forest, Poiana cu Schit Nature Reserve, 4.VII.2011.

Entedon fufius Walker, 1846

Material: 4♂♂, Iași, Iași Botanical Gardens, 30.VI.2011.

Entedon gracilior Graham, 1971

Material: 1♀, Suceava, Șaru Dornei, 3.VII.2011; 1♀, Iași, Iași Botanical Gardens, 30.VI.2011.

Entedon heyeri (Ratzeburg, 1848)

Material: 8♀♀ 1♂, Iași, Breazu Mîrzești, 5.VII.2011; 2♀♀ 6♂♂, Iași, Iași Botanical Gardens, 30.VI.2011; 1♂, Iași, Bârnova Forest, nr Slobozia, 4.VII.2011.

Entedon leucocnemis Erdős, 1944

Material: 1♀, Iași, Bârnova Forest, nr Slobozia, 4.VII.2011.

Entedon parvicalcar Thomson, 1878

Material: 1♀ 9♂♂, Iași, Iași Botanical Gardens, 30.VI.2011.

Entedon pharnus Walker, 1839

Material: 1♀, Iași, Breazu Mîrzești, 5.VII.2011; 10♀♀, Iași, Iași Botanical Gardens, 30.VI.2011; 1♀, Iași, Bârnova Forest, nr Slobozia, 4.VII.2011.

Entedon punctiscapus Thomson, 1878

Material: 2♀♀, Iași, Iași Botanical Gardens, 30.VI.2011; 5♀♀ 4♂♂, Iași, Bârnova Forest, nr Slobozia, 4.VII.2011; 8♀♀ 1♂, Iași, Bârnova Forest, Poiana cu Schit Nature Reserve, 4.VII.2011.

Entedon squamosus Thomson, 1878

Material: 1♀, Iași, Bârnova Forest, Poiana cu Schit Nature Reserve, 4.VII.2011.

Entedon subovatus Thomson, 1878

Material: 1♂, Iași, Iași Botanical Gardens, 30.VI.2011.

Entedonomphale bulgaricus Boyadzhiev & Triapitsyn, 2007

Material: 1♂, Iași, Iași Botanical Gardens, 30.VI.2011.

Entedonomphale carbonaria (Erdős, 1954)

Material: 1♂, Iași, Bârnova Forest, nr Slobozia, 4.VII.2011.

Euderomphale cerris Erdős, 1961

Material: 1♂, Iași, Bârnova Forest, nr Slobozia, 4.VII.2011.

Euderus agrili Bouček, 1963

Material: 1♀, Suceava, Șaru Dornei, 3.VII.2011; 1♀, Iași, Iași Botanical Gardens, 30.VI.2011.

Euderus brevicornis Bouček, 1963

Material: 6♀♀ 7♂♂, Iași, Breazu Mîrzești, 5.VII.2011; 1♂, Iași, Bârnova Forest, nr Slobozia, 4.VII.2011.

Eulophus abdominalis Nees, 1834

Material: 1♀, Suceava, Șaru Dornei, 3.VII.2011.

Eulophus cyanescens Bouček, 1959

Material: 1♀, Iași, Iași Botanical Gardens, 30.VI.2011.

Hemiptarsenus ornatus (Nees, 1834)

Material: 1♀, Iași, Iași Botanical Gardens, 30.VI.2011.

Hemiptarsenus unguicellus (Zetterstedt, 1838)

Material: 1♂, Suceava, nr Șaru Dornei, Neagra Șarului, 3.VII.2011; 5♀♀ 1♂, Suceava, Șaru Dornei, 3.VII.2011; 1♀, Iași, Iași Botanical Gardens, 30.VI.2011; 1♀, Iași, Bârnova Forest, Poiana cu Schit Nature Reserve, 4.VII.2011.

Hyssopus geniculatus (Hartig, 1838)

Material: 1♂, Suceava, nr Șaru Dornei, Neagra Șarului, 3.VII.2011.

Hyssopus nigrutilus (Zetterstedt, 1838)

Material: 1♂, Suceava, nr Șaru Dornei, Neagra Șarului, 3.VII.2011.

Hyssopus olivaceus (Thomson, 1878)

Material: 1♂, Iași, Iași Botanical Gardens, 30.VI.2011.

Ionympha carne (Walker, 1839)

Material: 2♀♀, Suceava, Șaru Dornei, 3.VII.2011; 1♀, Iași, Iași Botanical Gardens, 30.VI.2011; 5♀♀, Iași, Bârnova Forest, Poiana cu Schit Nature Reserve, 4.VII.2011.

Ionympha ochus (Walker, 1839)

Material: 1♀ 1♂, Suceava, Șaru Dornei, 3.VII.2011; 2♀♀, Iași, Iași Botanical Gardens, 30.VI.2011; 1♀, Iași, Bârnova Forest, nr Slobozia, 4.VII.2011; 1♀, Iași, Bârnova Forest, Poiana cu Schit Nature Reserve, 4.VII.2011.

Mestocharis bimacularis (Dalman, 1820)

Material: 4♂♂, Suceava, Șaru Dornei, 3.VII.2011; 1♀, Iași, Iași Botanical Gardens, 30.VI.2011.

Mestocharis maculata (Förster, 1841)

Material: 4♀♀, Iași, Iași Botanical Gardens, 30.VI.2011.

Minotetrastichus loxotoma (Graham, 1961)

Material: 3♀♀, Suceava, Șaru Dornei, 3.VII.2011.

Minotetrastichus prolongatus Graham, 1987

Material: 7♀♀, Iași, Breazu Mîrzești, 5.VII.2011; 3♀♀, Iași, Iași Botanical Gardens, 30.VI.2011; 1♀, Iași, Bârnova Forest, Poiana cu Schit Nature Reserve, 4.VII.2011.

Minotetrastichus treron Graham, 1987

Material: 3♀♀, Iași, Breazu Mîrzești, 5.VII.2011; 5♀♀ 3♂♂, Iași, Iași Botanical Gardens, 30.VI.2011; 3♀♀, Iași, Bârnova Forest, nr Slobozia, 4.VII.2011; 2♀♀, Iași, Bârnova Forest, Poiana cu Schit Nature Reserve, 4.VII.2011.

Miotropis unipuncta (Nees, 1834)

Material: 1♀ 1♂, Iași, Iași Botanical Gardens, 30.VI.2011; 1♀ 2♂♂, Iași, Bârnova Forest, Poiana cu Schit Nature Reserve, 4.VII.2011.

Necremnus cosconius (Walker, 1839)

Material: 1♀, Iași, Bârnova Forest, nr Slobozia, 4.VII.2011.

Necremnus hungaricus (Erdős, 1951)

Material: 3♀♀, Iași, Breazu Mîrzești, 5.VII.2011; 3♀♀ 1♂, Iași, Iași Botanical Gardens, 30.VI.2011; 1♀, Iași, Bârnova Forest, nr Slobozia, 4.VII.2011.

Necremnus leucarthros (Nees, 1834)

Material: 1♂, Suceava, nr Șaru Dornei, Neagra Șarului, 3.VII.2011; 2♀♀, Suceava, Șaru Dornei, 3.VII.2011; 1♀, Iași, Breazu Mîrzești, 5.VII.2011; 1♀, Iași, Iași Botanical Gardens, 30.VI.2011; 2♀♀ 1♂, Iași, Bârnova Forest, nr Slobozia, 4.VII.2011.

Necremnus tidius (Walker, 1839)

Material: 1♀, Iași, Bârnova Forest, nr Slobozia, 4.VII.2011.

Neochrysocharis arvensis Graham, 1963

Material: 2♀♀, Iași, Breazu Mîrzești, 5.VII.2011; 42♀♀ 7♂♂, Iași, Iași Botanical Gardens, 30.VI.2011; 1♀ 1♂, Iași, Bârnova Forest, nr Slobozia, 4.VII.2011; 8♀♀, Iași, Bârnova Forest, Poiana cu Schit Nature Reserve, 4.VII.2011.

Neochrysocharis cuprifrons Erdős, 1954

Material: 1♀, Suceava, Șaru Dornei, 3.VII.2011; 20♀♀ 6♂♂, Iași, Breazu Mîrzești, 5.VII.2011; 6♀♀ 8♂♂, Iași, Iași Botanical Gardens, 30.VI.2011; 3♀♀ 2♂♂, Iași, Bârnova Forest, nr Slobozia, 4.VII.2011; 1♀ 1♂, Iași, Bârnova Forest, Poiana cu Schit Nature Reserve, 4.VII.2011.

Neochrysocharis marginalis Hansson, 1995

Material: 6♀♀ 2♂♂, Iași, Iași Botanical Gardens, 30.VI.2011.

Neochrysocharis microstoma (Graham, 1963)

Material: 2♀♀, Iași, Breazu Mîrzești, 5.VII.2011; 8♀♀ 4♂♂, Iași, Iași Botanical Gardens, 30.VI.2011; 2♀♀, Iași, Bârnova Forest, nr Slobozia, 4.VII.2011; 2♀♀, Iași, Bârnova Forest, Poiana cu Schit Nature Reserve, 4.VII.2011.

Neochrysocharis pictipes (Crawford, 1912)

Material: 5♀♀ 15♂♂, Iași, Breazu Mîrzești, 5.VII.2011; 6♀♀ 6♂♂, Iași, Iași Botanical Gardens, 30.VI.2011; 1♀, Iași, Bârnova Forest, nr Slobozia, 4.VII.2011.

Neotrichoporoides mediterraneus Graham, 1987

Material: 3♀♀ 3♂♂, Iași, Breazu Mîrzești, 5.VII.2011.

Neotrichoporoides szelenyii (Erdős, 1951)

Material: 2♀♀, Iași, Iași Botanical Gardens, 30.VI.2011.

Omphale brevivuccata Szelenyi, 1978

Material: 1♀, Iași, Iași Botanical Gardens, 30.VI.2011.

Omphale chryseis Graham, 1963

Material: 11♀♀ 38♂♂, Iași, Iași Botanical Gardens, 30.VI.2011; 1♀, Iași, Bârnova Forest, nr Slobozia, 4.VII.2011.

Omphale clymene (Walker, 1839)

Material: 4♀♀, Iași, Iași Botanical Gardens, 30.VI.2011; 3♀♀, Iași, Bârnova Forest, nr Slobozia, 4.VII.2011; 11♀♀, Iași, Bârnova Forest, Poiana cu Schit Nature Reserve, 4.VII.2011.

Omphale connectens Graham, 1963

Material: 8♀♀ 1♂, Iași, Iași Botanical Gardens, 30.VI.2011; 1♀, Iași, Bârnova Forest, nr Slobozia, 4.VII.2011; 1♂, Iași, Bârnova Forest, Poiana cu Schit Nature Reserve, 4.VII.2011.

Omphale isander (Walker, 1839)

Material: 6♀♀ 3♂♂, Iași, Bârnova Forest, Poiana cu Schit Nature Reserve, 4.VII.2011.

Omphale lugens (Nees, 1834)

Material: 7♀♀, Suceava, nr Șaru Dornei, Neagra Șarului, 3.VII.2011.

Omphale obscura (Förster, 1841)

Material: 2♀♀, Suceava, Șaru Dornei, 3.VII.2011; 1♀, Iași, Bârnova Forest, nr Slobozia, 4.VII.2011.

Omphale phruron (Walker, 1839)

Material: 1♀, Iași, Breazu Mîrzești, 5.VII.2011; 3♀♀ 2♂♂, Iași, Iași Botanical Gardens, 30.VI.2011.

Omphale rubigus (Walker, 1839)

Material: 5♀♀, Suceava, nr Șaru Dornei, Neagra Șarului, 3.VII.2011; 4♀♀ 1♂, Iași, Breazu Mîrzești, 5.VII.2011.

Omphale salicis Haliday, 1833

Material: 3♀♀, Suceava, Șaru Dornei, 3.VII.2011; 1♀ 2♂♂, Iași, Iași Botanical Gardens, 30.VI.2011; 4♀♀ 9♂♂, Iași, Bârnova Forest, Poiana cu Schit Nature Reserve, 4.VII.2011.

Omphale sulciscuta (Thomson, 1878)

Material: 17♀♀, Iași, Breazu Mîrzești, 5.VII.2011; 8♀♀, Iași, Iași Botanical Gardens, 30.VI.2011.

Omphale theana (Walker, 1839)

Material: 2♀♀, Suceava, Șaru Dornei, 3.VII.2011; 1♂, Iași, Iași Botanical Gardens, 30.VI.2011; 2♀♀, Iași, Bârnova Forest, nr Slobozia, 4.VII.2011; 1♀, Iași, Bârnova Forest, Poiana cu Schit Nature Reserve, 4.VII.2011.

Oomyzus anomalus Graham, 1987

Material: 1♀, Iași, Iași Botanical Gardens, 30.VI.2011.

Oomyzus galerucivorus (Hedqvist, 1959)

Material: 1♂, Iași, Bârnova Forest, Poiana cu Schit Nature Reserve, 4.VII.2011.

Oomyzus incertus (Ratzeburg, 1844)

Material: 4♀♀, Iași, Breazu Mîrzești, 5.VII.2011; 2♀♀ 1♂, Iași, Iași Botanical Gardens, 30.VI.2011; 2♀♀ 4♂♂, Iași, Bârnova Forest, nr Slobozia, 4.VII.2011; 3♀♀, Iași, Bârnova Forest, Poiana cu Schit Nature Reserve, 4.VII.2011.

Pediobius brachycerus (Thomson, 1878)

Material: 1♀ 1♂, Iași, Breazu Mîrzești, 5.VII.2011; 1♀, Iași, Bârnova Forest, nr Slobozia, 4.VII.2011; 1♀, Iași, Bârnova Forest, Poiana cu Schit Nature Reserve, 4.VII.2011.

Pediobius bruchicida (Rondani, 1872)

Material: 1♂, Iași, Iași Botanical Gardens, 30.VI.2011.

Pediobius cassidae Erdős, 1958

Material: 3♀♀ 5♂♂, Iași, Breazu Mîrzești, 5.VII.2011; 8♀♀ 24♂♂, Iași, Iași Botanical Gardens, 30.VI.2011; 1♀, Iași, Bârnova Forest, nr Slobozia, 4.VII.2011; 3♀♀ 1♂, Iași, Bârnova Forest, Poiana cu Schit Nature Reserve, 4.VII.2011.

Pediobius facialis (Giraud, 1863)

Material: 1♀, Iași, Iași Botanical Gardens, 30.VI.2011.

Pediobius foliorum (Geoffroy, 1785)

Material: 1♀, Suceava, nr Șaru Dornei, Neagra Șarului, 3.VII.2011; 1♀, Suceava, Șaru Dornei, 3.VII.2011; 4♂♂, Iași, Bârnova Forest, Poiana cu Schit Nature Reserve, 4.VII.2011.

Pediobius longicornis (Erdős, 1954)

Material: 1♀ 3♂♂, Iași, Breazu Mîrzești, 5.VII.2011.

Pediobius metallicus (Nees, 1834)

Material: 2♀♀ 2♂♂, Suceava, nr Șaru Dornei, Neagra Șarului, 3.VII.2011; 6♀♀ 6♂♂, Suceava, Șaru Dornei, 3.VII.2011; 1♀ 5♂♂, Iași, Breazu Mîrzești, 5.VII.2011; 13♀♀ 7♂♂, Iași, Iași Botanical Gardens, 30.VI.2011; 1♀ 3♂♂, Iași, Bârnova Forest, nr Slobozia, 4.VII.2011; 2♂♂, Iași, Bârnova Forest, Poiana cu Schit Nature Reserve, 4.VII.2011.

Pediobius phragmitis Bouček, 1965

Material: 1♀, Iași, Breazu Mîrzești, 5.VII.2011.

Pnigalio cristatus (Ratzeburg, 1848)

Material: 1♀, Iași, Iași Botanical Gardens, 30.VI.2011.

Pnigalio hirtulus (Erdős, 1954)

Material: 2♀♀, Iași, Iași Botanical Gardens, 30.VI.2011.

Quadrastichus anysis (Walker, 1839)

Material: 1♀, Iași, Iași Botanical Gardens, 30.VI.2011; 1♀ 1♂, Iași, Bârnova Forest, Poiana cu Schit Nature Reserve, 4.VII.2011.

Quadrastichus citrinus (Thomson, 1878)

Material: 4♀♀ 1♂, Iași, Iași Botanical Gardens, 30.VI.2011.

Quadrastichus praecox (Graham, 1961)

Material: 1♀, Iași, Breazu Mîrzești, 5.VII.2011.

Quadrastichus vacuna (Walker, 1839)

Material: 1♀, Iași, Iași Botanical Gardens, 30.VI.2011.

Quadrastichus ventricosus (Graham, 1961)

Material: 1♂, Suceava, nr Șaru Dornei, Neagra Șarului, 3.VII.2011.

Stepanovia aurantiacus (Ratzeburg, 1852)

Material: 1♀, Iași, Iași Botanical Gardens, 30.VI.2011; 4♀♀, Iași, Bârnova Forest, nr Slobozia, 4.VII.2011.

Sympiesis flavopicta Bouček, 1959

Material: 2♀♀ 1♂, Iași, Breazu Mîrzești, 5.VII.2011; 1♂, Iași, Bârnova Forest, nr Slobozia, 4.VII.2011.

Sympiesis notata (Zetterstedt, 1838)

Material: 1♀, Iași, Breazu Mîrzești, 5.VII.2011; 13♀♀ 4♂♂, Iași, Iași Botanical Gardens, 30.VI.2011; 1♀ 1♂, Iași, Bârnova Forest, nr Slobozia, 4.VII.2011; 2♀♀, Iași, Bârnova Forest, Poiana cu Schit Nature Reserve, 4.VII.2011.

Sympiesis xanthostoma (Nees, 1834)

Material: 1♀, Iași, Bârnova Forest, nr Slobozia, 4.VII.2011.

Tamarixia arboreae (Graham, 1979)

Material: 1♀, Suceava, Șaru Dornei, 3.VII.2011.

Tamarixia leptothrix Graham, 1991

Material: 1♀, Suceava, nr Șaru Dornei, Neagra Șarului, 3.VII.2011; 7♀♀, Suceava, Șaru Dornei, 3.VII.2011.

Tamarixia monesus (Walker, 1839)

Material: 3♀♀, Suceava, Șaru Dornei, 3.VII.2011; 4♀♀, Iași, Iași Botanical Gardens, 30.VI.2011.

Tamarixia pubescens (Nees, 1834)

Material: 1♀, Suceava, Șaru Dornei, 3.VII.2011.

Tamarixia upis (Walker, 1839)

Material: 2♀♀, Iași, Bârnova Forest, Poiana cu Schit Nature Reserve, 4.VII.2011.

Species already recorded from Romania

Achrysocharoides atys (Walker, 1839)

Material: 1♀ 3♂♂, Iași, Iași Botanical Gardens, 30.VI.2011; 5♂♂, Iași, Bârnova Forest, nr Slobozia, 4.VII.2011; 3♂♂, Iași, Bârnova Forest, Poiana cu Schit Nature Reserve, 4.VII.2011.

Achrysocharoides zwoelferi (Delucchi, 1954)

Material: 1♀, Suceava, Șaru Dornei, 3.VII.2011; 1♀, Iași, Bârnova Forest, nr Slobozia, 4.VII.2011.

Aprostocetus orithya (Walker, 1839)

Material: 2♀♀, Iași, Bârnova Forest, Poiana cu Schit Nature Reserve, 4.VII.2011.

Asecodes erxias (Walker, 1848)

Material: 9♀♀, Iași, Iași Botanical Gardens, 30.VI.2011; 1♀, Iași, Bârnova Forest, nr Slobozia, 4.VII.2011; 5♀♀, Iași, Bârnova Forest, Poiana cu Schit Nature Reserve, 4.VII.2011.

Chrysocharis nephereus (Walker, 1839)

Material: 2♀♀ 1♂, Suceava, Șaru Dornei, 3.VII.2011; 4♀♀, Iași, Iași Botanical Gardens, 30.VI.2011.

Chrysocharis pentheus (Walker, 1839)

Material: 5♀♀ 2♂♂, Iași, Iași Botanical Gardens, 30.VI.2011; 2♀♀ 1♂, Iași, Bârnova Forest, nr Slobozia, 4.VII.2011.

Cirrospilus diallus Walker, 1838

Material: 7♀♀, Suceava, Șaru Dornei, 3.VII.2011; 1♂, Iași, Bârnova Forest, nr Slobozia, 4.VII.2011.

Cirrospilus lyncus Walker, 1838

Material: 4♀♀, Iași, Iași Botanical Gardens, 30.VI.2011; 3♀♀, Iași, Bârnova Forest, nr Slobozia, 4.VII.2011; 3♀♀, Iași, Bârnova Forest, Poiana cu Schit Nature Reserve, 4.VII.2011.

Cirrospilus pictus (Nees, 1834)

Material: 1♀ Suceava, Șaru Dornei, 3.VII.2011; 1♀, Iași, Bârnova Forest, Poiana cu Schit Nature Reserve, 4.VII.2011.

Cirrospilus viticola (Rondani, 1877)

Material: 9♀♀, Iași, Bârnova Forest, nr Slobozia, 4.VII.2011.

Closterocerus lanassa (Walker, 1839)

Material: 1♀ 1♂, Iași, Iași Botanical Gardens, 30.VI.2011; 1♀ 3♂♂, Iași, Bârnova Forest, Poiana cu Schit Nature Reserve, 4.VII.2011.

Closterocerus trifasciatus Westwood, 1833

Material: 1♀, Iași, Breazu Mîrzești, 5.VII.2011; 3♀♀, Iași, Iași Botanical Gardens, 30.VI.2011; 3♀♀ 1♂, Iași, Bârnova Forest, nr Slobozia, 4.VII.2011; 2♀♀ 2♂♂, Iași, Bârnova Forest, Poiana cu Schit Nature Reserve, 4.VII.2011.

Diaulinopsis arenaria (Erdős, 1951)

Material: 16♀♀ 25♂♂, Iași, Breazu Mîrzești, 5.VII.2011; 3♀♀ 8♂♂, Iași, Iași Botanical Gardens, 30.VI.2011.

Diglyphus poppoea Walker, 1848

Material: 2♀♀, Iași, Iași Botanical Gardens, 30.VI.2011.

Diglyphus pusztensis (Erdős&Novicky, 1951)

Material: 3♀♀ 1♂, Iași, Iași Botanical Gardens, 30.VI.2011; 2♀♀, Iași, Bârnova Forest, nr Slobozia, 4.VII.2011.

Diglyphus sabulosus Erdős, 1951

Material: 1♀, Suceava, nr Șaru Dornei, Neagra Șarului, 3.VII.2011; 1♀ 1♂, Iași, Breazu Mîrzești, 5.VII.2011; 17♀♀ 2♂♂, Iași, Iași Botanical Gardens, 30.VI.2011.

Entedon crassiscapus Erdős, 1944

Material: 1♀, Iași, Bârnova Forest, nr Slobozia, 4.VII.2011.

Entedon diotimus Walker, 1839

Material: 2♀♀ 1♂, Suceava, Șaru Dornei, 3.VII.2011; 1♀ 1♂, Iași, Iași Botanical Gardens, 30.VI.2011; 1♀ 1♂, Iași, Bârnova Forest, Poiana cu Schit Nature Reserve, 4.VII.2011.

Euderus albitarsis (Zetterstedt, 1838)

Material: 1♀, Suceava, Șaru Dornei, 3.VII.2011; 1♀, Iași, Bârnova Forest, nr Slobozia, 4.VII.2011.

Eulophus larvarum (Linnaeus, 1758)

Material: 1♀, Suceava, Șaru Dornei, 3.VII.2011; 1♀, Iași, Iași Botanical Gardens, 30.VI.2011.

Necremnus folia (Walker, 1839)

Material: 1♂, Iași, Bârnova Forest, nr Slobozia, 4.VII.2011.

Neochrysocharis formosus (Westwood, 1833)

Material: 1♂, Suceava, nr Șaru Dornei, Neagra Șarului, 3.VII.2011; 16♀♀ 4♂♂, Iași, Breazu Mîrzești, 5.VII.2011; 18♀♀ 10♂♂, Iași, Iași Botanical Gardens, 30.VI.2011; 16♀♀ 7♂♂, Iași, Bârnova Forest, nr Slobozia, 4.VII.2011.

Oomyzus gallerucae (Fonscolombe, 1832)

Material: 1♂, Iași, Breazu Mîrzești, 5.VII.2011.

Pediobius saulius (Walker, 1839)

Material: 7♀♀ 6♂♂, Iași, Iași Botanical Gardens, 30.VI.2011; 2♂♂, Iași, Bârnova Forest, Poiana cu Schit Nature Reserve, 4.VII.2011.

Pnigalio agraulis (Walker, 1839)

Material: 1♀, Iași, Iași Botanical Gardens, 30.VI.2011.

Pnigalio pectinicornis (Linnaeus, 1758)

Material: 1♀, Iași, Bârnova Forest, Poiana cu Schit Nature Reserve, 4.VII.2011.

Pnigalio phragmitis (Erdős, 1954)

Material: 1♀, Iași, Breazu Mîrzești, 5.VII.2011.

Pnigalio soemius (Walker, 1839)

Material: 1♀, Suceava, Șaru Dornei, 3.VII.2011; 1♀ 4♂♂, Iași, Iași Botanical Gardens, 30.VI.2011.

Sympiesis acalle (Walker, 1848)

Material: 2♀♀, Iași, Bârnova Forest, nr Slobozia, 4.VII.2011.

Sympiesis sericeicornis (Nees, 1834)

Material: 1♀, Iași, Iași Botanical Gardens, 30.VI.2011; 5♀♀, Iași, Bârnova Forest, nr Slobozia, 4.VII.2011.

ACKNOWLEDGEMENTS

I am indebted to John Noyes (BMNH) for letting me work with the material included here, to Serguei Triapitsyn (University of California, Riverside) for the identification of the two *Entedonomphale* specimens; to Ovidiu Popovici for translating the abstract to Romanian and Mircea Mitroiu for checking the spelling of the Romanian localities (both at “Alexandru Ioan Cuza” University, Iași, Romania); and to an anonymous reviewer for valuable information that improved the manuscript.

REFERENCES

- ANDRIESCU, I. (1971) *Boucekastichus homocerus* nov.gen. nov.sp. un eulophide (Insecta, Hym. Chalcidoidea) nouveau de Roumanie. *Lucrările Stațiunii ‘Stejarul’ (Ecologie Terestră și Genetică)*, 4: 413–417. (in French)
- ANDRIESCU, I. (1974) Chalcidoidiens (Chalcidoidea, Hym., Insecta), d’importance économique de Roumanie (Catalogue hôte/parasite, parasite/hôte). *Lucrările Stațiunii ‘Stejarul’ (Ecologie Terestră și Genetică)*, 1972–73: 155–190. (in French)
- HANSSON, C. (1990) A taxonomic study on the Palearctic species of *Chrysonotomyia* Ashmead and *Neochrysocharis* Kurdjumov (Hymenoptera, Eulophidae). *Entomologica Scandinavica*, 20: 29–52.
- MOLDOVAN, O.T. (2007) Hymenoptera (excluding Pteromalidae, Ichneumonidae, Formicidae). Pp. 262–288. In O.T. Moldovan, M. Cimpean, D. Borda, S. Lepure, V. Ilie (eds.) *Lista faunistică a României (specii terestre și de apă dulce). Checklist of Romanian Fauna (terrestrial and freshwater species)*. Institutul de Speologie “Emil Racoviță”, Cluj, România (ISBN978–973–133–130–0). (in Romanian)
- NOYES, J.S. (1982) Collecting and preserving chalcidoid wasps. *Journal of Natural History*, 16: 315–334.
- NOYES, J.S. (2016) Universal Chalcidoidea Database. World Wide Web electronic publication. <http://www.nhm.ac.uk/chalcidoids>, accessed on 2016.01.
- PRICOP, E., G. CARDAȘ, C. CIORNEI, I. ANDRIESCU (2012) On the egg parasitoids of *Aproceros leucopoda* (Hymenoptera: Argidae), an invasive pest species from Japan. *ABAH Bioflux*, 4(2): 43–46.
- SUCIU, I.–H. (1980) Contributions à la connaissance de la famille de Eulophidae (Chalcidoidea). *Muzeul Județean Brașov, Studii și Cercetări, Științele Naturii, Cumidava*, 12(3): 189–190. (in French)