

Data on the Beetle Fauna (Insecta: Coleoptera) in “Frumoasa” Site of Community Importance (ROSCI0085, Romania) and Its Surroundings

Melania STAN^{1*}, Rodica SERAFIM¹, Sanda MAICAN²

¹“Grigore Antipa” National Museum of Natural History, Kiseleff 1, 011341 Bucharest, Romania.

²Institute of Biology Bucharest, 296 Splaiul Independenței, P.O. Box 56–53, 060031 Bucharest, Romania.

*corresponding author, e-mail: mstan@antipa.ro

Received: September 7, 2016; Accepted: November 11, 2016; Available online: December 21, 2016; Printed: December 30, 2016

Abstract. 222 coleopteran species and subspecies, belonging to 25 families, were found between 2014–2015 during faunal sampling in “Frumoasa” Site and its surroundings. Out of them, *Carabus variolosus* Fabricius, *Lucanus cervus* (Linnaeus), *Osmoderma eremita* (Scopoli), *Cerambyx cerdo* (Linnaeus), *Morimus funereus* Mulsant and *Rosalia alpina* (Linnaeus) are species of community importance, included in the Annex II of the Habitat Directive. In addition, several endemic or rare species/subspecies were collected: *Carabus gigas gigas* Creutzer, *C. planicollis planicollis* Küster, *C. obsoletus carpathicus* Palliardi, *Poecilus szeptigetii szeptigetii* (Csiki), *Pterostichus findelii* (Dejean) and *P. pilosus wellensii* (Drapiez).

Key words: Coleoptera, Natura 2000, ROSCI0085 “Frumoasa”, faunistics.

INTRODUCTION

ROSCI0085 “Frumoasa” was declared site of community importance (SCI) in 2007 and it is part of the European ecological network Natura 2000 in Romania. According to Natura 2000 Standard Form, the site is placed in the alpine bioregion, and covers 137.256 ha at an average of 1446 m a.s.l., on the territory of four counties: Alba, Hunedoara, Sibiu and Vâlcea. ROSCI “Frumoasa” includes ROSPA0043 and overlaps with several natural areas protected as nature reserves: Iezerul Șurianu, Luncile Prigoanei, Șuvara Sașilor, Iezerele Cindrelului, Cindrel, Jnepenișul Stricatul, Sterpu – Dealul Negru, Cristești, or as natural monuments: Masa Jidovului, Stâncă Grunzii, La Grumaji. The habitats of community importance are mainly represented by acidophilous forests of *Picea abies* (*Vaccinio-Piceetea*), Dacian forests of beech (*Symphyto-Fagion*), beech forests of the type *Luzulo-Fagetum* and mountain meadows and thickets with *Pinus mugo* and *Rhododendron myrtifolium*. For the designation of this area as SCI, the presence of mammal, reptile, amphibian, fish, invertebrate and plant species included in the Annex II of the Directive of the Council 92/43/CEE had also an important role.

“Grigore Antipa” National Museum of Natural History Bucharest was involved in the Project “Integrated management system of the sites ROSCI0085 “Frumoasa” and ROSPA0043 “Frumoasa”, making thus possible the observation and field evaluation of the conservation status of the characteristic habitats of invertebrates, birds and mammals mentioned in the Natura 2000 Standard Form and the observation, identification and evaluation of the conservation status of these species. Less time was allotted for the collection of other beetle species for new faunistic data.

The site includes places where beetle species have been reported in the past: Dobra, Oașa Lake, Tău Bistra, Tălmăciu, Tălmăcel, Lotrioara Valley, Păltiniș, Sadu,

Sadu Valley, Obârșia Lotrului, Lotru Valley, Voineasa, Cibin Mountains. In addition to the former records of Petri (1912, 1925–1926), Kuthy (1918), Kaszab (1940), Worell (1951), Panin & Săvulescu (1961), Ruicănescu & Patko (1995), Szél et al. (1995), Maican (2004), Serafim (1991, 2006, 2009, 2010), Serafim & Maican (2011), Stan (2010, 2012, 2013), Tăușan & Bucșa (2010), in this paper new collecting sites are also mentioned (Tab. 1).

MATERIAL AND METHODS

Specimens were collected during several field trips in 2014: 1–4.VII, 10–13.VII, 5–8.VIII, 15–21.VIII, 4–7.IX, 12–14.IX and in 2015: 19–22.V, 17–19.VI, 21–25.VII, 3–6.VIII, 11.VIII.

Different working methods were used in the field: observation/identification of the attacked old trees, checking of burrows and litter with the entomological rake, followed by direct sampling with the pooter and tweezers, checking of the piles of logs (beech, spruce) which were present in the established transects, collecting with entomological net and with soil traps, record of the observation points and geographical coordinates (Garmin eTrex 20), photography. In our field trips, pheromone traps placed in foresters were checked and some specimens/species were collected.

Table 1

The collecting sites in ROSCI0085 “Frumoasa” and its surroundings.

County	Locality	Collecting site	County	Locality	Collecting site
Alba	Dobra	Dobra Valley	Sibiu	Sadu	
Alba	Dobra	Fântânele Hill	Sibiu	Sadu – Râu Sadului	Sadu Valley
Alba	Dobra	Porumbelul Hill (Șugag stream)	Sibiu	Tâlmăciu	Dealul cu Pini
Alba	Dobra	Măgura Jinarilor	Sibiu	Tâlmăciu	Șuvara Sașilor Reserve
Alba	Șugag		Sibiu	Tâlmăcel	Luncșoara Valley
Alba	Tău Bistra	Bistra dam	Sibiu	Tâlmăcel	Râușor Valley
Alba	Tău Bistra	“Frumoasa” Valley (Sebeș Valley)	Sibiu	Tâlmăcel	Poteca Valley
Alba		Șureanu chalet	Vâlcea	Valea Măceșului	
Sibiu		Cibanului Valley, Ruginosu	Vâlcea	Valea Măceșului	Rudari Valley
Sibiu		Dobra Valley	Vâlcea	Valea Măceșului	Vătafu Valley
Sibiu		“Frumoasa” Valley (Sebeș Valley)	Vâlcea	Voineasa	Galbenu Hill
Sibiu	Boița	Megheș Valley	Vâlcea	Voineasa	Haneș Valley
Sibiu	Lotrioara	Lotrioara Valley	Vâlcea	Voineasa	Jidoaia Valley
Sibiu	Paltin	Paltin Valley	Vâlcea	Voineasa	Lotru Mts
Sibiu	Păltiniș		Vâlcea	Voineasa	Lotru Valley
Sibiu	Râu Sadului	Mancu Valley	Vâlcea	Voineasa	Obârșia Lotrului
Sibiu	Râu Sadului	Prejba Valley	Vâlcea	Voineasa	Turnurele Hill
Sibiu	Râu Sadului	Sădurel Valley	Vâlcea	Voineasa	Vidra Lake
Sibiu	Râu Sadului	Valea lui Ivan	Vâlcea	Voineasa	Voineșița Valley
Sibiu	Râu Sadului				

The beetle species are presented by families and subfamilies, in systematic order, according to the Catalogue of Palearctic Coleoptera (eds. Lobl & Smetana, 2003, 2004, 2006–2008, 2010, 2011). Within subfamilies, the genera and species/subspecies are presented in alphabetical order. For each species, the collecting site, date, geographical coordinates (mainly for Natura 2000 species), collectors and sex (where it was identified) are mentioned. The presentation of collecting sites is arranged by counties, in alphabetical order (Tab. 1). Part of collecting sites are presented in the Fig. 1.

For morphological details and photos of the aedeagi, the stereomicroscope Stemi 2000-C and the digital camera Nikon D700 with Nikon 105 mm F 2.8 lens were used.

The specimens are preserved in the Coleoptera Collection of “Grigore Antipa” National Museum of Natural History, Bucharest, Romania.

Abbreviations:

a.s.l. – above sea level; Mts – Mountains; specimen/s – spec./specs

Abbreviations for Museum team (legit/photographer/observer):

C.A. – Costică Adam; G.C. – Gabriel Chișamera; C.C. – Cristina Constantinescu; L.I. – Lavinia Iancu; E.I. – Elena Iorgu, I.Ș.I. – Ionuț Ștefan Iorgu; L.M. – Liviu Moscaliuc; D.M. – Dumitru Murariu; A.M.P. – Ana Maria Petrescu; D.S. – Dumitru Stan; M.S. – Melania Stan; Mi.S. – Mihai Stănescu.

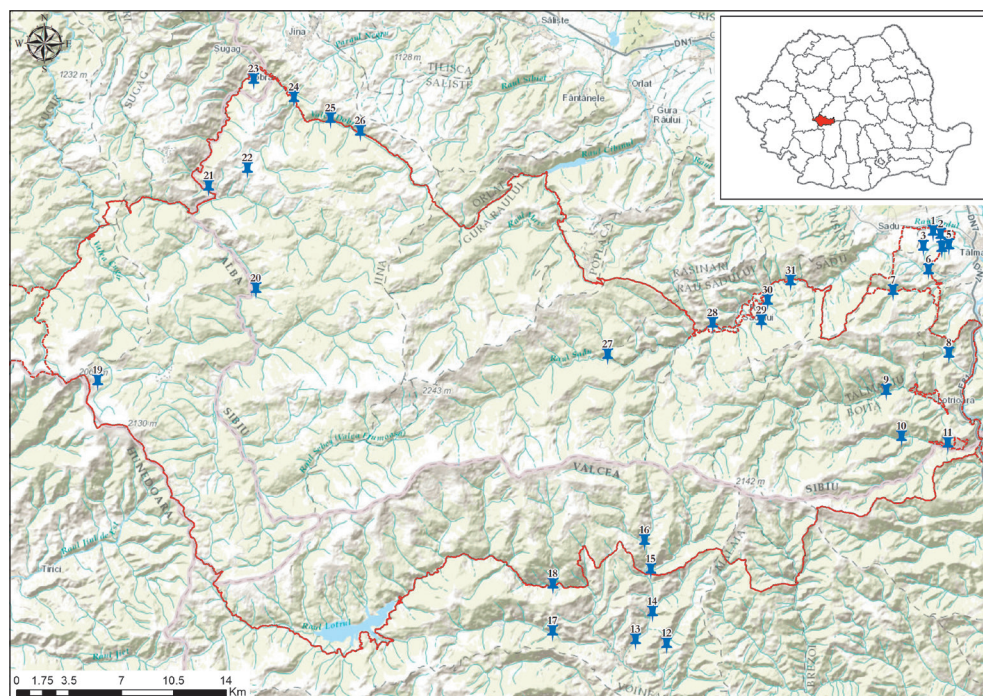


Fig. 1 – Collecting sites in ROSCI0085 “Frumoasa” and its surroundings: 1, 2, 3 – Șuvara Sașilor; 4, 5 – Dealul cu Pini; 6 – Râușor Valley; 7 – Poteca Valley; 8 – Megheș Valley; 9 – Lotrioara Valley; 10, 11 – Paltin Valley; 12 – Vătafu Valley; 13, 14, 15 – Voineșița Valley; 16 – Jidoaia Valley; 17 – between Voineasa-Vidra Lake; 18 – Lotru Valley; 19 – Șureanu chalet; 20 – “Frumoasa” Valley; 21 – Tău Bistra; 22 – Măgura Jinarilor; 23 – Fântânele Hill; 24, 25, 26 – Dobra Valley; 27 – Sădurel Valley; 28 – Valea lui Ivan; 29 – Mancu Valley; 30 – Prejba Valley; 31 – Sadu Valley.

RESULTS AND DISCUSSIONS

The paper presents 222 beetle species and subspecies which belong to 25 coleopteran families (Tab. 2).

The collected specimens were identified by Melania Stan (species which belong to the families: 1–6, 8, 9-pars, 10–14, 18–20, 23–25), by Rodica Serafim (species which belong to the families 7, 9-pars, 15–17, 21) and Sanda Maican (species which belong to the family 22).

Table 2

The Coleoptera families and the number of species which belong to each family.

Family	Number of species	Family	Number of species
1. Carabidae	39	14. Silvanidae	1
2. Silphidae	6	15. Endomychidae	1
3. Staphylinidae	18	16. Coccinellidae	8
4. Lucanidae	3	17. Melandryidae	2
5. Geotrupidae	2	18. Tenebrionidae	3
6. Scarabaeidae	15	19. Meloidae	1
7. Buprestidae	5	20. Pyrochroidae	1
8. Byrrhidae	3	21. Cerambycidae	59
9. Elateridae	8	22. Chrysomelidae	37
10. Lycidae	2	23. Anthribidae	1
11. Bostrichidae	1	24. Attelabidae	1
12. Trogossitidae	1	25. Curculionidae	1
13. Cleridae	3		

Family Carabidae Latreille, 1802

Subfamily Nebriinae Laporte, 1834

Nebria jockischii hoepfneri Dejean, 1826

1 ♀, Jidoaia Valley, 21.V.2015, L.M.

Notiophilus biguttatus (Fabricius, 1779)

1 spec., Sădurel Valley, 20.V.2015, M.S.

Subfamily Cicindelinae Latreille, 1802

Cicindela campestris campestris Linnaeus, 1758

2 ♂♂, 3 ♀♀, Dobra Valley, 3.VI.2015, leg. C.A.&G.C.; 1 ♂, Sădurel Valley, 20.V.2015, M.S.; 1 ♂, Poteca Valley, 45.63932°N, 24.17657°E, 841 m a.s.l., M.S.; 1 ♀, Voineșița Valley, 21.V.2015, Mi.S.

Cicindela sylvicola Dejean, 1822

1 ♂, 4 ♀♀, Jidoaia Valley, 21.V.2015, M.S.&L.M.

Subfamily Carabinae Latreille, 1802
Calosoma sycophanta Linnaeus, 1758

1 spec., Dobra Valley, 3.VI.2015, G.C.

Carabus auronitens escheri Palliardi, 1825

1 ♀, Sadu Valley, 20.V.2015, Mi.S.; 1 ♂, Sădurel Valley, 45.5965°N, 23.9472° E, 20.V.2015, L.M.; 1 ♂, Voineșița Valley, 21.V.2015, L.M.

Carabus cancellatus durus Reitter, 1896

1 ♀, Tău Bistra, 19.VI.2015, C.C.

Carabus cancellatus graniger Palliardi, 1825

1 ♂, Jidoaia Valley, 23.VII.2015, M.S.

Carabus convexus convexus Fabricius, 1775

1 ♀, Voineșița Valley, 21.V.2015, E.I.

Carabus coriaceus rugifer Kraatz, 1877

1 ♀, Râușor Valley, beech forest, 2.VII.2014, D.M.

Carabus gigas gigas Creutzer, 1799

Lotrioara Valley: 1 ♂, 1.VII.2014, M.S.; 1 ♀, 17.VIII.2014, C.C.

Carabus glabratus gibbosus Heyden, 1866

1 ♂, Sadu Valley, 20.V.2015, L.M.

Carabus granulatus granulatus Linnaeus, 1758

1 ♀, Sadu Valley, 20.V.2015, C.C.

Carabus intricatus intricatus Linnaeus, 1761

1 ♂, Tău Bistra, 4.VI.2015, G.C.; 1 ♀, Fântânele Hill, 18.VI.2015, L.M.

Carabus linnaei linnaei Panzer, 1812

1 ♂, Păltiniș, 3.VII.2014, E.I.

Carabus planicollis planicollis Küster, 1846 (Fig. 2 A)

1 ♀, Sadu Valley, 20.V.2015, C.C.; 1 ♀, Voineșița Valley, 21.V.2015, L.M.

Carabus obsoletus carpathicus Palliardi, 1825 (Fig. 2 B)

2 ♀♀, Sadu Valley, 20.V.2015, C.C.; 1 ♀, Haneș Valley, 22.V.2015, L.M.; 1 ♂, 1 ♀, Voineșița Valley, 21.V.2015, Mi.S.

Carabus variolosus variolosus Fabricius, 1787 (Fig. 2 C)

Dobra Valley: 1 spec., 45.73586°N, 23.70656°E, 842 m a.s.l., 22.VII.2015 and 1 spec., 45.72857°N, 23.73243°E, 842 m a.s.l., humid area along the edge of forest road, observed by Mi.S.&Ei.I.; Lotru Valley, 1 spec., 45.45758°N, 23.90008°E, 849 m a.s.l., 22.V.2015, 1 spec., 45.45809°N, 23.90296°E, 841 m a.s.l., 22.V.2015, observed by C.C.&Mi.S.; 1 ♂, 45.45832°N, 23.89775°E, 841 m a.s.l., observed by M.S.; Voineșița Valley: 1 spec., 45.46096°N, 23.98519°E, 820 m a.s.l., 1 spec., 45.44448°N, 23.98853°E, 700 m a.s.l.,

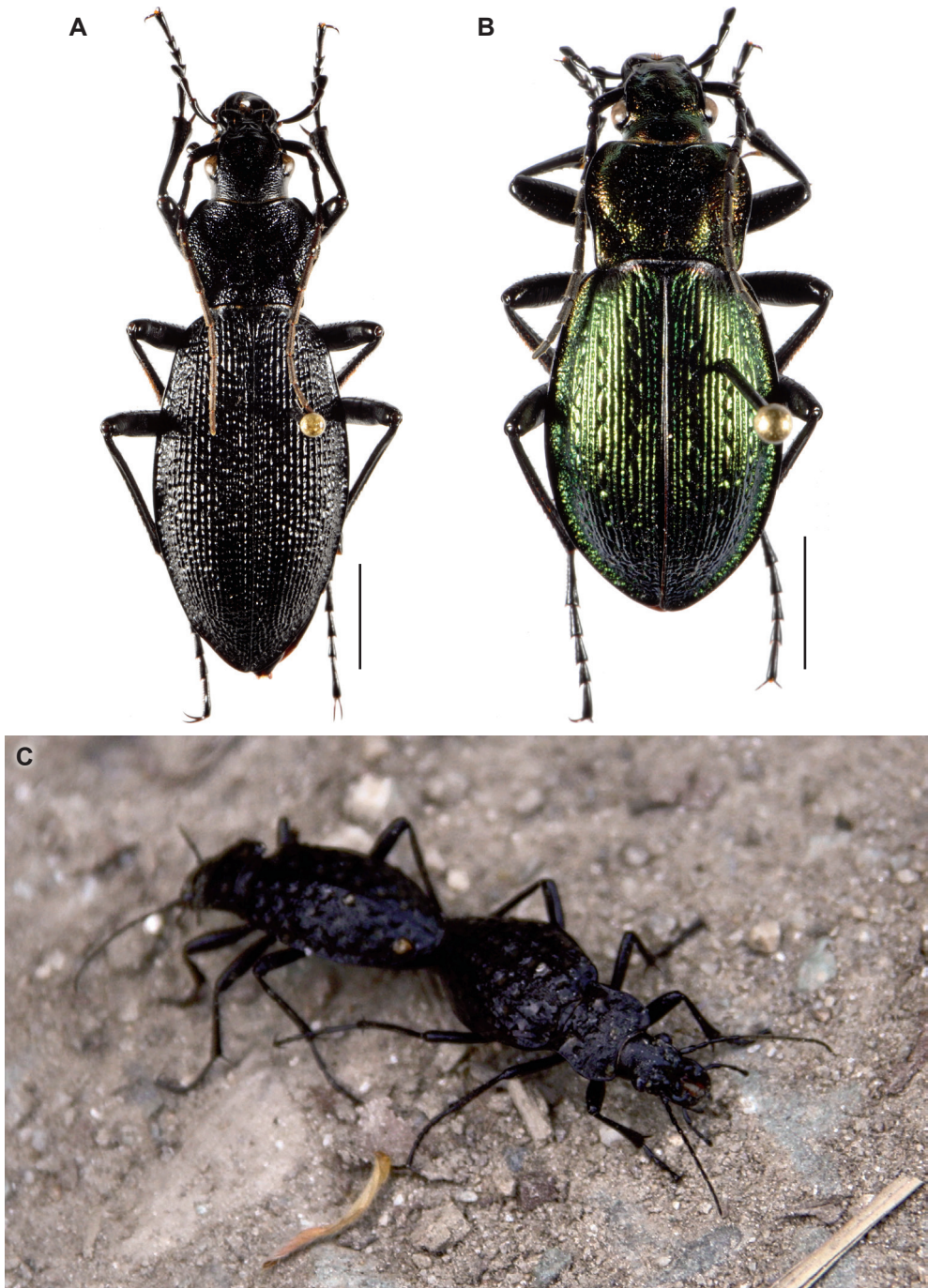


Fig. 2 – A, *Carabus planicollis planicollis* Kuster, ♀, Sadu Valley; B, *Carabus obsoletus carpathicus* Palliardi, ♀, Haneş Valley (photos: G. Năzăreanu); C, *Carabus variolosus variolosus* Fabricius, ♂, ♀, Voineşita Valley, 21.V.2015 (photo: E. Iorgu). Scale: 5 mm (A, B).

1 spec., 45.445076°N, 23.98905°E, 689 m a.s.l., 1 spec., 45.444792° N, 23.988793°E, 694 m a.s.l., 2 specs, 45.443446°N, 23.988759°E, 686 m a.s.l., 1 spec., 45.443011° N, 23.989037°E, 679 m a.s.l.; 2 specs, 45.44232°N, 23.988332°E, 683 m a.s.l., 2 specs, 45.442236° N, 23.98822°E, 685 m a.s.l., 2 specs, 45.441959°N, 23.988104°E, 682 m a.s.l., 1 spec., 45.4436°N, 23.98822°E, 704 m a.s.l., 21.V.2015, on the bank of a creek along the forest road, observed by Mi.S.&E.I.; 1 spec., 45.4514°N, 23.98982°E, 705 m a.s.l., 1 spec., 45.467731°N, 23.986259°E, 783 m a.s.l., 23.VII.2015, on the bank of a creek along the forest road, observed by Mi.S.&E.I.

Carabus violaceus wolffii Dejean, 1826

2 ♂♂, Sadu Valley, 20.V.2015, C.C.&E.I.

Cychrus caraboides (Linnaeus, 1758)

1 ♂, Dobra Valley, 3.VI.2015, C.A.; 1 ♀, “Frumoasa” Valley, 6.VIII.2014, D.S.; 1 ♀, Haneş Valley, 22.V.2015, E.I.

Subfamily Panagaeinae Bonelli, 1810

Panagaeus cruxmajor (Linnaeus, 1758)

1 spec., Voineşita Valley, 21.V.2015, E.I.

Subfamily Platyninae Bonelli, 1810

Agonum sexpunctatum (Linnaeus, 1758)

1 ♂, Sadu Valley, 20.V.2015, E.I.

Limodromus assimilis (Paykull, 1790)

1 spec., Dobra Valley, 3.VI.2015, C.A.; 1 spec., Tău Bistra, 4.VI.2015, G.C.; 1 spec., “Frumoasa” Valley, 6.VIII.2014, G.C.; 7 specs, Sadu Valley, 20.V.2015, L.M.&C.C.; 3 specs, Sădurel Valley, 45.5965°N, 23.9472°E, 20.V.2015, L.M.; Jidoaia Valley: 1 spec., 4.IX.2014, under log, M.S.; 2 specs, 21.V.2015, M.S.; 3 specs, Voineşita Valley, 21.V.2015, Mi.S.&E.I.

Subfamily Pterostichinae Bonelli, 1810

Abax parallelepipedus (Piller & Mitterpacher, 1783)

1 ♂, Tău Bistra, 7.VIII.2014, M.S.; 2 ♀♀, Lotrioara Valley, 17.VIII.2014, C.C.; 1 ♂, Râu Sadului, 20.V.2015, leg. M.S.

Amara curta Dejean, 1828

1 ♀, Sădurel Valley, 20.V.2015, M.S.; 1 ♀, Porumbelul Hill, on the stream bank, 22.VII.2015, M.S.

Molops piceus piceus (Panzer, 1793)

1 ♂, Sadu Valley, 20.V.2015, C.C.

Poecilus lepidus lepidus (Leske, 1785)

1 ♀, Sadu Valley, 20.V.2015, E.I.

Poecilus szepligetii szepligetii (Csiki, 1908) (Fig. 3 A)

1 ♂, Dobra Valley (Sibiu), 3.VI.2015, G.C.

Poecilus versicolor (Sturm, 1824)

1 ♀, Tău Bistra, 19.VI.2015, C.C.; 1 ♀, Voineșița Valley, 21.V.2015, E.I.

Pterostichus cursor (Dejean, 1828)

1 ♂, Dobra Valley (Sibiu), 3.VI.2015, C.A.

Pterostichus findelii (Dejean, 1828)

1 ♂, Sadu Valley, 20.V.2015, C.C.; 1 ♂, 1 ♀, Haneș Valley, 22.V.2015, M.S.

Pterostichus melanarius (Illiger, 1798)

2 ♀♀, “Frumoasa” Valley (Tău Bistra), 7.VIII.2014, M.S.; 1 ♂, 1 ♀, Lotrioara Valley, 18.VIII.2014, C.C.; 1 ♀, Jidoaia Valley, 21.V.2015, M.S.

Pterostichus oblongopunctatus oblongopunctatus (Fabricius, 1787)

1 ♀, Tău Bistra, 7.VIII.2014, M.S.; 1 ♀, Sadu Valley, 20.V.2015, C.C.; 1 ♀, Râu Sadului, 20.V.2015, L.M.; 1 ♀, Lotru Mts, around Balindru Lake, 5.IX.2014, under log, M.S.

Pterostichus nigrita (Paykull, 1790)

1 ♀, Sadu Valley, 20.V.2015, M.S.; 1 ♀, Lotrioara Valley, 17.VIII.2014, C.C.

Pterostichus pilosus wellensii (Drapiez, 1819) (Fig. 3 B)

3 ♂♂, 4 ♀♀, Sădurel Valley, 20.V.2015, C.C., E.I.&L.M.; 2 ♂♂, 2 ♀♀, Haneș Valley, 22.V.2015, M.S.&C.C.; 1 ♂, 1 ♀, Voineșița Valley, 21.V.2015, L.M.

Pterostichus rufitarsis (Dejean, 1828)

1 ♂, “Frumoasa” Valley, 6.VIII.2014, M.S.; 1 ♀, Haneș Valley, 22.V.2015, L.M.; 1 ♂, Voineșița Valley, 21.V.2015, L.M.

Subfamily Trechinae Bonelli, 1810

Bembidion tetracolum Say, 1823

1 ♂, Lotrioara Valley, 2.VII.2014, G.C.

Subfamily Harpalinae Bonelli, 1810

Harpalus affinis (Schrank, 1781)

1 spec., Sadu Valley, 20.V.2015, C.C.

Harpalus rufipes (DeGeer, 1774)

1 spec., Lotrioara Valley, 4.VII.2014, M.S.

Superfamily Staphylinoidea Latreille, 1802

Family Silphidae Latreille, 1807

Subfamily Silphinae Latreille, 1807

Oiceoptoma thoracicum (Linnaeus, 1758)

1 ♂, Dobra Valley, 3.VI.2015, C.A.; 1 ♀, Jidoaia Valley, 21.V.2015, M.S.

Phosphuga atrata atrata (Linnaeus, 1758)

Porumbelul Hill: 2 ♀♀, 1073 m a.s.l., 22.VII.2015, M.S.; 1 ♀, 11.VIII.2015, E.I.; 2 ♀♀, Sadu Valley, 20.V.2015, C.C. & E.I.; 2 ♀♀, Jidoaia Valley, 21.V.2015, M.S.; 1 ♀, Haneș Valley, 22.V.2015, C.C.; 1 ♀, Voineșița Valley, 21.V.2015, E.I.

Silpha carinata Herbst, 1783

1 ♀, Megheş Valley, 3.VIII.2015, M.S.; 1 ♂, Dealul cu Pini, 4.VIII.2015, M.S.

Silpha obscura obscura Linnaeus, 1758

1 ♂, Dobra Valley, 19.VI.2015, C.C.; 3 ♂♂, 1 ♀, Fântânele Hill, 18.VI.2015, C.C.; 1 ♀, Megheş Valley, 3.VIII.2015, M.S.; 1 ♂, Paltin Valley, 3.VIII.2015, M.S.; 1 ♂, Prejba Valley, 5.VIII.2015, C.C.; 1 ♂, Voineşti Valley, 21.V.2015, Mi.S.

Subfamily Nicrophorinae Kirby, 1837

Nicrophorus interruptus Stephens, 1830

1 ♂, Lotrioara Valley, beech forest, 5–17.VIII.2014, C.C.

Nicrophorus vespilloides Herbst, 1783

5 ♂♂, 2 ♀♀, Tău Bistra, 4.VI.2015, G.C.; 7 ♂♂, 8 ♀♀, Râu Sadului, 1300 m a.s.l., 1.VII.2014, C.A.; 1 ♂, 4 ♀♀, “Frumoasa” Valley, 6.VIII.2014, M.S.; 1 ♂, Jidoaia Valley, 21.V.2014, E.I.

Family Staphylinidae Latreille, 1802

Subfamily Tachyporinae MacLeay, 1825

Tachinus elongatus Gyllenhal, 1810

1 ♂, Râu Sadului, 20.V.2015, L.M.

Tachinus pallipes pallipes Gravenhorst, 1806

1 ♀, Voineşti Valley, 21.V.2015, E.I.

Subfamily Scaphidiinae Latreille, 1807

Scaphidium quadrimaculatum Olivier, 1790

1 spec., Râu Sadului, 20.V.2015, L.M.

Subfamily Steninae MacLeay, 1825

Stenus asphaltinus Erichson, 1840

2 ♀♀, Porumbelul Hill, 1073 m a.s.l., 22.VII.2015, M.S.

Stenus ater Mannerheim, 1830

1 ♂, Voineşti Valley, 21.V.2015, E.I.

Stenus comma comma LeConte, 1863

1 ♂, Sadu Valley, 20.V.2015, C.C.

Subfamily Paederinae Fleming, 1821

Paederidus rubrothoracicus Goeze, 1777

1 ♂, Vătafu Valley, 45.42331°N, 24.00061°E, 693 m a.s.l., 24.VII.2015, M.S.

Paederidus ruficollis (Fabricius, 1781)

2 ♂♂, 2 ♀♀, Vătafu Valley, 45.42331°N, 24.00061°E, 693 m a.s.l., 24.VII.2015, M.S.

Subfamily Staphylininae Latreille, 1802

Quedius fuliginosus (Gravenhorst, 1802)

1 ♀, Sadu Valley, 20.V.2015, C.C.

Quedius mesomelinus mesomelinus (Marsham, 1802)

1 ♂, Sadu Valley, 30.VI.2014, C.A.

Quedius nigriceps Kraatz, 1857

1 ♂, Sadu Valley, 20.V.2015, M.S.

Quedius scitus (Gravenhorst, 1806)

1 ♀, “Frumoasa” Valley, 6.VIII.2014, C.C.

Ocyopus biharicus J. Müller, 1926

2 ♂♂, 2 ♀♀, Lotrioara Valley, beech forest, 5–17.VIII.2014, C.C.; 1 ♀, Jidoaia Valley, under rotten log, 4.IX.2014, M.S.

Ocyopus ophthalmicus ophthalmicus (Scopoli, 1763)

1 ♂, “Frumoasa” Valley, 45.63289°N, 23.64512°E, 982 m a.s.l., 21.VII.2015, M.S.

Ocyopus ormayi (Reitter, 1887)

1 ♀, Jidoaia Valley, under rotten log, 45.48511°N, 23.98057°E, 1000 m a.s.l., 21.V.2015, M.S.

Platydracus fulvipes (Scopoli, 1763)

1 ♂, Voineșița Valley, 21.V.2015, E.I.

Platydracus latebricola (Gravenhorst, 1806)

1 ♂, Bistra dam, 19.VI.2015, E.I.

Staphylinus erythropterus Linnaeus, 1758

1 ♀, Dobra Valley, 3.VI.2015, G.C.

Superfamily Scarabaeoidea Latreille, 1802

Family Lucanidae Latreille, 1804

Subfamily Syndesinae MacLeay, 1819

Sinodendron cylindricum (Linnaeus, 1758)

Fântânele Hill: 1 ♂, 1 ♀, 18.VI.2015, L.M.; 1 ♂, 22.VII.2015, C.C.

Subfamily Lucaninae Latreille, 1804

Lucanus cervus cervus (Linnaeus, 1758)

Dealul cu Pini: exoskeleton remains belong to tens of specimens which were observed and photographed on 21st of August 2014 (45.664011°N, 24.228714° E, 509 m a.s.l.; 45.664622°N, 24.236456°E, 485 m a.s.l.; 45.663128°N, 24.232231°E, 538 m a.s.l.; 45.664657°N, 24.236452°E; 45.663173°N, 24.232272°E – oak grove), on 19th of May 2015 (45.66318°N, 24.2332°E; 45.6632°N, 24.23318°E – at the base of old oak with dried parts), on 17th of June 2015 (45.664996°N, 24.23858°E, 478 m a.s.l.; 45.664931°N, 24.239013°E – oak forest), on 4th of August 2015 (45.66472°N, 24.23823°E, 479 m a.s.l.; 45.66468°N, 24.23662°E; 45.66496°N, 24.23712°E – oak forest), 1 ♂, 45.665042°N, 24.238093°E, 484 m a.s.l., 17.VI.2015, observed by C.C.; 1 ♀ (dead specimen in the middle of the forestry road) Paltin Valley, 45.545633°N, 24.238817°E, 468 m a.s.l., 5.VIII.2014, observed by M.S.; Șuvara Sașilor Reserve: exoskeleton remains observed on 2nd of July 2014 (45.672256°N, 24.230792°E – oak grove), on 4th of August

2015 (45.66548°N, 24.21801°E; 45.66373° N, 24.21638°E; 45.66336°N, 24.21624°E; 45.66766°N, 24.21931° E; 45.66536°N, 24.2186°E – oak and beech forest).

Subfamily Dorcinae Parry, 1864

Dorcus parallelipedus (Linnaeus, 1758)

Dobra valley: 2 ♀♀, 18.VI.2015, E.I.; 1 ♂, 19.VI.2015, C.C.; 1 ♂, Porumbelul Hill, 1073 m a.s.l., 22.VII.2015, M.S.; 2 ♀♀, Fântânele Hill, 18.VI.2015, L.M.&C.C.; 1 ♀, Prejba Valley, 5.VIII.2015, C.C.; Sadu Valley: 2 ♂♂, 20.V.2015, E.I.; 1 ♂, 45.642° N, 24.103° E, 17.VI.2015, E.I.; 1 ♂, Voineșița Valley, 21.V.2015, Mi.S.

Family Geotrupidae Latreille, 1802

Anoplotrupes stercorosus (Scriba, 1791)

1 spec., Paltin Valley, 3.VIII.2015, M.S.

Geotrupes stercorarius (Linnaeus, 1758)

16 specs, Dobra Valley, 3.VI.2015, G.C.; 2 specs, Porumbelul Hill, 1073 m a.s.l., 22.VII.2015, M.S.; Fântânele Hill: 3 specs, 18.VI.2015, C.C.; 4 specs, 11.VIII.2015, C.C.&E.I.; 1 spec., Șureanu chalet, 45.57595°N, 23.51102°E, 1725 m a.s.l., 23.VII.2015, M.S.; Tău Bistra, 19.VI.2015, C.C.; 3 specs, Lotrioara Valley, 17.VIII.2014, C.C.; 3 specs, Păltiniș, pheromone traps in spruce forest – logging and plantation area brood, 3.VII.2014, M.S.; 1 spec., Prejba Valley, 5.VIII.2015, C.C.; Râușor Valley, 3.VII.2014, M.S.; 7 specs, Sadu Valley, 20.V.2015, C.C.&E.I.; 2 specs, Șuvara Sașilor Reserve, 19.V.2015, C.C.; 1 spec., Haneș Valley, 22.V.2015, C.C.; Jidoaia Valley: 1 spec., 21.V.2014, E.I.; 1 spec., 23.V.2015, C.C.

Family Scarabaeidae Latreille, 1802

Subfamily Aphodiinae Leach, 1815

Aphodius depressus (Kugelann, 1792)

1 spec., Dobra Valley, 3.VI.2015, C.A.; 3 specs, Păltiniș, pheromone traps in spruce forest – logging and plantation area brood, 3.VII.2014, Mi.S.

Subfamily Scarabaeinae Latreille, 1802

Onthophagus fracticornis Preyßler, 1790

1 ♂, Dobra Valley, 3.VI.2015, C.A.; 1 ♀, Șuvara Sașilor Reserve, 17.VI.2015, C.C.

Subfamily Melolonthinae Samouelle, 1819

Amphimallon assimile Herbst, 1790

2 specs, Sadu Valley, 45.642°N, 24.103°E, 17.VI.2015, E.I.

Melolontha melolontha (Linnaeus, 1758)

Dobra Valley: 5 ♂♂, 10 ♀♀, 3.VI.2015, C.A.&G.C.; 3 ♀♀, 18.VI.2015, E.I.; Porumbelul Hill: 2 ♂♂, 18.VI.2015, L.M.; 2 ♂♂ (dead specimens), 1073 m a.s.l., 22.VII.2015 – were observed hundreds dead specimens, M.S.; 1 ♂, Tău Bistra, 4.VI.2015, G.C.; 1 ♂, Sadu Valley, 20.V.2015, E.I.; 1 ♂, Jidoaia Valley, 21.V.2015, M.S.; 1 ♀ (dead specimen), Vătafu Valley, 24.VII.2015, E.I.

Subfamily Rutelinae MacLeay, 1819

Anisoplia bromicola (Germar, 1817)

1 ♂, 1 ♀, Fântânele Hill, 18.VI.2015, C.C.&L.M.; 1 ♀, Sadu Valley, 45.642°N, 24.103°E, 17.VI.2015, E.I.

Anomala dubia (Scopoli, 1763)

1 spec., Lotrioara Valley, 4.VII.2014, M.S.; 1 spec., Sadu Valley, 45.642°N, 24.103°E, 17.VI.2015, E.I.

Mimela aurata (Fabricius, 1801)

1 ♂, Dealul cu Pini, 4.VIII.2015, M.S.; 1 ♀, Lotrioara Valley, 17.VIII.2014, C.C.; 1 ♂, Poteca Valley, 6.VIII.2015, M.S.; 2 ♂♂, Prejba Valley, 5.VIII.2015, C.C.; 1 ♀, Râșor Valley, beech forest, 2.VII.2014, M.S.; 2 ♀♀, Jidoaia Valley, 23.VII.2015, M.S.; Vătafu Valley, 24.VII.2015, M.S.; 1 ♀, Voineșița Valley, 23.VII.2015, C.C.

Phyllopertha horticola (Linnaeus, 1758)

Dobra Valley, 45.748°N, 23.675°E, 632 m a.s.l., 18.VI.2015, Mi.S.; 20 ♂♂, 9 ♀♀, Fântânele Hill, 18.VI.2015, C.C.&L.M.&E.I.; 1 ♂, Tău Bistra, 19.VI.2015, C.C.; 1 ♀, Lotrioara Valley, 4.VII.2014, C.C.

Subfamily Dynastinae MacLeay, 1819

Pentodon idiota idiota (Herbst, 1789)

1 spec., Dobra Valley, 18.VI.2015, E.I.

Subfamily Cetoniinae Leach, 1815

Cetonia aurata aurata (Linnaeus, 1761)

Dobra Valley: 5 ♂♂, 5 ♀♀, 18.VI.2015, E.I.; 2 ♀♀, 19.VI.2015, C.C.; 1 ♀, Porumbelul Hill, 1073 m a.s.l., 22.VII.2015, M.S.; Fântânele Hill: 1 ♂, 2 ♀♀, 18.VI.2015, L.M.; 4 ♂♂, 1 ♀, 10.VIII.2015, C.C.; 1 ♀, Șugag, 2.V.2015, E.I.; 2 ♂♂, Tău Bistra, 19.VI.2015, C.C.; Lotrioara Valley: 1 ♀, 1.VII.2014, M.S.; 2 ♀♀, 4.VII.2014, C.C.; 2 ♂♂, Paltin Valley, 3.VIII.2015, M.S.; 2 ♀♀, Prejba Valley, 5.VIII.2015, C.C.; 1 ♀, Sadu Valley, 20.V.2015, E.I.; Șuvara Sașilor Reserve: 1 ♀, 19.V.2015, C.C.; 1 ♂, 25.VII.2015, M.S.; 1 ♂, 2 ♀♀, 27.VII.2015, C.C.; 3 ♂♂, Voineșița Valley, 23.VII.2015, E.I.

Gnorimus nobilis nobilis (Linnaeus, 1758)

4 specs, Bistra dam, 19.VI.2015, E.I.&C.C.; Dobra Valley: 6 specs, 45.748°N, 23.675°E, 632 m a.s.l., 18.VI.2015, Mi.S.&E.I.; 2 specs, 22.VII.2015, E.I.; 6 specs, Fântânele Hill, 18.VI.2015, L.M.; 1 spec., Paltin Valley, 3.VIII.2015, M.S.; 1 spec., Prejba Valley, 5.VIII.2015, C.C.; 1 spec., Râșor Valley, beech forest, on vegetation at roadside forest, 3.VII.2014, M.S.; 1 spec., Valea lui Ivan, 5.VIII.2015, M.S.; 11 specs, Rudari Valley, 24.VII.2015, M.S.&C.C.; 1 spec., Vătafu Valley, 24.VII.2015, C.C.; 3 specs, Voineșița Valley, 23.VII.2015, E.I.

Osmoderma eremita (Scopoli, 1763) (Fig. 3 C)

Remarks: Taxonomists's opinions differ about the forms of *Osmoderma* in Europe. The authors used the name *Osmoderma eremita* (Scop.) because the species is mentioned under this name on the invertebrate list of Natura 2000 species in Romania.

1 spec., Galbenu Hill, 45.47123°N, 23.99059°E, 930 m a.s.l., 6.IX.2014, on the dried beech, standing in forest, with humus and emergence holes, was observed and took

photos by M.S., C.C., Mi.S., L.I.&AM.P. (Fig. 3 C); 1 ♀, Fântânele Hill, 45.75899°N, 23.64056°E, 766 m a.s.l., 22.07.2015, oak trunk, standing at the edge forest, was observed and took photos by L.M., C.C., M.S., Mi.S.&E.I.

Oxythyrea funesta (Poda von Neuhaus, 1761)

3 specs, Șugag, 2.V.2015, E.I.; 1 spec., Șuvara Sașilor Reserve, 2.VII.2014, M.S.

Protaetia marmorata marmorata (Fabricius, 1792)

1 ♀, Lotrioara Valley, 1.VII.2014, M.S.; 1 ♂, Prejba Valley, 5.VIII.2015, C.C.

Trichius fasciatus (Linnaeus, 1758)

Dobra Valley: 1 spec., 18.VI.2015, E.I.; 1 spec., 22.VII.2015, E.I.; Tău Bistra: 1 spec., 7.VIII.2014, M.S.; 6 specs, 19.VI.2015, C.C.&E.I.; 2 specs, Lotrioara Valley, 4.VII.2014, C.C.; 1 spec., Paltin Valley, 3.VIII.2015, C.C.; 1 spec., Prejba Valley, 5.VIII.2015, C.C.; 2 specs, Sadu Valley, 45.642°N, 24.103°E, 17.VI.2015, Mi.S.; 1 spec., Obârșia Lotrului, 7A road, 2.V.2015, E.I.; 1 spec., Rudari Valley, 24.VII.2015, C.C.; 1 spec., Voinești Valley, 45.4939°N, 24.02112°E, 23.VII.2015, E.I.

Superfamily Buprestoidea Leach, 1815

Family Buprestidae Leach, 1815

Subfamily Buprestinae Leach, 1815

Anthaxia quadripunctata (Linnaeus, 1758)

1 spec., Dobra Valley, 19.VI. – 22.VII.2015, C.C.; 1 spec., “Frumoasa” Valley, 6.VIII.2014, M.S.; 1 spec., Lotrioara Valley, 4.VII.2014, M.S.; 8 specs, Sadu Valley, 20.V.2015, M.S.&C.C.; 1 spec., Vătafu Valley, 24.VII.2015, M.S.; 1 spec., Voineasa, 21.VII.2015, M.S.

Buprestis haemorrhoidalis Herbst, 1780

1 spec., Lotrioara Valley, 25.VII.2015, M.S.

Buprestis rustica Linnaeus, 1758

2 specs, “Frumoasa” Valley, 6.VIII.2014, C.C.

Chrysobothris affinis affinis (Fabricius, 1794)

Lotrioara Valley: 3 specs, 2.VII.2014; 6 specs, 13.VII.2014, G.C.&C.C.; 4 specs, 5.VIII.2015, M.S.

Phaenops cyanea (Fabricius, 1775)

1 spec., Lotrioara Valley, 5.VIII.2014, M.S.

Superfamily Byrrhoidea Latreille, 1804

Family Byrrhidae Latreille, 1804

Subfamily Birrhinae Latreille, 1804

Byrrhus glabratus Heer, 1841

1 ♂, Dobra Valley, 3.VI.2015, C.A.; 2 ♀♀, Sadu Valley, 20.V.2015, L.M.; 1 ♀, Haneș Valley, 22.V.2015, L.M.

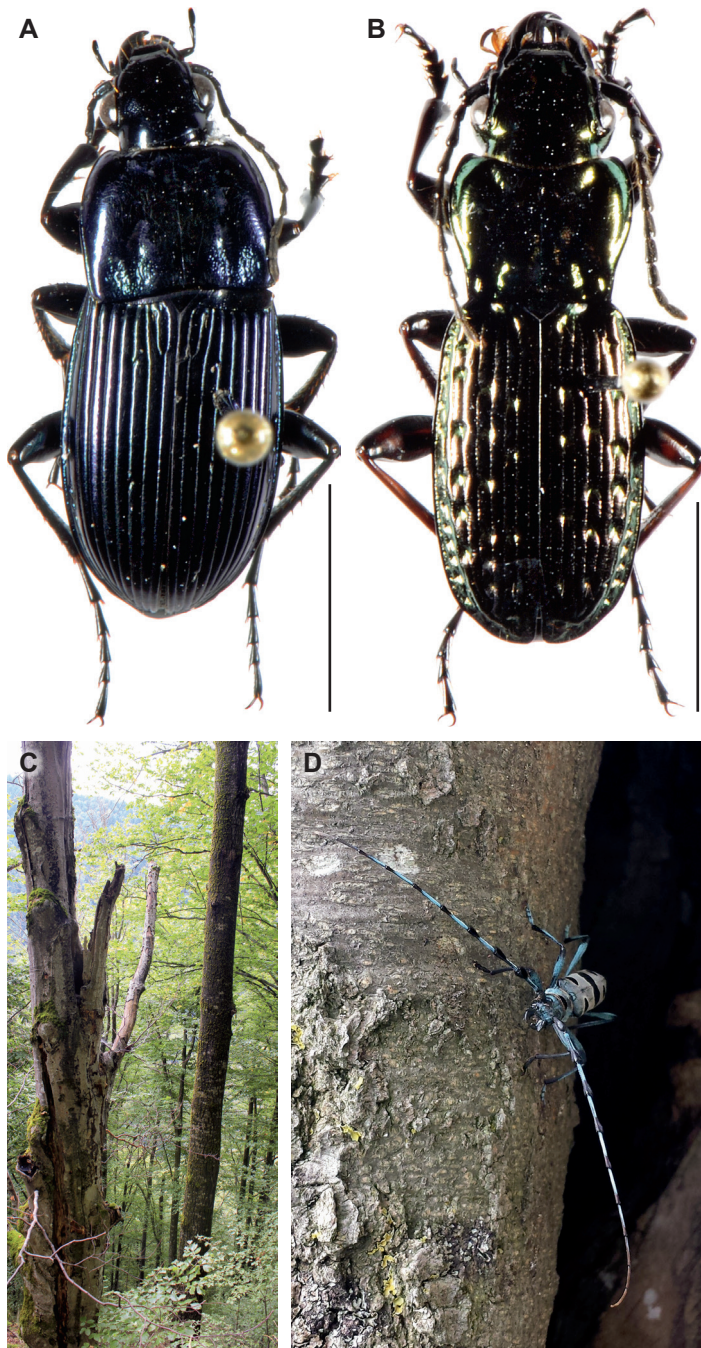


Fig. 3 – A, *Poecilus szepligetii szepligetii* (Csiki), ♂, Dobra Valley; B, *Pterostichus pilosus wellensii* (Drapiez), ♂, Voinești Valley (photos: G. Năzăreanu); C, beech tree with *Osmoderma eremita* (Scopoli), Galbenu Hill; D, *Rosalia alpina alpina* (Linnaeus), Măgura Jinarilor (photos: M. Stan).
Scale: 5 mm (A, B).

Byrrhus pilula pilula (Linnaeus, 1758)

1 ♂, Dobra Valley, 3.VI.2015, L.M.; 1 ♂, Haneş Valley, 22.V.2015, L.M.; 1 ♀, Jidoaia Valley, 21.V.2015, M.S.; Voineşita Valley, 23.VII.2015, leg. E.I.

Byrrhus pustulatus pustulatus (Foster, 1771)

2 ♀♀, Sadu Valley, 20.V.2015, C.C.&Mi.S.

Superfamily Elateroidea Leach, 1815

Family Elateridae Leach, 1815

Subfamily Agrypninae Candèze, 1857

Agrypnus murinus (Linnaeus, 1758)

1 spec., Fântânele Hill, 18.VI.2015, L.M.; 1 spec., Tău Bistra, 19.VI.2015, C.C.; 1 spec., Sădurel Valley, 45.5965° N, 23.9472° E, 20.V.2015, M.S.; 2 specs, Voineşita Valley, 21.V.2015, Mi.S.&E.I.

Danosoma fasciatum (Linnaeus, 1758)

1 spec., Păltiniş, 3.VII.2014, M.S.; 1 spec., Râul Sadului, 1300 m a.s.l., 1.VII.2014, C.A.

Subfamily Dendrometrinae Gistel, 1848

Anostirus castaneus (Linnaeus, 1758)

1 spec., "Frumoasa" Valley, 45.63289° N, 23.64512° E, 982 m a.s.l., 21.VII.2015, M.S.

Ctenicera cuprea (Fabricius, 1775) (Fig. 4 A, B)

46 specs, Tău Bistra, 4.VI.2015, G.C.; 18 specs, Cibanu Valley, Ruginosu, 4.VI.2015, C.A.; 3 specs, Păltiniş, pheromone traps in spruce forest – logging and plantation area brood, 3.VII.2014, M.S.&E.I.; 3 specs, Haneş Valley, 22.V.2015, E.I.&C.C.

Ctenicera heyeri (Saxesen, 1838) (Fig. 4 C, D)

1 spec., Dobra Valley, 3.VI.2015, G.C.; 3 specs, Cibanu Valley, Ruginosu, 4.VI.2015, C.A.; 1 spec., "Frumoasa" Valley, 6.VIII.2014, C.C.; 3 specs Râul Sadului, Sadu Valley, 20.V.2015, M.S. & E.I.; 8 specs, Jidoaia Valley, 21.V.2015, E.I.; 2 specs, Voineşita Valley, 21.V.2015, E.I.&L.M.

Ctenicera pectinicornis (Linnaeus, 1758)

1 spec., Tău Bistra, 19.VI.2015, C.C.; 3 specs, Râul Sadului, Sadu Valley, 20.V.2015, M.S.&C.C.

Ctenicera virens (Schrank, 1781)

1 spec., Dobra Valley, 45.748° N, 23.675° E, 632 m a.s.l.; 18.VI.2015, Mi.S.; 1 spec., Fântânele Hill, 22.VII.2015, M.S.&E.I.; 6 specs, Sădurel Valley, 45.5965° N, 23.9472° E, 20.V.2015, Mi.S., M.S., C.C. & E.I.; 8 specs, Jidoaia Valley, 21.V.2015, M.S.

Selatosomus aeneus (Linnaeus, 1758)

2 specs, Sebeş Valley, 13.VII.2014, C.C.; 1 spec. Şureanu Chalet, 45.57595° N, 23.51102° E, 1725 m a.s.l., 22.VII.2015, M.S.; 1 spec., Tău Bistra, 4.VI.2015, C.A.; 1 spec., Jidoaia Valley, 21.V.2015, C.C.

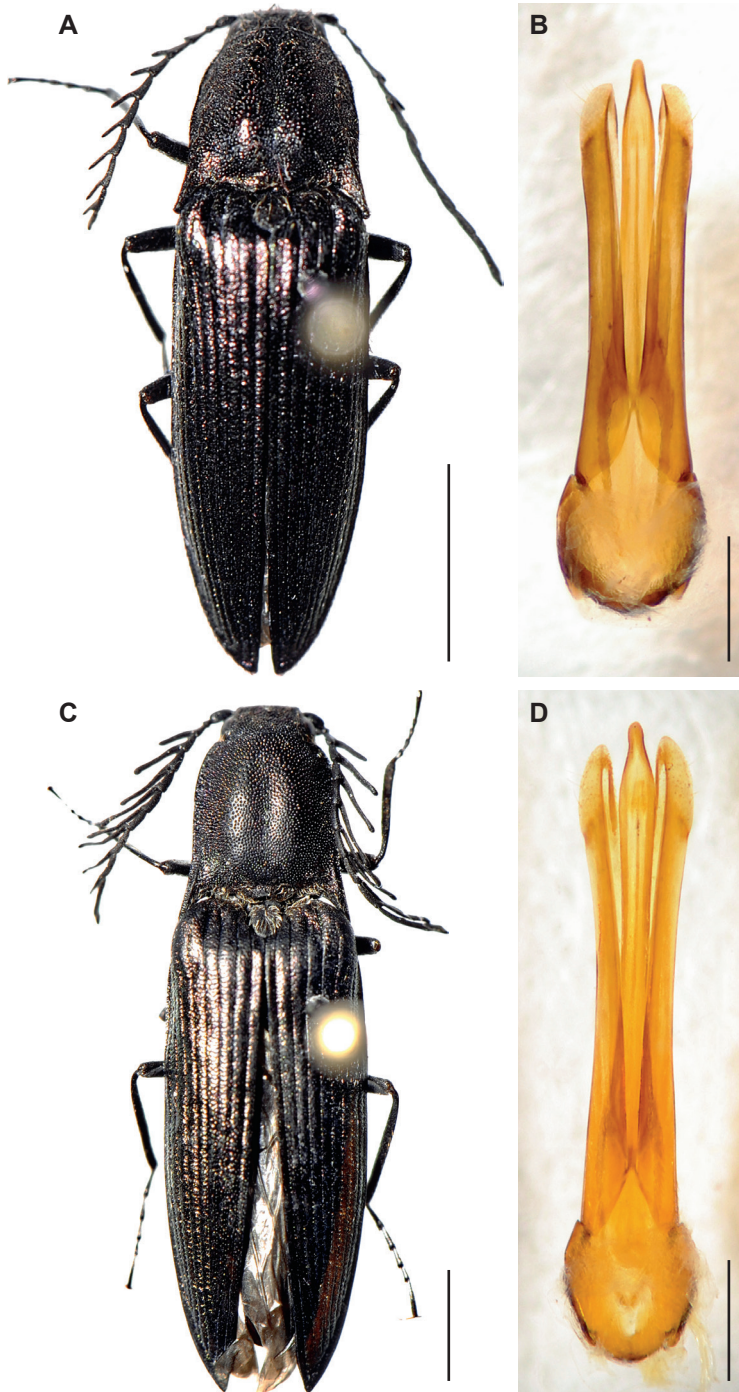


Fig. 4 – A, B, *Ctenicera cuprea* (Fabricius) (A, habitus, ♂; B, aedeagus); C, D, *Ctenicera heyeri* (Saxesen) (C, habitus, ♂; D, aedeagus) (photos: G. Năzăreanu). Scale: 2.5 mm (A, C), 1 mm (B, D).

Family Lycidae Laporte, 1836
 Subfamily Erotinae LeConte, 1881
Dictyoptera aurora (Herbst, 1784)

1 spec., Sădurel Valley, 20.V.2015, E.I.; 1 spec., Sadu Valley, 20.V.2015, M.S.

Subfamily Metriorrhynchinae Kleine, 19226
Lygisterus sanguineus sanguineus (Linnaeus, 1758)

2 specs, Fântânele Hill, 18.VI.2015, L.M.; 2 specs, Rudari Valley, 24.VII.2015, C.C.

Superfamily Bostrichoidea Latreille, 1802
 Family Bostrichidae Latreille, 1802
 Subfamily Bostrichinae Latreille, 1802
Bostrichus capucinus (Linnaeus, 1758)

1 spec., Sadu Valley, 20.V.2015, E.I.

Superfamily Cleroidea Latreille, 1802
 Family Trogossitidae Latreille, 1802
 Subfamily Peltinae Kirby, 1837
Peltis grossa (Linnaeus, 1758)

1 spec., Lotrioara Valley, 4.VII.2014, on flowers at roadside forest, M.S.; Voineșița Valley, 21.V.2015, Mi.S.

Family Cleridae Latreille, 1802
 Subfamily Clerinae Latreille, 1802
Clerus mutillarius mutillarius Fabricius, 1775

1 spec., Fântânele Hill, 18.VI.2015, C.C.

Thanasimus formicarius formicarius (Linnaeus, 1758)

1 spec., Dobra valley, 19.VI.2015, C.C.; 1 spec., Fântânele Hill, 18.VI.2015, L.M., 8 specs, Păltiniș, pheromone traps in spruce forest – logging and plantation area brood, 3.VII.2014, M.S.; 1 spec., Râu Sadului, 20.V.2015, M.S.; 2 specs, Sădurel Valley, 45.5965°N, 23.9472°E, 20.V.2015, L.M.; 1 spec., Haneș Valley, 22.V.2015, C.C.

Trichodes apiarius (Linnaeus, 1758)

2 specs, Bistra dam, 19.06.2015, E.I.; 1 spec., Fântânele Hill, 22.VII.2015, M.S.; 1 spec., Tău Bistra, 19.VI.2015, C.C.; 4 specs, Lotrioara Valley, 4.VII.2014, M.S.; 1 spec., Paltin Valley, 3.VIII.2015, M.S.; 3 specs, Sadu Valley, 45.642°N, 24.103°E, 17.VI.2015, M.S.; 1 spec., Șuvara Sașilor Reserve, 2.VII.2014, M.S.; 1 spec., Voineșița Valley, 23.VII.2015, E.I.

Superfamily Cucujoidea Latreille, 1802
 Family Silvanidae Kirby, 1837
 Subfamily Brontinae Erichson, 1845
Uleiota planatus (Linnaeus, 1761)

2 specs, Fântânele Hill, 18.VI.2015, L.M.

Family Endomychidae Leach, 1815

Subfamily Endomychinae Leach, 1815

Endomychus thoracicus Charpentier, 1825

1 spec., Fântânele Hill, 18.VI.2015, C.C.; 3 specs, "Frumoasa" Valley, 1700 m a.s.l., in rotten spruce trunk, on meadow, 6.VIII.2014, M.S.; 3 specs, Lotrului Mts, 980 m a.s.l., in rotten beech trunk, beech forest, 6.IX.2014, M.S.

Family Coccinellidae Latreille, 1807

Subfamily Coccinellinae Latreille, 1807

Anatis ocellata (Linnaeus, 1758)

1 spec., Sădurel Valley, 45.5965° N, 23.9472° E, 20.V.2015, M.S.; 1 spec., Jidoaia Valley, 23.VII.2015, M.S.

Calvia quatuordecimguttata (Linnaeus, 1758)

1 spec., Sădurel Valley, 45.5965° N, 23.9472° E, 20.V.2015, leg. E.I.; 1 spec., Vătafu Valley, 24.VII.2015, M.S.

Coccinella quinquepunctata (Linnaeus, 1758)

1 spec., Tău Bistra, Sebeş Valley, 11.VII.2014, C.C.

Coccinella septempunctata (Linnaeus, 1758)

1 spec., Râuşor Valley, 45.628892° N, 24.212142° E, 840 m, 1.VII.2014, C.C.; 1 spec., Tău Bistra, Sebeş Valley, 11.VII.2014, C.C.

Harmonia axyridis (Pallas, 1773)

6 specs, Dobra Valley, 3.VI.2015, Leg. G.C. & C.A.; 1 spec., Fântânele Hill, 22.VII.2015, M.S.; 1 spec., Tău Bistra, Sebeş Valley, 11.VII.2014, C.C.; 3 specs, 1 spec., Lotrioara Valley, 1.VII.2014, C.C., E.I.; 15 specs, Râuşor Valley, 45.628892° N, 24.212142° E, 840 m, 1.VII.2014, M.S., E.I.; 1 spec., Sădurel Valley, 45.5965° N, 23.9472° E, 20.V.2015, leg. C.C.; 1 spec., Vătafu Valley 24.VII.2015, M.S.&C.C.

Hippodamia notata (Laicharting, 1781)

1 spec., Sădurel Valley, 45.5965° N, 23.9472° E, 20.V.2015, M.S.; 2 specs, Haneş Valley, 22.V.2015, E.I.

Propylea quatuordecimpunctata (Linnaeus, 1758)

1 spec., Râuşor Valley, 45.628892° N, 24.212142° E, 840 m, 1.VII.2014, C.C.

Halyzia sedecimguttata (Linnaeus, 1758)

1 spec., Fântânele Hill, 22.VII.2015, M.S.; 1 spec., Jidoaia Valley, 23.VII.2015, M.S.

Superfamily Tenebrionoidea Latreille, 1802

Family Melandryidae Leach, 1815

Melandrya caraboides (Linnaeus, 1761)

1 spec., Sadu Valley, 20.V.2015, C.C.

Melandrya dubia (Schaller, 1783)

1 spec., Voineşti Valley, 21.V.2015, Mi.S.

Family Tenebrionidae Latreille, 1802

Subfamily Diaperinae Latreille, 1802

Neomida haemorrhoidalis Fabricius, 1787

1 ♂, Lotrioara Valley, 4.VII.2014, on flowers at the roadside forest, M.S.

Uloma rufa Piller & Mitterpacher, 1783

1 spec., Dealul cu Pini, 4.VIII.2015, M.S.

Subfamily Stenochiinae Kirby, 1837

Menephilus cylindricus cylindricus (Herbst, 1784)

5 ♂♂, 1 ♀, Dealul cu Pini, 45.66549°N, 24.23850°E, 484 m a.s.l., in dried pine stub, 4.VIII.2015, M.S.&C.C.

Family Meloidae Gyllenhal, 1810

Subfamily Meloinae Gyllenhal, 1810

Meloe violaceus Marsham, 1802

1 ♂, Sadu Valley, 20.V.2015, C.C.

Family Pyrochroidae Latreille, 1807

Subfamily Pyrochroinae Latreille, 1807

Pyrochroa coccinea Linnaeus, 1760

3 ♂♂, Fântânele Hill, 18.VI.2015, L.M.; 1 ♂, Sadu Valley, 20.V.2015, E.I.

Superfamily Chrysomeloidea Latreille, 1802

Family Cerambycidae Latreille, 1802

Subfamily Prioninae Latreille, 1802

Prionus coriarius (Linnaeus, 1758)

1 spec. Fântânele Hill, 18.VI.2015, C.C.; 1 spec., Megheş Valley, 45.59959°N, 24.23902°E, 479 a.s.l., 3.VIII.2015, M.S.; 2 specs, Poteca Valley, 45.63932°N, 24.17657°E, 6.VIII.2015, M.S., C.C.; 1 spec., Lotru Mts, 7.IX.2014, M.S.

Subfamily Lepturinae Latreille, 1802

Alosterna tabacicolor (De Geer, 1775)

1 spec., Fântânele Hill, 18.VI.2015, L.M.; 1 spec., Sadu Valley, 45.642°N, 24.103°E, 17.VI.2015, Mi.S.

Anastrangalia dubia (Scopoli, 1763)

3 specs, Fântânele Hill, 18.VI.2015, L.M.; 2 specs, Obârşia Lotrului, 2.V.2015, E.I.; 2 specs, Voineşti Valley, 23.VII.2015, E.I.

Anastrangalia sanguinolenta (Linnaeus, 1761)

1 spec., Tău Bistra, 19.VI.2015, C.C.

Anoplodera sexguttata (Fabricius, 1775)

1 spec., Dobra Valley, 45.748°N, 23.675°E, 632 m a.s.l., 18.VI.2015, Mi.S.

Leptura annularis annularis Fabricius, 1801

1 spec., Dobra Valley, 45.748°N, E: 23.675°N, 632 m a.s.l., 18.VI.2015, E.I.; 6 specs, Tău Bistra, 19.VI.2015, C.C., E.I.; 1 spec., Lotrioara Valley, 1.VII.2014, M.S.; 1 spec., Voineșita Valley, 45.42540°N, 23.97405°E, 613 m a.s.l., 23.VII.2015, E.I.

Leptura aurulenta Fabricius, 1792

1 spec., Sadu Valley, 7.VII.2014, C.C.

Leptura quadrifasciata quadrifasciata Linnaeus, 1758

1 spec., Dobra Valley, 16.VIII.2014, C.A.; Tău Bistra: 1 spec., 19.VI.2015, E.I.; 1 spec., 11.VIII.2015, C.C.; 1 spec., Râușor Valley, 45.628892°N, 24.212142°E, 840 m, 1.VII.2014, E.I.; 2 specs, Șuvara Sașilor Reserve, 21.VIII.2014, C.C.; 1 spec., Sadu Valley, 12.IX.2014, L.M.; 1 spec. Obârșia Lotrului, 2.V.2015, E.I.; 1 spec., Vătafu Valley, 24.VII.2015, C.C.; 1 spec., Voineșita Valley, 45.42540°N, 23.97405°E, 613 m a.s.l., 23.VII.2015, E.I.

Lepturobosca virens (Linnaeus, 1758)

12 specs, "Frumoasa" Valley, 6.VIII.2014, M.S., C.C.; 1 spec., Voineșita Valley, 45.42540°N, 23.97405°E, 613 m a.s.l., 23.VII.2015, E.I.

Pachytodes cerambyciiformis (Schrank, 1781)

2 specs, Fântânele Hill, 18.VI.2015, L.M.; 3 specs, Tău Bistra, 19.VI.2015, C.C.; Tău Bistra, Sebeș Valley: 1 spec, 11.VII.2015, M.S.; 1 spec., 21.VII.2015, E.I.; Lotrioara Valley: 4 specs, 1.VII.2014, M.S.; 8 specs, 4.VII.2014, C.C., E.I.; 2 specs, 25.VII.2015, E.I.; 1 spec., Paltin Valley, 45.54921°N, 24.19927°E, 656 m a.s.l., 3.VIII.2015, C.C.; 2 specs, Râușor Valley, 45.628892°N, 24.212142°E, 840 m a.s.l., 1.VII.2014; 1 spec., 3.VII.2014, E.I., C.C.; 3 specs, Jidoaia Valley, 23.VII.2015, M.S.&C.C.; 2 specs, Rudari Valley, 24.VII.2015, C.C.; 3 specs, Voineșita Valley, 45.42540°N, 23.97405°E, 613 m a.s.l., 23.VII.2015, E.I.

Pachytodes erraticus erraticus (Dalman, 1817)

3 specs, Șuvara Sașilor Reserve, 2.VII.2014, E.I., 17.VI.2015, C.C., 25.VII.2015, M.S.

Pseudovadonia livida livida (Fabricius, 1776)

1 spec., Tău Bistra, Sebeș Valley, 11.VII.2014, C.C.; 1 spec., Lotrioara Valley, 1.VII.2014, M.S.; 1 spec., Jidoaia Valley, 23.VII.2015, C.C.; 1 spec., Voineasa, 21.VII.2015, M.S.; 2 specs, Voineșita Valley, 45.42540°N, 23.97405°E, 613 m a.s.l., 23.VII.2015, E.I.

Rutpela maculata maculata (Poda, 1761)

Dobra Valley: 1 spec., 16.VIII.2014, C.A.; 1 spec., 19.VI.2015, C.C.; 1 spec., 22.VII.2015, E.I.; 1 spec., Fântânele Hill, 18.VI.2015, C.C.; 5 specs, Șugag, 21.VII.2015, M.S.; Tău Bistra: 1 spec., 7.VIII.2014; 4 specs, 19.VI.2015; 5 specs, 11.VIII.2015, C.C.; Lotrioara Valley: 3 specs, 1.VII.2014, M.S.; 4 specs, 4.VII.2014, C.C.; 2 specs, Mancu Valley, 45.61797°N, 24.07843°E, 820 m a.s.l., 5.VIII.2015, M.S.; 4 specs, Paltin Valley, 45.54921°N, 24.19927°E, 656 m a.s.l., 3.VIII.2015, C.C.; 3 specs, Prejba Valley, 45.63025°N, 24.08779°E, 5.VIII.2015, C.C.; 3 specs, Râușor Valley, 45.628892°N, 24.212142°E, 840 m, 1.VII.2014, M.S., C.C.; 1 spec., Sadu Valley, 45.642°N, 24.103°E, 17.VI.2015, E.I.; 1 spec., Șuvara Sașilor Reserve, 2.VII.2014, C.C.; 1 spec., Valea lui Ivan, 45.61615°N, 24.03639°E, 650 m a.s.l., 5.VIII.2015, C.C.; 7 specs, Jidoaia Valley,

23.VII.2015, C.C.&M.S.; 9 specs, Rudari Valley, 24.VII.2015, M.S., E.I., C.C.; 9 specs, Vătafu Valley, 24.VII.2015, C.C.; 1 spec., road from Voineasa to Vidra Lake, 793 m a.s.l., 21.VII.2015, M.S.; 15 specs, Voineasa, 21.VII.2015, M.S.; 4 specs, Voineșița Valley, 45.42540°N, 23.97405°E, 613 m a.s.l., 23.VII.2015, E.I.

Stenurella bifasciata (O.F. Müller, 1776)

1 spec., Șuvara Sașilor Reserve, 45.67281°N, 24.22454°E, 416 m a.s.l., 25.VII.2015, M.S.

Stenurella melanura (Linnaeus, 1758)

2 specs, Dobra Valley, 16.VIII.2014, C.C.; 4 specs, Șugag, 21.VII.2015, M.S.; Tău Bistra, "Frumoasa" Valley: 3 specs, 11.VII.2014; 5 specs, 7.VIII.2014, C.C.&M.S. and 7 specs, 19.VI.2015, C.C., E.I.; Lotrioara Valley: 10 specs, 1.VII.2014; 18 specs, 4.VII.2014, M.S., C.C.&E.I.; 4 specs, Mancu Valley, 5.VIII.2015, M.S.; 2 specs, Paltin Valley, 45.54921°N, 24.19927°E, 656 m a.s.l., 3.VIII.2015, M.S.&C.C.; Râușor Valley (45.628892°N, 24.212142°E, 840 m a.s.l.): 10 specs, 1.VII.2014; 5 specs, 3.VII.2014, M.S., E.I.&C.C.; 2 specs, Șuvara Sașilor Reserve, 45.672268°N, 24.230828°E, 409 m a.s.l., 2.VII.2014, M.S.; 17 specs, Jidoaia Valley, 23.VII.2015, M.S.&C.C.; 1 spec., Rudari Valley, 24.VII.2015, C.C.; 1 spec., Vătafu Valley, 24.VII.2016, M.S.; 5 specs, Voineasa, 21.VII.2015, M.S.; 14 specs, Voineșița Valley, 45.42540°N, 23.97405°E, 613 m a.s.l., 23.VII.2015, E.I.

Stenurella nigra (Linnaeus, 1758)

1 spec., Șuvara Sașilor Reserve, 19.VI.2015, E.I.

Stenurella septempunctata septempunctata (Fabricius, 1792)

1 spec., Tău Bistra, 19.VII.2015, C.C.; 1 spec., Lotrioara Valley, 1.VII.2014, E.I.; 6 specs, Râușor Valley, 45.628892°N, 24.212142°E, 840 m a.s.l., 1.VII.2014, M.S., E.I.; 2 specs, Luncșoara Valley, 45.649608°N, 24.221028°E, 520 a.s.l., 2.VII.2014, M.S.; 1 spec., Șuvara Sașilor Reserve, 45.67281°N, 24.22454°E, 416 m a.s.l., 25.VII.2015, M.S.; 1 spec., Rudari Valley, 24.VII.2015, E.I.; 1 spec., Voineasa, 21.VII.2015, M.S.; 2 specs, Voineșița Valley, 45.42540°N, 23.97405°E, 613 m a.s.l., 23.VII.2015, E.I.

Stictoleptura maculicornis (De Geer, 1775)

2 specs, Tău Bistra, 19.VI.2015, E.I., C.C.; 2 specs, Jidoaia Valley, 23.VII.2015, M.S.; 1 spec., Voineșița Valley, 45.42540°N, 23.97405°E, 613 m a.s.l., 23.VII.2015, E.I.

Stictoleptura rubra rubra (Linnaeus, 1758)

4 specs, Dobra Valley, 21.VII.2015, M.S.; 3 specs, "Frumoasa" Valley, 6.VIII.2014, M.S.&C.C.; Tău Bistra, "Frumoasa" Valley: 3 specs, 11.VII.2014; 3 specs, 7.VIII.2014, C.C.; 3 specs, Lotrioara Valley, 25.VII.2015, M.S.; 2 specs, Paltin Valley, 45.54921°N, 24.19927°E, 656 m a.s.l., 3.VIII.2015, M.S.; 2 specs, Șuvara Sașilor Reserve, 21.VIII.2014, C.C.; 1 spec., Rudari Valley, 24.VII.2015, E.I.; 3 specs, Vătafu Valley, 24.VII.2015, M.S.; 2 specs, Vidra Lake, 21.VII.2015, M.S.; 4 specs, Voineșița Valley, 45.42540°N, 23.97405°E, 613 m a.s.l., 23.VII.2015, E.I.&C.C.

Stictoleptura scutellata scutellata (Fabricius, 1781)

7 specs, Dobra Valley, 22.VII.2015, E.I.; 4 specs, Tău Bistra, 19.VI.2015, C.C.; 1 spec., Lotrioara Valley, 1.VII.2014, M.S.; 1 spec., Paltin Valley, 45.54921°N, 24.19927°E, 656 m a.s.l., 3.VIII.2014, M.S.; 1 spec., Sadu Valley, 7.VII.2014, C.C.; 1 spec., Valea

lui Ivan, 45.61615°N, 24.03639°E, 650 m a.s.l., 5.VIII.2015, C.C.; 3 specs, Voineasa, 21.VII.2015, M.S.; 1 spec., Voineșita Valley, 45.42540°N, 23.97405°E, 613 m a.s.l., 23.VII.2015, C.C.

Strangalia attenuata (Linnaeus, 1758)

Șuvara Sașilor Reserve (45.67281° N, 24.22454° E, 416 m a.s.l.): 1 spec., 25.VII.2015, C.C.; 2 specs, 27.VII.2015, C.C.

Oxymirus cursor (Linnaeus, 1758)

2 specs, Dobra Valley, 3.VI.2015, G.C. & C.A.; 13 specs, Tău Bistra, 4.VI.2015, G.C.; 2 specs, Lotrioara Valley 13.VII.2014, C.C.; 4 specs, Păltiniș, 3.VII.2014, E.I.; Sadu Valley: 2 specs, 29.VI.2014, C.A.; 2 specs, 20.V.2015, C.C.; 1 spec., Haneș Valley, 22.V.2015, L.M.; 8 specs, Jidoaia Valley, 21.V.2015, M.S.&C.C.

Dinoptera collaris (Linnaeus, 1758)

9 specs, "Frumoasa" Valley, 11.VII.2014, C.C.; 1 spec., Tău Bistra, 19.VI.2015, C.C.

Evodinus clathratus (Fabricius, 1793)

1 spec., Dobra Valley, 3.VI.2015, G.C.; 3 specs, Sadu Valley, 20.V.2015, Mi.S., C.C.&L.M.; 2 specs, Sădurel Valley, 45.5965°N, 23.9472°E, 20.V.2015, L.M.; 13 specs, Jidoaia Valley, 21.V.2015, M.S., C.C.&E.I.

Gaurotes virginea (Linnaeus, 1758)

2 specs, Tău Bistra, 19.VI.2015, C.C.; 2 specs, Sebeș Valley, 11.VII.2014, C.C.; 7 specs, "Frumoasa" Valley, 6.VIII.2014, M.S., C.C.; 15 specs, Păltiniș, 3.VII.2014, C.C., E.I.; 3 specs, Jidoaia Valley, 23.VII.2015, M.S.; 8 specs, Voineșita Valley, 45.42540°N, 23.97405°E, 613 m a.s.l., 23.VII.2015, E.I.

Pachyta lamed (Linnaeus, 1758)

1 spec., Tău Bistra, Sebeș Valley, 7.VIII.2014, M.S.; 1 spec., "Frumoasa" Valley, 6.VIII.2014, M.S.

Pachyta quadrimaculata (Linnaeus, 1758)

1 spec., Lotrioara Valley, 25.VII.2015, M.S.; 1 spec., Râușor Valley, 45.628892°N, 24.212142°E, 840 m a.s.l., 1.VII.2014, E.I.; 2 specs, Voineșita Valley, 45.42540°N, 23.97405°E, 613 m a.s.l., 23.VII.2015, E.I.

Pidonia lurida (Fabricius, 1792)

Dobra Valley: 1 spec., 3.VI.2015, G.C.; 1 spec., 19.VI.2015, C.C.; 4 specs, Fântânele Hill, 18.VI.2015, L.M.; 2 specs, Tău Bistra, 19.VI.2015, C.C.; 1 spec., Sadu Valley, 17.VI.2015, Mi.S.

Rhagium (Megarhagium) mordax (DeGeer, 1775)

2 specs, Sadu Valley, 20.V.2015, E.I.; 1 spec., Sădurel Valley, 45.5965°N, E: 23.9472°E, 20.V.2015, L.M.; 1 spec., Voineșita Valley, 45.42540°N, 23.97405°E, 613 m a.s.l., 23.VII.2015, E.I.

Rhagium (Megarhagium) sycophanta (Schrank, 1781)

1 spec., Șuvara Sașilor Reserve, 45.670971°N, 24.23121°E, 434 m a.s.l., 17.VI.2015, C.C.

Rhagium (Rhagium) inquisitor (Linnaeus, 1758)

2 specs, Tău Bistra, 4.VI.2015, G.C.; 1 spec., Lotru Valley, 30.VI.2014, C.A.; 7 specs, Sadu Valley, 20.V.2015, C.C.; 6 specs, Sădurel Valley, 45.5965°N, 23.9472°E, 20.V.2015, M.S.&L.M.; 1 spec., Voinești Valley, 45.42540°N, 23.97405°E, 613 m a.s.l., 23.V.2015, L.M.

Subfamily Spondylidinae Audinet – Serville, 1832

Arhopalus rusticus (Linnaeus, 1758)

1 spec., Luncoșoara Valley, 13.IX.2014, L.M.

Asemum striatum (Linnaeus, 1758)

1 spec., Sadu Valley, 20.V.2015, C.C.

Tetropium castaneum (Linnaeus, 1758)

1 spec., Șureanu chalet, 45.57595°N, 23.51102°E, 1725 a.s.l., 22.VII.2015, M.S.; 1 spec., “Frumoasa” Valley, 6.VIII.2014, D.S.; 3 specs, Lotru Valley, 30.VI.2014, C.A.; 1 spec., Sădurel Valley, 45.5965°N, 23.9472°E, 20.V.2015, M.S.; 1 spec., Haneș Valley, 22.V.2015, M.S.

Subfamily Cerambycinae Latreille, 1802

Aromia moschata moschata (Linnaeus, 1758)

2 specs, Lotrioara Valley, 13.VII.2014, C.C.; 3 specs, Obârșia Lotrului, 2.V.2015, E.I.

Callidium aeneum (De Geer, 1775)

1 spec., Șuvara Sașilor Reserve, 19.VI.2015, C.C.

Callidium violaceum (Linnaeus, 1758)

2 specs, Sadu Valley, 20.V.2015, C.C.; 3 specs, Sădurel Valley, 45.5965°N, 23.9472°E, 20.V.2015, M.S.

Phymatodes testaceus (Linnaeus, 1758)

1 spec., Sadu Valley, 20.V.2015, Mi.S.

Cerambyx cerdo (Linnaeus, 1758)

Fântânele Hill: 1 ♂, 45.75897°N, 23.64059°E, 765 m a.s.l., 18.06.2015, observed by C.C. on the oak trunk; 1 spec., 45.758937°N, 23.640517°E, 763 m a.s.l., 22.07.2015, observed by C.C. on isolated oak at the edge of forest; 1 spec., Luncoșoara Valley, 45.649608°N, 24.221028°E, 522 m a.s.l., 13.09.2014, observed by L.M. on the old oak trunk with dried parts; Șuvara Sașilor Reserve: 1 ♂, 1 ♀, 45.672268°N, 24.230828°E, 409 m a.s.l., 17.06.2015 observed by C.C. on the oak trunk; 1 spec., 45.670971°N, 24.23121°E, 434 m a.s.l., 17.06.2015 observed by C.C. on the oak at the edge of deciduous forest.

Cerambyx scopolii Fusslins, 1775

2 specs, Dobra Valley, 45.748°N, 23.675°E, 632 m a.s.l., 18.VI.2015, Mi.S.&E.I.; 2 specs, Fântânele Hill, 18.VI.2015, C.C.&L.M.; 2 specs, Tău Bistra, 19.VI.2015, C.C.; 4 specs, Lotrioara Valley, 4.VII.2014, M.S.&E.I.; 2 specs, Râușor Valley, 45.628892°N, 24.212142°E, 840 m, a.s.l., 1.VII.2014, E.I.; 1 spec., Sădurel Valley, 45.5965°N, 23.9472°E, 20.V.2015, M.S.

Anaglyptus mysticus (Linnaeus, 1758)

1 spec., Sadu Valley, 20.V.2015, M.S.; 1 spec., Vătafu Valley, 24.VII.2015, M.S.

Clytus lama Mulsant, 1847

1 spec., Tău Bistra, 19.VI.2015, M.S.; 1 spec., Sadu Valley, 20.V.2015, C.C.

Plagionotus arcuatus (Linnaeus, 1758)

1 spec., Lotrioara Valley, 2.VII.2014, G.C.; 5 specs, Sadu Valley, 20.V.2015, M.S., C.C.

Plagionotus floralis (Pallas, 1773)

1 spec., Lotrioara Valley, 1.VII.2014, E.I.

Rusticoclytus rusticus (Linnaeus, 1758)

1 spec., Şugag, 12.VI.2014, C.C.; Lotrioara Valley: 3 specs, 1.VII.2014, M.S.; 4 specs, 4.VII.2014, C.C.&G.C.; Sadu Valley: 3 specs, 30.VI.2014, C.A.; 13 specs, 20.V.2015, C.C.&E.I.; 1 spec., Turnurele Hill, 23.VII.2015, E.I.; 1 spec., Voineşti Valley, 45.42540°N, 23.97405°E, 613 m a.s.l., 21.V.2015, Mi.S.

Hylotrupes bajulus (Linnaeus, 1758)

2 specs, Şugag, 21.VII.2015, M.S.

Molorchus minor (Linnaeus, 1767)

1 spec., Sadu Valley, 20.V.2015, E.I.

Rosalia alpina alpina (Linnaeus, 1758) (Fig. 3 D)

1 spec., Dobra Valley, 45.74128°N, 23.68046°E, 659 m a.s.l., beech forest, 22.VII.2015, observed by L.M.; Fântânele Hill: 4 specs, 45.75859°N, 23.64008°E, 773 m a.s.l., on dried beech tree, 22.VII.2015, observed by C.C., M.S.; 2 specs, 45.75899°N, 23.64056°E, 792 m a.s.l., on the beech tree at the edge of deciduous forest, 22.VII.2015, observed by C.C.; 5 specs, Măgura Jinarilor, 45.70516°N, 23.63601°E, 1229 m a.s.l., on five isolated beech trees, 22.VII.2015, observed by C.C.&M.S.; 4 specs, Porumbelul Hill, 45.71755°N, 23.64648°E, 1047 m a.s.l., 18.VI.2015, observed by C.C.&E.I.; 3 specs, Lotrioara Valley, 45.5769°N, 24.18571°E, 507 m a.s.l., on secular beech tree, 25.VII.2015, observed by E.I.; 1 spec., Mancu Valley, 45.61797°N, 24.07843°E, 820 m a.s.l., on beech stub with humus in the middle, 5.VIII.2015, observed by M.S.; Răușor Valley: 1 spec., 45.628892°N, 24.212142°E, 840 m a.s.l., on the old beech trunk, 20.VIII.2014, observed by C.C.; 1 spec., 45.629108°N, 24.212749°E, 841 m a.s.l., on the old beech trunk, 20.VIII.2014, observed by L.M.; exoskeleton remains of one specimen, Poteca Valley, 45.63698°N, 24.19067°E, 711 m a.s.l., edge of *Fagus* sp. forest, 6.VIII.2015, observed by M.S.; Prejba Valley: 1 spec., 45.63092°N, 24.08779°E, 830 m a.s.l., on the beech log at the edge of forest, 5.VIII.2015, observed by C.C.; 4 specs, 45.63025°N, 24.08338°E, 774 m a.s.l., on the beech logs at the edge of forest, 5.VIII.2015, observed by C.C., L.M.&M.S.; 5 specs., Valea lui Ivan, 45.61608°N, 24.03647°E, 667 m a.s.l., on the beech logs store, 5.VIII.2015, observed by C.C., M.S., Mi.S.; 17 specs (seven of them dead specimens), Vătafu Valley, 45.41058°N, 23.99624°E, 564 m a.s.l., on the beech logs store close to the locality Valea Măceşului, 24.VII.2015, observed by C.C., E.I., L.M., M.S.&Mi.S.; Voineşti Valley: 11 specs, 45.42540°N, 23.97405°E, 613 m a.s.l., 23.VII.2015, 10 specs, 45.42672°N, 23.97695°E, 642 m a.s.l., on the beech logs store at the edge of forestry road, 23.VII.2015, and 2 specs, 45.482896°N,

24.013329°E, 922 m a.s.l., on the beech logs store, 23.VII.2015, observed by C.C., E.I., L.M., M.S.&Mi.S.

Subfamily Lamiinae Latreille, 1825

Aegomorphus clavipes (Schrank, 1781)

Lotrioara Valley: 1 spec., 2.VII.2014, M.S.; 1 spec., 4.VII.2014, G.C.; 1 spec., Voineșita Valley, 45.42540°N, 23.97405°E, 613 m a.s.l., 23.VII.2015, C.C.

Agapanthia villosoviridescens (DeGeer, 1775)

3 specs, Tău Bistra, 19.VI.2015, C.C.&E.I.; 1 spec., Lotrioara Valley, 4.VII.2014, E.I.; 2 specs, Voineșita Valley, 45.42540°N, 23.97405°E, 613 m a.s.l., 23.V.2015, E.I.

Dorcadion (Carinatodorcadion) aethiops (Scopoli, 1763)

1 spec., Șuvara Sașilor Reserve, 45.670971°N, 24.23121°E, 434 m a.s.l., 17.VI.2015, C.C.

Dorcadion (Cribridorcadion) pedestre pedestre (Poda, 1761)

1 spec., Dobra Valley, 3.VI.2015, G.C.; 1 spec., Șuvara Sașilor Reserve, 45.670971°N, 24.23121°E, 434 m a.s.l., 17.V.2015, C.C.

Morimus asper funereus (Mulsant, 1862)

Remarks: In Nature 2000 Standard Form is mentioned the species *Morimus funereus* Muls.

1 spec., Fântânele Hill, 45.75869°N, 23.64015°E, 771 m a.s.l., 22.VII.2015, at the base of an oak tree at the edge of deciduous forest, observed by L.M.; 2 specs, Tău Bistra, 45.69405°N, 23.602956°E, 11.VII.2014, on the beech logs, observed by C.C.; 2 specs, "Frumoasa" Valley, 14.VII.2014, observed by C.A.; Lotrioara Valley: 2 specs, 45.576894°N, 24.185811°E, 589 m a.s.l., 1.VII.2014, on the beech logs, observed by M.S.; 1 spec., 45.576176°N, 24.186217°E, 4.VII.2014, on the beech log, observed by E.I.; 1 spec., Râu Sadului, 45.61848°N, 24.08201°E, 869 m a.s.l., 20.V.2015, in mixed forest, in area with cuttings of old trees, observed by C.C.; 1 spec., Sadu Valley, along the road DJ 105, 45.64248°N, 24.09693°E, 586, 20.V.2015, on the beech logs store, observed by Mi.S.; 1 spec., Voineșita Valley, 45.42474°N, 23.97286°E, 603 m a.s.l., 23. VII.2015, on the beech logs store, observed by C.C.; 2 specs and exoskeleton remains of two specimens, Vătafu Valley, 45.41058°N, 23.99624°E, 568 m a.s.l., observed by C.C., E.I., L.M.&M.S.

Mesosa curculionoides (Linnaeus, 1761)

1 spec., Șuvara Sașilor Reserve, 45.672268°N, 24.230828°E, 409 m a.s.l., 2.VII.2014, M.S.

Monochamus sartor (Fabricius, 1787)

12 specs, "Frumoasa" Valley, 45.63289°N, 23.64512°E, 982 m a.s.l., 21.VII.2015, Mi.S., M.S., C.C.&L.M.; 3 specs, Lotrioara Valley, 25.VII.2015, C.C.&M.S.; 1 spec., Vătafu Valley, 24.VII.2015, M.S.; 1 spec., road from Voineasa to Vidra Lake, 45.42980°N, 23.90322°E, 793 m a.s.l., 21.VII.2015, M.S.; 2 specs, Voineasa, 21.VII.2015, M.S.; 2 specs, Voineșita Valley, 1076 m a.s.l., 45.49390°N, 24.02112°E, 23.VII.2015, M.S.&C.C.

Monochamus sutor sutor (Linnaeus, 1761)

2 specs, Dobra Valley, 19.VI.2015, C.C.; “Frumoasa” Valley: 4 specs, 45.63289°N, 23.64512°E, 982 m a.s.l., 21.VII.2015, M.S.&L.M.; 2 specs, 6.VIII.2014, D.S.; 3 specs, Vătafu Valley, 24.VII.2015, M.S.; 1 spec., road from Voineasa to Vidra Lake, 793 m a.s.l., 45.42980°N, 23.90322°E, 21.VII.2015, M.S.

Oberea (Amaurostoma) erythrocephala (Schrank, 1776)

1 spec., Sadu, 31.V.2012, I.I.

Oberea (Oberea) pupillata (Gyllenhal, 1817)

1 spec., Dobra Valley, 45.748°N, 23.675°E, 632 m a.s.l., 18.VI.2015, E.I.

Saperda scalaris (Linnaeus, 1758)

1 spec., Dobra Valley, 19.VI.2015, C.C.; 4 specs, Sadu Valley, 20.V.2015, M.S.&C.C.

Family Chrysomelidae Latreille, 1802

Subfamily Donaciinae Kirby, 1837

Plateumaris consimilis (Schrank, 1781)

2 specs, Voineșița Valley, 21.V.2015, E.I.

Subfamily Cassidinae Gyllenhal, 1813

Cassida vibex Linnaeus, 1767

2 specs, Sadu, 31.V.2012, E.I.

Cassida viridis Linnaeus, 1758

2 specs, Jidoaia Valley, 21.V.2014, E.I.

Subfamily Chrysomelinae Latreille, 1802

Chrysolina fastuosa (Scopoli, 1763)

Tău Bistra: 3 specs, 8.VIII.2014, C.C.; 2 specs, 19.VI.2015, C.C.; Lotrioara Valley: 1 spec., 1.VII.2014, C.C.; 1 spec., 4.VII.2014, C.C.; 1 spec., Râu Sadului, 20.V.2015, L.M.; 1 spec., Jidoaia Valley, 4.IX.2014, C.C.

Chrysolina herbacea (Duftschmid, 1825)

4 specs, Dobra Valley, 3.VI.2015, G.C. & C.A.; 3 specs, Fântânele Hill, 18.VI.2015, L.M.; 3 specs, Sebeș river (between Oașa Lake and Șugag), 11.VII.2014, C.C.; Tău Bistra, Sebeș Valley: 2 specs, 7.VIII.2014, C.C.; 1 spec., 8.VIII.2014, C.C.; 9 specs, 15.VIII.2014, C.C.; 5 specs, 19.VI.2015, C.C.; 2 specs, 11.VIII.2015, C.C.; Lotrioara Valley: 5 specs, 1.VII.2014, C.C.; 10 specs, 4.VII.2014, C.C.; 1 spec., Jidoaia Valley, 21.V.2015, M.S.; 5 specs, Voineșița Valley, 7.IX.2014, M.S.

Chrysolina marcasitica turgida Weise, 1882

1♂, Sadu Valley, 20.V.2015, C.C.

Chrysolina olivieri (Bedel, 1892)

3 specs, Fântânele Hill, 10.VIII.2015, C.C.; Tău Bistra, Sebeș Valley: 1 spec., 7.VIII.2014, M.S.; 3 specs, 15.VIII.2014, G.C.; 5 specs, Tău Bistra, 19.VI.2015, C.C.; Lotrioara Valley: 2 specs, 1.VII.2014, C.C.; 3 specs, 4.VII.2014, C.C.; 1 ♂, Megheș Valley, 3.VIII.2015,

M.S.; 1 ♂, Prejba Valley, 5.VIII.2015, C.C.; 4 specs, Sadu Valley, 20.V.2015, C.C. & L.M.; 1 spec., Jidoaia Valley, 4.IX.2014, C.C.; 1 spec., Voineșița Valley, 7.IX.2014, C.C.

Chrysolina polita (Linnaeus, 1758)

1 spec., Dobra Valley, 3.VI.2015, G.C.; 1 spec., Sebeș River (between Oașa Lake and Șugag), 11.VII.2014, C.C.; 6 specs, Tău Bistra, 8.VIII.2014, 19.VI.2015, C.C.; Lotrioara Valley: 2 specs, 1.VII.2014, C.C.; 1 spec., 4.VII.2014, E.I.; 1 spec, 4.VII.2014; 1 spec., 17.VIII.2014, C.C.; 1 spec., Sadu Valley, 20.V.2015, L.M.; 2 specs, Jidoaia Valley, 4.IX.2014, C.C.; 1 spec., Vătafu Valley, 24.VII.2015, M.S.; Voineșița Valley: 2 specs, 7.IX.2014, M.S.; 2 specs, 23.VII.2015, E.I.

Chrysolina rufa (Duftschmid, 1825)

3 specs, Lotru Valley, 22.V.2015, Mi.S.; 3 specs, Sadu Valley, 20.V.2015, C.C.&Mi.S.

Chrysolina sturmi (Westhoff, 1882)

1 ♂, Lotrioara Valley, 4.VII.2014, C.C.; 1 spec., Jidoaia Valley, 4.IX.2014, E.I.

Chrysolina umbratilis (Weise, 1887)

1 ♀, Sadu Valley, 20.V.2015, C.C.; Jidoaia Valley: 1 spec., 21.V.2014; 1 spec., 21.V.2015, E.I.&L.M.; 1 ♂, Voineșița Valley, 21.V.2015, L.M.

Chrysolina varians (Schaller, 1783)

2 specs, Dobra Valley, 3.VI.2015, C.A.; Fântânele Hill: 3 specs, 18.VI.2015, C.C.; 4 specs, 1073 m a.s.l., 22.VII.2015, M.S.; 1 spec., Haneș Valley, 22.V.2015, E.I.

Chrysomela populi Linnaeus, 1758

1 spec., Sadu Valley, 20.V.2015, C.C.; 2 specs, Șuvara Sașilor Reserve, 27.VII.2015, C.C.

Chrysomela tremula Fabricius, 1787

1 spec., “Frumoasa” Valley, 6.VIII.2014, C.C.

Chrysomela vigintipunctata (Scopoli, 1763)

2 specs, Dobra Valley, 3.VI.2015, G.C. & C.A.; Sadu Valley: 6 specs, 20.V.2015, C.C.&L.M.; 1 spec., 17.VI. 2015, Mi.S.

Gastrophysa viridula (Degeer, 1775)

1 spec., Dobra Valley, 3.VI.2016, C.A.; 1 spec., “Frumoasa” Valley, 6.VIII.2014, C.C.; 21 specs, Sadu Valley, 20.V.2015, C.C., Mi.S., E.I.&L.M.

Gonictena pallida (Linnaeus, 1758)

1 ♂, Tău Bistra, Sebeș Valley, 19.VI.2015, C.C.; 1 ♂, Cibanolui Valley, Ruginosu, 4.VI.2015, C.A.; 3 specs, Sadu Valley, 20.V.2015, C.C.

Gonictena viminalis (Linnaeus, 1758)

2 specs, Dobra Valley, 3.VI.2015, 19.VI.2015, C.A.&C.C.

Linnaeidea aenea (Linnaeus, 1758)

4 specs, Dobra Valley, 3.VI.2015, C.A.; 2 specs, Sebeș River (between Oașa Lake and Șugag), 11.VII.2014, C.C.; 4 specs, Tău Bistra, 19.VI.2015, C.C.; Lotrioara Valley: 11

specs, 1.VII.2014, C.C.&E.I.; 27 specs, 4.VII.2014, C.C.; 2 specs, 5.VIII.2014, C.C.; 2 specs, 17.VIII.2014, C.C.; 3 specs, Paltin Valley, 3.VIII.2015, M.S.; 2 specs, Râu Sadului, 20.V.2015, L.M.; 1 spec., Râușor Valley, 1.VII.2014, C.C.; 5 specs, Sadu Valley, 20.V.2015, Mi.S., C.C.&L.M.; 8 specs, Sădurel Valley, 20.V.2015, leg. M.S., E.I. & Mi.S.; Jidoaia Valley: 1 spec, 4.IX.2014, C.C.; 1 spec., 21.V.2015, M.S.; 2 specs, Voineșița Valley, 21.V.2015, E.I.&Mi.S.

Oreina caerulea (Olivier, 1790)

1 spec., Fântânele Hill, 18.VI.2015, C.C.; Lotrioara Valley: 1 spec., 1.VII.2014, C.C.; 2 specs, 4.VII.2014, E.I.; 1 spec., 13.VII.2014, C.C.

Oreina intricata (Germar, 1824)

2 specs, Sadu Valley, 20.V.2015, C.C.&Mi.S.

Oreina virgulata (Germar, 1824)

1 ♂, Tău Bistra, Sebeș Valley, 8.VIII.2014, C.C.

Timarcha goettingensis (Linnaeus, 1758)

1 spec., Dobra Valley, 03.VI.2015, G.C.; 2 specs, Sadu Valley, 20.V.2015, M.S.&E.I.

Timarcha metallica (Laicharting, 1781)

1 ♂, Lotrioara Valley, 4.VII.2014, M.S.

Subfamily Galerucinae Latreille, 1802

Lochmaea caprea (Linnaeus, 1758)

Dobra Valley: 3 specs, 3.VI.2015, C.A.; 1 spec., 19.VI.2015, C.C.

Galeruca tanacetii (Linnaeus, 1758)

1 spec., Porumbelul Hill, 18.06.2015, L.M.; 1 spec., Lotrioara Valley, 4.VII.2014, C.C.; 1 spec., Jidoaia Valley, 21.V.2015, L.M.

Subfamily Cryptocephalinae Gyllenhal, 1813

Cryptocephalus biguttatus (Scopoli, 1763)

1 spec., Șuvara Sașilor Reserve, 2.VII.2014, E.I.

Cryptocephalus bipunctatus (Linnaeus, 1758)

1 spec., Râușor Valley, 2.VII.2014, C.C.

Cryptocephalus hypochoeridis (Linnaeus, 1758)

2 specs, Fântânele Hill, 18.VI.2015, C.C.

Cryptocephalus imperialis Laicharting, 1781

1 spec., Fântânele Hill, 1073 m a.s.l., 22.VII.2015, M.S.

Cryptocephalus moraei (Linnaeus, 1758)

1 spec., Sadu, 31.V.2015, I.Ș.I.

Cryptocephalus sericeus (Linnaeus, 1758)

1 ♂, Tău Bistra, 15.VIII.2014, C.C.

Cryptocephalus violaceus Laicharting, 1781
3 specs, Fântânele Hill, 18.VI.2015, C.C.

Cryptocephalus vittatus Fabricius, 1775
1 spec., Râușor Valley, 1.VII.2014, E.I.

Labidostomis longimana (Linnaeus, 1761)
1 spec., Râușor Valley, 1.VII.2014, leg. E.I.; 2 specs, Sadu, 31.V.2012, leg. I.Ș.I.

Smaragdina xanthaspis (Germar, 1824)
1 specs., Râușor Valley, 1.VII.2014, E.I.

Subfamily Eumolpinae Hope, 1840
Chrysochus asclepiadeus Pallas, 1773
3 specs., Șuvara Sașilor Reserve, 2.VII.2014, C.C.

Superfamily Curculionoidea Latreille, 1802
Family Anthribidae Billberg, 1820
Subfamily Anthribinae Billberg, 1820
Platyrhinus resinosus (Scopoli, 1763)
1 spec., Lotrioara Valley, on beech bark, 4.VII.2014, L.M.; 2 specs, Fântânele Hill, 18.VI.2015, L.M.

Family Attelabidae Billberg, 1820
Apoderus coryli Linnaeus, 1758
1 spec., Lotrioara Valley, 4.VII.2015, M.S.; 4 specs, Voinoșița valley, 23.VII.2015, E.I.

Family Curculionidae Latreille, 1802
Subfamily Scolitinae Latreille, 1804
Ips typographus Linnaeus, 1758
10 specs, Tău Bistra, 4.VI.2015, G.C.; 2 specs, "Frumoasa" Valley, 6.VIII.2014, under the bark of cut trunk spruce, M.S.; 3 specs, Păltiniș, 3.VII.2014, pheromone traps in spruce forest – logging and plantation area brood; 1 spec., Sădurel Valley, 20.V.2015, M.S.

In 2014 and 2015, during the field trips organized in ROSCI0085 and its surroundings, six beetle species which are included in the Annex II of the Habitats Directive 92/43/EEC were observed and photographed: *Carabus variolosus* Fabricius, *Lucanus cervus* (Linnaeus), *Osmoderma eremita* (Scopoli), *Cerambyx cerdo* (Linnaeus), *Morimus funereus* Mulsant and *Rosalia alpina* (Linnaeus). All these species are also protected by the national legislation, being included in the Annexes 3 and 4 A of OUG 57/2007, on the regime of the protected natural areas, conservation of the natural habitats, of wild flora and fauna, amended and supplemented by Law 49/2011. Out of them, some endemic or rare species/subspecies were collected: *Carabus planicollis planicollis* Küster – endemic subspecies to Parâng, Retezat, Godeanu and Domogled Mountains, *Carabus obsoletus carpathicus* Palliardi – endemic subspecies to Southern Carpathians, *Pterostichus findelii* (Dejean) – endemic species to the Carpathians Mts, *Pterostichus pilosus wellensii* (Drapiez) – endemic subspecies to the Carpathians Mts, *Poecilus szepligetii szepligetii* (Csiki) – which is known from Romania, Ukraine,

Russia and Kazakhstan, *Carabus gigas* Creutzer – a rare species in Romania, *Ctenicera heyeri* (Saxesen) – a new species for “Grigore Antipa” Museum Coleoptera collection.

From the four coleopteran species mentioned in the Natura 2000 Standard Form ROSCI0085 “Frumoasa”, two species were observed: *Cerambyx cerdo* and *Rosalia alpina*. We believe that the record of *Buprestis splendens* Fabricius from Cibin Mts is based on a taxonomic mistake (Bielz, 1887; Petri, 1912). The species is known from Banat and two specimens were collected from Domogled Mt (Băile Herculane) in 2000 (Ruicănescu, 2015). As regards *Pseudogaurotina excellens* (Brancsik), a Carpathian endemic species, it was less mentioned in literature: Transylvania (Petri, 1912), Cindrel (Cibin) Mountains – Zibinsklamm = Cibin Gorges (Petri, 1925–1926), Gura Apei, Râul Mare Valley, Retezat Mts (Panin & Săvulescu, 1961) and Rodna Mts (Nitzu & al., 2008). In the Coleoptera Museum Collection there are three specimens from Gura Apei, Săpânța (Serafim, 2005) and Broșteni, Suceava county (Serafim & Maican, op.cit.).

ACKNOWLEDGEMENTS

The authors thank to all colleagues who participated in the Project and collected and observed beetle specimens among other invertebrate specimens: Dr. Costică Adam, Dr. Gabriel Chișamera, Dr. Cristina Constantinescu, Dr. Lavinia Iancu, Dr. Elena Iorgu, Dr. Ionuț Ștefan Iorgu, Dr. Liviu Moscaliuc, Dr. Dumitru Murariu, Dr. Ana Maria Petrescu, Dumitru Stan, Dr. Mihai Stănescu. Our sincere thanks are due to Dr. Tiberiu Sahlean for generating the map of collecting sites and Dr. Elena Iorgu and George Năzăreanu for the photos. We are grateful to anonymous reviewers for improving the manuscript.

REFERENCES

- BIELZ, E. A. (1887) Die Erforschung der Käferfauna Siebenbürgens bis zum Schlusse des Jahres 1886. Verhandlungen und Mittheilungen des Siebenbürgischen Vereins für Naturwissenschaften, 37: 3–90. (in German)
- KASZAB, Z. (1940) Die Buprestiden Ungarns, mit Beschreibung neuer Formen (Coleoptera). Fragmenta faunistica hungarica 3(4): 81–116. (in German)
- KUTHY, D. (1918) Fauna Regni Hungariae. Animalium Hungariae. Edidit Regia Societas Scientiarum Naturalium Hungarica, Budapest: 1–213. (in Hungarian)
- LÖBL, I., A. SMETANA (eds.) (2003) Catalogue of Palaearctic Coleoptera. Archostemata-Myxophaga-Adephaga. 1, Apollo Books, Stenstrup, 819 pp.
- LÖBL, I., A. SMETANA (eds.) (2004) Catalogue of Palaearctic Coleoptera. Hydrophiloidea-Histeroidea-Staphylinoidea. 2, Apollo Books, Stenstrup, 942 pp.
- LÖBL, I., A. SMETANA (eds.) (2006) Catalogue of Palaearctic Coleoptera. Scarabaeoidea-Scirtoidea-Dascilloidea-Buprestoidea-Byrrhoidea. Apollo Books, Stenstrup, 690 pp.
- LÖBL, I., A. SMETANA (eds.) (2007) Catalogue of Palaearctic Coleoptera. Elateroidea-Derodontoidea-Bostrichoidea-Lymexyloidea-Cleroidea-Cucujoidea. 4, Apollo Books, Stenstrup, 935 pp.
- LÖBL, I., A. SMETANA (eds.) (2008) Catalogue of Palaearctic Coleoptera. Tenebrionoidea. 5, Apollo Books, Stenstrup, 670 pp.
- LÖBL, I., A. SMETANA (eds.) (2010) Catalogue of Palaearctic Coleoptera. Chrysomeloidea, 6, Apollo Books, Stenstrup, 924 pp.
- LÖBL, I., A. SMETANA (eds.) (2011) Catalogue of Palaearctic Coleoptera. Curculionoidea I, 7, Apollo Books, Stenstrup, 373 pp.
- MAICAN, S. (2004) Contributions to the knowledge of the chrysomelid fauna (Coleoptera: Chrysomelidae) from Romanian Carpathians. Acta Zoologica Universitatis Comenianae, 46 (2): 107–114.
- NITZU, E., I., POPA, A. NAE, C. IUȘAN (2008) Faunal research on the invertebrate (Coleoptera, Orthoptera, Collembola, Araneae) in the Rodnei Mountains Biosphere Reserve. Travaux de l'Institut de Spéologie “Emil Racovitza”, 47: 3–52.
- PANIN, S., N. SĂVULESCU (1961) Coleoptera: Cerambycidae. In: Fauna României. Edit. Academiei Române, 10 (5): 1–523. (in Romanian)
- PETRI, K. (1912) Siebenbürgens Käferfauna auf Grund ihrer Erforschung bis zum Jahre 1911. Verhandlungen und Mittheilungen des Siebenbürgischen Vereins für Naturwissenschaften zu Hermannstadt: 1–376. (in German)

- PETRI, K. (1925) 1926 – Ergänzungen und Berichtigungen zur Käferfauna Siebenbürgens 1912. Verhandlungen und Mitteilungen des Siebenbürgischen Vereins für Naturwissenschaften zu Hermannstadt, 76: 165–206. (in German)
- RUICĂNESCU, A. (2015) Insecta: Coleoptera-Buprestidae. In: Fauna României. Editura Academiei Române, 10 (7): 1–390. (in Romanian)
- RUICĂNESCU, A., F. PATKO (1995) Studiul comunităților de coleoptere din Munții Parâng. Buletin de informare entomologică. Societatea Lepidopterologică Română, 6 (3–4): 217–229. (in Romanian)
- SERAFIM, R. (1991) Les Coccinellides (Coleoptera) gardés dans la collection du Muséum d'Histoire naturelle "Grigore Antipa" (Bucarest). Travaux du Muséum d'Histoire Naturelle "Grigore Antipa", 31: 223–253. (in French)
- SERAFIM, R. (2005) Catalogue of the Palaearctic species of Prioninae and Lepturinae (Coleoptera: Cerambycidae) from the patrimony of "Grigore Antipa" National Museum of Natural History (Bucharest) (Part I). Travaux du Muséum National d'Histoire Naturelle "Grigore Antipa", 48: 103–117.
- SERAFIM, R. (2006) The Catalogue of the palaearctic species of Lepturinae (Coleoptera: Cerambycidae) from the patrimony of „Grigore Antipa” National Museum of Natural History (Bucharest) (Part II). Travaux du Muséum National d'Histoire Naturelle "Grigore Antipa", 49: 203–238.
- SERAFIM, R. (2009) The Catalogue of the palaearctic species of Necydalinae and Cerambycinae (Coleoptera: Cerambycidae) from the patrimony of „Grigore Antipa” National Museum of Natural History (Bucharest) (Part IV). Travaux du Muséum National d'Histoire Naturelle "Grigore Antipa", 52: 263–292.
- SERAFIM, R. (2010) The Catalogue of the palaearctic species of Lamiinae (Coleoptera: Cerambycidae) from the patrimony of „Grigore Antipa” National Museum of Natural History (Bucharest) (Part V). Travaux du Muséum National d'Histoire Naturelle "Grigore Antipa", 53: 235–272.
- SERAFIM, R., S. MAICAN (2011) Catalogue of Cerambycidae, Megalopodidae and Chrysomelidae (Coleoptera: Chrysomeloidea) recently entered in the patrimony of „Grigore Antipa” National Museum of Natural History (Bucharest). "Igor Ceianu" Collection. Travaux du Muséum National d'Histoire Naturelle "Grigore Antipa", 54 (2): 425–460.
- STAN, M. (2010) On the species of *Ocypus* Leach of the Carpathian Basin with special reference to the species of Romania (Coleoptera: Staphylinidae: Staphylininae: Staphylinini). Acta entomologica serbica 15 (2): 171–193.
- STAN, M. (2012) On the species of *Philonthus* Stephens (Coleoptera: Staphylinidae: Staphylininae: Staphylinini: Philonthina) in the collections of Romanian natural history museums. Travaux du Muséum National d'Histoire Naturelle "Grigore Antipa", 55 (2): 233–276.
- STAN, M. (2013) Romanian species of lucanids (Coleoptera: Scarabaeoidea: Lucanidae) in the collections of Grigore Antipa National Museum of Natural History. Travaux du Muséum National d'Histoire Naturelle „Grigore Antipa”, 56 (2): 173–184.
- SZÉL, G., I. ROZNER, I. KOCS (1995) Adatok Erdély (Romania) bogárfaunájához az utóbbi évek gyűjtéseinek alapján (Insecta: Coleoptera), Acta Hargitensia II, Aluta – XIX. A Csiki Székely Múzeum és a Székely Nemzeti Múzeum Evkönyve: 73–92.
- TĂUȘAN, I., C. BUCȘA (2010) Palaearctic longhorn beetles (Coleoptera: Cerambycidae) from "Dr. Karl Petri" Collection of the Natural History Museum of Sibiu (Romania). Part I: Lepturinae Subfamily. Travaux du Muséum National d'Histoire Naturelle "Grigore Antipa", 53: 223–233.
- WORELL, E. (1951) – Contribuții la cunoașterea faunei coleopterelor și lepidopterelor din Transilvania. Mai ales din împrejurimile orașului Sibiu. Buletin Științific. Secțiunea de Științe Biologice, Agronomie, Geologie și Geografie. III (3): 533–543. (in Romanian)
- EUROPEAN COMMISSION (1992) Council Directive 92/43/EEC of 21 May 1992 on the conservation of natural habitats and of wild fauna and flora (online). Official Journal L 206, 22/07/1992 P. 0007-0050. Consolidated version 01.01.2007. Available at: http://ec.europa.eu/environment/nature/legislation/habitatsdirective/index_en.htm accessed on 2016.08.01.