

## The Catalogue of Donaciinae and Criocerinae Species (Coleoptera: Chrysomelidae) from the New Leaf Beetle Collection from “Grigore Antipa” National Museum of Natural History (Bucharest) (Part I)

Sanda MAICAN<sup>1, \*</sup>, Rodica SERAFIM<sup>2</sup>

<sup>1</sup>Institute of Biology Bucharest of Romanian Academy, 296 Splaiul Independenței, 060031 Bucharest, P.O. Box 56–53, Romania.

<sup>2</sup>“Grigore Antipa” National Museum of Natural History, Kiseleff 1, 011341 Bucharest, Romania.

\*corresponding author, e-mail: sanda.maican@ibiol.ro

Received: August 23, 2016; Accepted: November 22, 2016; Available online: December 23, 2016; Printed: December 30, 2016

**Abstract.** The paper presents data on 33 palaeartic species of the Donaciinae (Donaciini, Haemoniini and Plateumarini tribes) and Criocerinae preserved in the new Chrysomelidae collection of “Grigore Antipa” National Museum of Natural History (Bucharest). Among the valuable species preserved in this collection, *Macrolea appendiculata* (Panzer) and *M. mutica* (Fabricius) – two very rare European Donaciinae beetles, should be mentioned.

**Key words:** Chrysomelidae, Donaciinae, Criocerinae, collections, “Grigore Antipa” National Museum of Natural History, Bucharest.

### INTRODUCTION

The entomological collections stored in the patrimony of “Grigore Antipa” National Museum of Natural History of Bucharest have a historical and documentary scientific value, both at national and international level.

In “Grigore Antipa” Museum, the Chrysomelidae material is included in the old Collection of Palaearctic Coleopterans (partial data published) and in the Collection of Chrysomelidae, recently formed.

The new collection, which we refer in this paper, gathers:

- material preserved in the old coleopteran collection from the Palaearctic area, including specimens from Richard Canisius, Deszö Kenderessy, Fridrich Deubel, Arnold Lucien Montandon and Emil Várady collections, acquired between 1883–1923. The material from “Deszö Kenderessy” collection, an amateur entomologist from Transylvania, was collected at the end of the 19<sup>th</sup> century from Hațeg Depression. The “Arnold Lucien Montandon” collection consists in material collected at the end of the 19<sup>th</sup> century and the beginning of the 20<sup>th</sup> one, from the royal estate of Broșteni, the Carpathian Mountains (Suceava County), Bârlad County, Comana Forest (Giurgiu County) and Dobrogea. A part of the material preserved in the “Fridrich Deubel” collection originates from the surroundings of Brașov. The material from the “Emil Várady” collection was collected from Banat and Maramureș in the first half of the 20<sup>th</sup> century. The old collection includes also specimens collected by Richard Canisius (painter of the “Grigore Antipa” Museum during 1907–1934) from Bucharest.

- material collected from Romania (1951–2015) by the team of specialists of the “Grigore Antipa” Museum and their collaborators during different research projects on the Romanian fauna (Southern Dobrogea, the Danube Delta Biosphere Reserve, the Great Romanian Field, Romanian littoral of the Black Sea, Bucharest and surroundings, Maramureş region, the Piatra Craiului National Park, Putna – Vrancea National Park, Frumoasa – ROSCI 0085) and other sites of Community importance;
- material from „Dr. Nicolae Săvulescu” collection which was included in the Museum patrimony in 1992, after his death;
- specimens donated by Igor Ceianu, Mihai Şerban Procheş, Viorel Ungureanu, Vladimir Brădescu, Daniel Kurzeluk, Victor Gheorghiu;
- material collected during the scientific expeditions organized by “Grigore Antipa” Museum in the surroundings of the Mediterranean basin (Turkey, Tunisia, Morocco, Syria), between 2005–2008.

A part of the material of Chrysomelidae were published by Negru & Roşca (1967), Negru (1968), Hoinic (1994), Maican & Serafim (2001, 2004, 2009, 2012), Maican (2006, 2007 a, b), Serafim & Maican (2004, 2008, 2011), Ungureanu et al. (2008).

#### MATERIAL AND METHODS

This paper presents the results of the study of the Donaciinae and Criocerinae material preserved in the new Chrysomelidae collection of “Grigore Antipa” National Museum of Natural History, Bucharest. The material comprises 1,169 specimens, of which 607 are Donaciinae and 562 Criocerinae.

The presentation of each species includes information on the collecting date and place, the number of the specimens and the name of the collector. In addition, information on the host plants of the species are also presented.

The species identification was made by Ştefan Negru<sup>1</sup>, Atena Roşca<sup>2</sup>, Sanda Maican, Cristina Hoinic<sup>3</sup>, Rodica Serafim, Mircea Alexandru Ieniştea<sup>4</sup>.

Nomenclature and systematical order follows the *Catalogue of Palaearctic Coleoptera* (Löbl & Smetana, 2010), namely Silfverberg (2010) for Donaciinae subfamily, and Schmitt (2010) for Criocerinae subfamily.

##### Abbreviations:

coll. – collection; f.h. – forest house; Mt. (Mts) – Mountain (Mountains); m a.s.l. – meters above sea level; spec. (s) – specimen/specimens.

Names of the collectors: A.B. – A. Bulumac; Ad.R. – Adrian Ruicănescu; A.V. – Adriana Văraru; A.C. – Alin Constantinescu; A.M.K. – Ana Maria Krapal; A.I. – Alexandru Iftime; A.P. – Angela Petrescu; A.Pe. – Angela Petrişor; A.L.M. – Arnold Lucien Montandon; A.R. – Atena Roşca; Au.P. – Aurel Papadopol; A.P.G. – Aurelian Popescu-Gorj; A.S. – Aurora Stănescu; A.Z. – A. Zoppa; C.P. – Corneliu Părvu; C.A. – Costică Adam; C.B. – Cristina Ban; C.H. – Cristina Hoinic; D.D. – Dan Dumitrescu; Da.K. – Daniel Kurzeluk; D.K. – Deszo Kenderessy; D.L. – Dochîţa Lupu; D.M. – Dumitru Murariu; D.R. – Dorel Ruşti; D.S. – Dragoş Scăunaşu; Ed.R. – Edmund Reitter; E.C. – Elena Cursaru; E.I. – Elena Iorgu; E.V. – Emil Văradi; Fr.D. – Fridrich Deubel; G.A. – Gabriela Andrei; G.B. – Gabriel Blănaru; I.C. – Igor Ceianu; I.D. – Ion Drăghia; I.M. – Ioana Matache; I.S. – Igor Sienkiewicz; I.Şt.I. – Ionuţ Ştefan Iorgu; L.M. – Liviu Moscaliuc; Ma.F. – Mariana Foltin; M.B. – Mihaela Barcan (Achim);

<sup>1</sup>Ştefan Negru (1923–1970), worked at the Museum during 1963 to 1970.

<sup>2</sup>Atena Roşca (1930–1976), worked at the Museum during 1954 to 1976.

<sup>3</sup>Cristina Hoinic (1967–1997), worked at the museum during 1992 to 1997.

<sup>4</sup>Mircea Alexandru Ieniştea (1910–1994), a renowned entomologist and professor, collaborator of the Museum.

M.F. – M. Filip; M.R. – Mihai Radu; M.W. – Medeea Weinberg; M.S. – Melanya Stan; M.B. – Mihai Băcescu; M.S.P. – Mihai Șerban Procheș; M.A. – Mircea Andrei; M.A.I. – Mircea Alexandru Ienișteană; N.G. – Nicolae Gâldean; N.S. – Nicolae Săvulescu; O.P. – Oana Popa; R.A. – R. Albrecht; R.C. – Richard Canisius; R.S. – Rodica Serafim; S.M. – Sanda Maican; S.S. – S. Sârbu; Șt.N. – Ștefan Negru; V.U. – Viorel Ungureanu; V.B. – Vladimir Brădescu; V.G. – Victor Gheorghiu; X.S.P. – Xenia Scobiola Palade.

Abbreviations of the county names in Romania:

AB – Alba; AG – Argeș; AR – Arad; BC – Bacău; BN – Bistrița Năsăud; BR – Brăila; BV – Brașov; BZ – Buzău; CS – Caraș Severin; CL – Călărași; CJ – Cluj; CT – Constanța; DB – Dâmbovița; DJ – Dolj; GL – Galați; GJ – Gorj; GR – Giurgiu; HD – Hunedoara; HR – Harghita; IF – Ilfov; IL – Ialomița; IS – Iași; MH – Mehedinți; MM – Maramureș; MS – Mureș; NT – Neamț; OT – Olt; PH – Prahova; SB – Sibiu; SM – Satu Mare; SV – Suceava; TL – Tulcea; TR – Teleorman; VS – Vaslui; VL – Vâlcea; VN – Vrancea.

According to labels, Bucharest is also noted București (Romanian name), Bucuresci (the old spelling of the city) or Bucarest (in French).

## RESULTS AND DISCUSSIONS

33 species from seven genera belonging to the Donaciinae and Criocerinae subfamilies are preserved in the new Chrysomelidae collection of “Grigore Antipa” National Museum of Natural History.

### Subfamily Donaciinae Kirby, 1837

#### Tribe Donaciini Kirby, 1837

##### *Donacia* Fabricius, 1775

##### *Donacia aquatica* (Linnaeus, 1758)

*Material*: 2 specs, Prejmer (BV), 23.X.1956, I.C.; 5 specs, Putna Valley (SV) (ash and spruce forest), 23.V.1981, I.C.; 1 spec., Cheia (CT), 23.VI.1993, M.A.I.; 1 spec., Baci Forest (CJ), 17.V.1994, Ad.R.; 2 specs, Baci Gorges (CJ), 500 m a.s.l., 1.V.1995, Ad.R. (Fig. 1, B – habitus, C – aedeagus).

*Host plants*: *Sparganium simplex*, *Ranunculus lingua*, *Carex acuta*, *Typha latifolia* (Mohr, 1966, 1985).

##### *Donacia bicolora bicolora* Zschach, 1788

*Material*: Museum Bucuresci, adunat, without other data (2 specs), coll. D.K. (1 spec.), Bucarest, without other data, coll. R.C. (2 specs); 3 specs, București (IF), 20.VIII.1951, M.A.I.; 1 spec. (♀), Baci Gorges (CJ), 500 m a.s.l., 1.VI.1995, Ad.R. (Fig. 1 A).

*Host plants*: *Sparganium ramosum*, *Typha* sp., *Sagittaria* sp., *Glyceria* sp., *Carex* sp. (Mohr, 1985; Warchałowski, 2003).

##### *Donacia cinerea* Herbst, 1784

*Material*: 1 spec., Brașov Mts (Kronstädter Gerbirge), without other data, coll. Fr.D.; 4 specs, Borcea arm (IL), 30.V.1954; 4 specs, Borcea arm, Ezerul cu Butuci (IL), 30.VI.1954; 2 specs, Călărași (CL), 20.VI.1963, P.S.X.; 1 spec., Chilia (TL), 7.V.1964; 1 spec. (♀), Caraorman, The Danube Delta (TL), 8.V.1967, M.W.; 3 specs, Sulina, The Danube Delta (TL) 7.VII.1968, A.P.G.; 1 spec., Nucet (DB), 15.VI.1970, D.M.; 2 specs, Gura-Portiței, The Danube Delta (TL), 3–4.VI.1994, C.H.; 2 specs (♂, ♀), Dranov, The Danube Delta (TL), 28.V.1995, A.I. (Fig. 2 A).

*Host plants*: *Typha latifolia*, *T. angustifolia*, *Sparganium* sp., *Phragmites* sp., *Carex* sp. (Mohr, 1966, 1985).

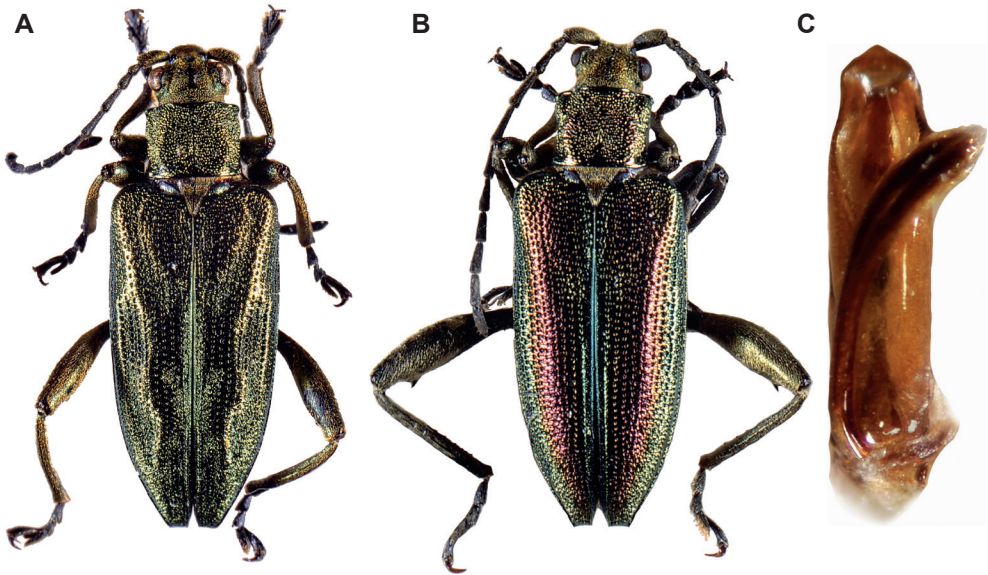


Fig. 1 – A, *Donacia bicolora bicolora*, habitus; B, C, *Donacia aquatica* (B, habitus; C, aedeagus) (Photos by G. Năzăreanu).

*Donacia clavipes clavipes* (Fabricius, 1792)

*Material:* 1 spec., Hațeg (HD), without other data, coll. D.K., 1 spec., Ieud (MM), 4.VII.1995, C.P.

*Host plants:* *Phragmites communis*, *Phalacris arundinacea* (Mohr, 1985).

*Donacia crassipes* Fabricius, 1775

*Material:* 1 spec. (♂), Reghin region (Sächsisch-Regen) (MS), 10.VIII.1922; 1 spec., Periprava, The Danube Delta (TL), 26.VII.1957, I.S.; 2 specs, Sulina, The Danube Delta (TL), 9.VII.1965, A.P.G., 13.VII.1971, A.P.G.; 1 spec., Crișan, The Danube Delta (TL), 17.VII.1967, S.X.P.; 1 spec. (♂), Caraorman, The Danube Delta (TL), 29.VII.1969, M.W.

*Host plants:* *Nuphar luteum*, *Nymphaea alba*, *Typha angustifolia* (Mohr, 1985).

*Donacia dentata* Hoppe, 1795

*Material:* 1 spec., Western Europe (Gallia), without other data, coll. Ed.R.; 2 specs (♂, ♀) Sulina, The Danube Delta (TL), 21.VII.1964, A.P.G., 8.VII.1968, M.W. (Fig. 2 B).

*Host plants:* *Sagittaria sagittifolia* and *Alisma plantagoaquatica* (Warchałowski, 2003).

*Donacia impressa* Paykull, 1799

*Material:* 2 specs, Dranov, The Danube Delta (TL), 28.V.1995, A.I.

*Host plants:* *Scirpus lacustris* (Mohr, 1966).

*Donacia malinovskyi* Ahrens, 1810

*Material:* 1 spec., Hărman (Honigberg) (BV) (without other data), coll. Fr.D. (Fig. 2 C).

*Host plants:* *Glyceria aquatica*, *Hydrocharis morsus ranae*, *Arundo phragmites* (Mohr, 1985).

*Donacia marginata* Hoppe, 1795

*Material:* 4 specs, București, without other data, coll. D.K., R.C.; 2 specs, Hațeg (Hatzeg) (HD), without other data, coll. D.K.; 1 spec., Hărman, Olt valley (Altfluss), without other data, coll. Fr.D.; 1 spec., București, Tei Lake (IF), 15.VI.1950, M.A.I.; 2 specs, București, 20.VIII.1951, M.A.I.; 1 spec., C.A. Rosetti, The Danube Delta (TL), VII.1950; 3 specs, Mogoșoaia (IF), 10.V.1955, X.S.P., 7.V.1961, X.S.P., 5.V.1963, P.S.X.; Comana Forest (GR), 16.VI.1955, N.S. (1 spec.), 31.V.1956 (1 spec.), 20.V.1957 (1 ♀), 15.VI.1963 (11 specs), 21.V.2005, Da.K. (4 specs); 1 spec., Iortmac Lake (CT), 22.VII.1955, N.S.; 1 spec. (♀), Băneasa Forest (IF), 12.V.1956, N.S.; Periprava, The Danube Delta (TL), 5.VII.1956, N.S. (1 spec.), 14–16.VII.1966, X.S.P., Șt.N. (4 specs); 1 spec., Cernica Forest (IF), 10.IV.1959, X.S.P.; Sulina, The Danube Delta (TL), 19.VII.1962, A.P.G. (1 spec.), 27.VII.1964, Șt.N. (1 spec.); 2 specs, Hanu Conachi (GL), IV.1963; 1 spec., Chilia (TL), 7.V.1964; 2 specs, Poiana Șarânga, Sinaia (PH), 28.V.1964, Șt.N.; 1 spec., Făcăi, Craiova (DJ), 1.VI.1964; 1 spec., Corabia (OT), 2.VII.1964; Caraorman, The Danube Delta (TL), 8–10.V.1967, X.S.P., M.W. (2 ♀♀), 12.V.1968, X.S.P. (1 spec.), 8.X.1968, Șt.N. (2 specs), 10.VI.1969, Șt.N. (2 specs); 1 spec., Mircești (IS), 23.V.1968; Sfântu-Gheorghe, The Danube Delta (TL), 13.VIII.1971 (3 specs), 8.VII.1972 (5 specs); 2 specs, Bistreț (DJ), 2.VI.1982, C.P.; 1 spec., Carei (SM), 14.V.1985, N.G.; 1 spec., Cămărzana (SM), 19.V.1987, C.P.; 5 specs, Băile Herculane (CS), 10.V.1991, N.S.; Călugăreni (GR), 27.V.1995, C.P. (1 spec.), 4.V.1996, C.P. (1 spec.); 1 spec., Ieud (MM), 4.VII.1995, C.P.; 1 spec. (♂), Călinești, Văleni (“Săcătura” f.h.) (MM), 7.VII.1995, C.P.; 2 specs, Corbiu Mari (DB), 21.VIII.1996, M.S.P.; 1 spec., București (IF), 1.IX.1996, M.S.P.; 1 spec., Cetățuia (GR), 26.IV.2004, M.S.; 2 specs, Neajlov Valley (GR), 44.50444° N, 25.53848° E, 22 – 23.V.2015, O.P., A.M.K.

*Host plants:* *Sparganium ramosum*, *Carex* sp., *Typha* sp. (Mohr, 1985; Warchałowski, 2003).

*Donacia semicuprea* Panzer, 1796

*Material:* 1 spec., Austria, Mödling, without other data, coll. D.K.; 2 specs, Sibiu (Hermannstadt) (SB), coll. Moritz von Kimakovicz; 1 spec., Mireșu Mare (Nagynyires) (MM), 1940, coll. E.V.; 3 specs, București (IF), 20.VIII.1951, M.A.I.; 1 spec., Sfântu-Gheorghe, The Danube Delta (TL), 8.VII.1972; 1 spec., Sebeșu de Sus (SB), 12.V.1986, I.M.; 3 specs, Rodbav (BV), 20.V.1996, M.S.P.

*Host plants:* *Glyceria aquatica* (Warchałowski, 2003).

*Donacia simplex* Fabricius, 1775

*Material:* 1 spec., Brașov Mts (Kronstädter Gebirge), without other data, coll. Fr.D.; 1 spec. (♂), Sinaia, Bucegi Mts (PH), 4.VI.1965, N.S. (Fig. 2 D).

*Host plants:* *Sparganium simplex*, *Glyceria* sp., *Carex* sp., *Typha* sp. (Mohr, 1966, 1968).

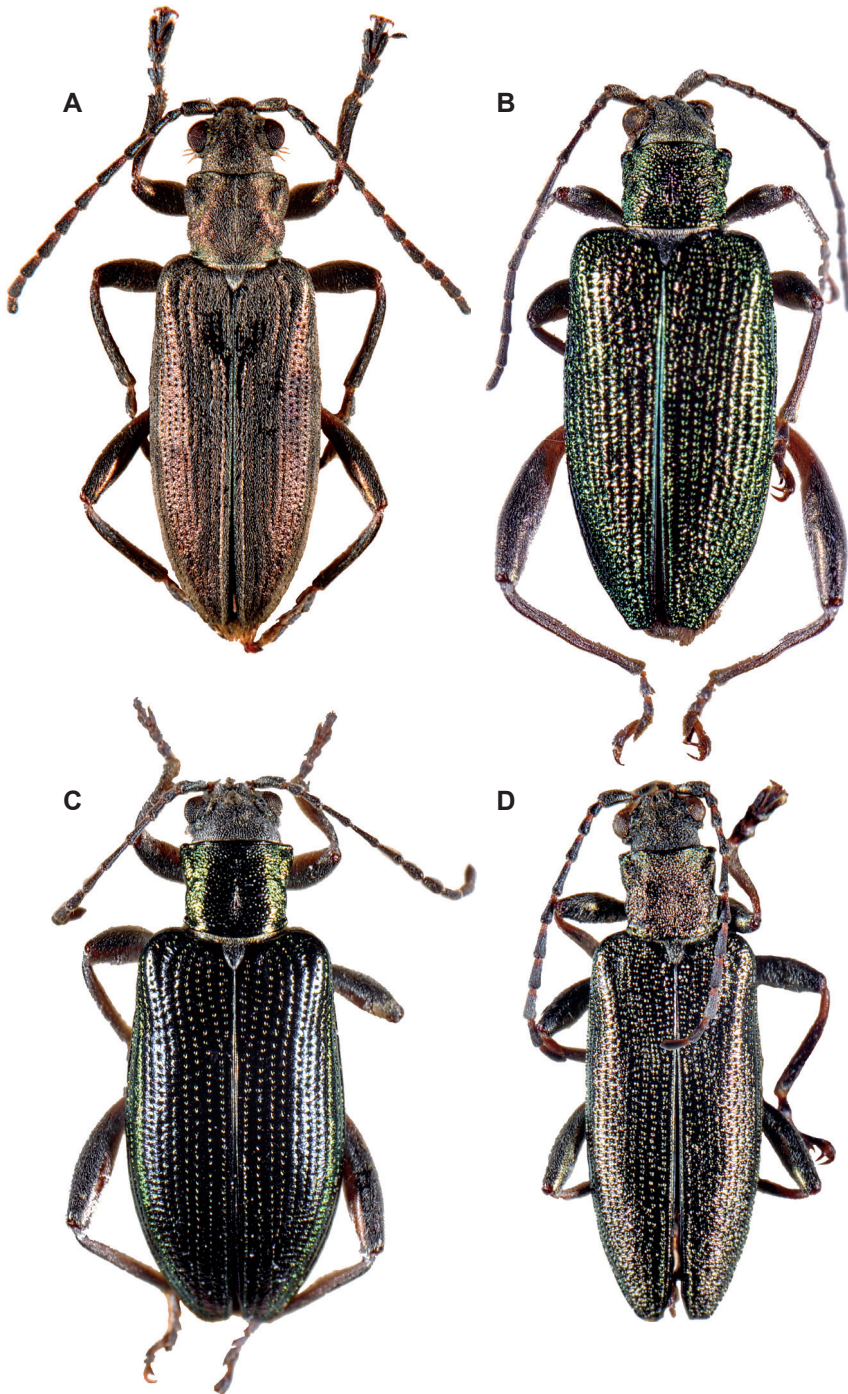


Fig. 2 – A, *Donacia cinerea*, habitus; B, *Donacia dentata*, habitus; C, *Donacia malinowskyi*, habitus; D, *Donacia simplex*, habitus (Photos: G. Năzăreanu).

*Donacia thalassina thalassina* Germar, 1811

*Material:* 1 spec. (♂), Sinaia, Bucegi Mts (PH), 4.VI.1965, N.S.; 1 spec., Caraorman, The Danube Delta (TL), 12.V.1968, X.S.P.; 1 spec., Trăisteni (PH), 8 km upstream Doftana valley, 24.VI.1994, C.P. (Fig. 3, A, B).

*Host plants:* *Scirpus palustris* (Mohr, 1985).

*Donacia tomentosa* Ahrens, 1810

*Material:* 3 specs, C.A. Rosetti, The Danube Delta (TL), 5.VII.1965, Șt.N.; 5 specs, Sulina, The Danube Delta, 17–19.VI.1969, D.I., A.P.G., N.Șt.; 1 spec., Palanca forest, Nicolae Titulescu (OT), 24.VI.1980, D.I.

*Host plants:* *Butomus umbellatus* (Mohr, 1985).

*Donacia versicolore*a (Brahm, 1790)

*Material:* 2 specs (♀, ♂), Germany, Fellbach, Schmiden, without other data.

*Host plants:* *Potamogeton natans*, *Alisma plantago*, *Typha angustifolia* (Mohr, 1985).

*Donacia vulgaris vulgaris* Zschach, 1788

*Material:* 1 spec., București, Tei Lake (IF), 15.VI.1950, M.A.I.; 4 specs, Borcea arm, Ezerul cu Butuci (IL), 30.V.1954, A.P.G.; 1 spec. (♂), Periprava, The Danube Delta (TL), 6.VII.1956; 1 spec. (♀), Babadag Forest (TL), 20.VI.1962, N.S.; 1 spec., Periprava, The Danube Delta (TL), 6.VII.1956, 2–3.VII.1963, X.S.P., A.P.G. (2 specs); 1 spec., Moldova Nouă (CS), 9.VII.1964, N.S.; 2 specs, C.A. Rosetti, The Danube Delta (TL), 5.VII.1965, Șt.N.; Sulina, The Danube Delta (TL), 7–8.VII.1965, Șt.N., A.P.G., M.W. (6 specs), 9.VII.1968, A.P.G. (1 ♂), 18.VI.1969, I.D. (1 spec.); 1 spec., București, Drumul Taberei (Moghioroș) Park (IF), 11.V.1990, M.S.P.; 5 specs, Maliuc, Mila 26, The Danube Delta (TL) 7.VIII.1991, R.S.; 1 spec., Popina Island, Razim (Razelm) Lake, The Danube Delta (TL), 12.VIII.1992, A.P. (Fig. 3 C).

*Host plants:* *Typha latifolia*, *T. angustifolia*, *Sparganium simplex*, *Carex* sp., *Scirpus* sp. (Mohr, 1966, 1985).

## Tribe Haemoniini S.-H. Chen, 1941

*Macrolea* Samouelle, 1819*Macrolea appendiculata* (Panzer, 1794)

*Material:* 1 spec. (♂), France, Aube department, Troyes, coll. A.L.M.; 1 spec. (♀), Lunguleț Lake, Brăila Island (BR), 8.VII.1951, A.P.G.; 2 specs (♀♀), Mostiștea Lake (CL), 14.VI.1952, A.P.G.; 2 specs (♀ and ♂), Căbăl Lake, Borcea arm (the Danube), 21.V.1954, A.P.G.; 1 spec., Murighiol (TL), 15.V.1964, in the stomach of a glossy ibis (*Plegadis falcinellus*), P.Au.

*Host plants:* *Potamogeton natans*, *P. lucens*, *P. pectinatus*, *Myriophyllum spicatum* (Mohr, 1985).

*Macrolea mutica* (Fabricius, 1792)

*Material:* 2 specs, Mamaia resort (CT), 8.VIII.1989, M.F. (one specimen dissected); 4 specs, Costinești Lake (CT), 20.VII.1995, M.S.P., collected on *Zannichellia palustris*.

*Host plants:* A very rare, declining halophilous species trophically associated with submerged plants: *Ruppia maritima*, *Potamogeton filiformis*, *Zostera marina*, *Z.*

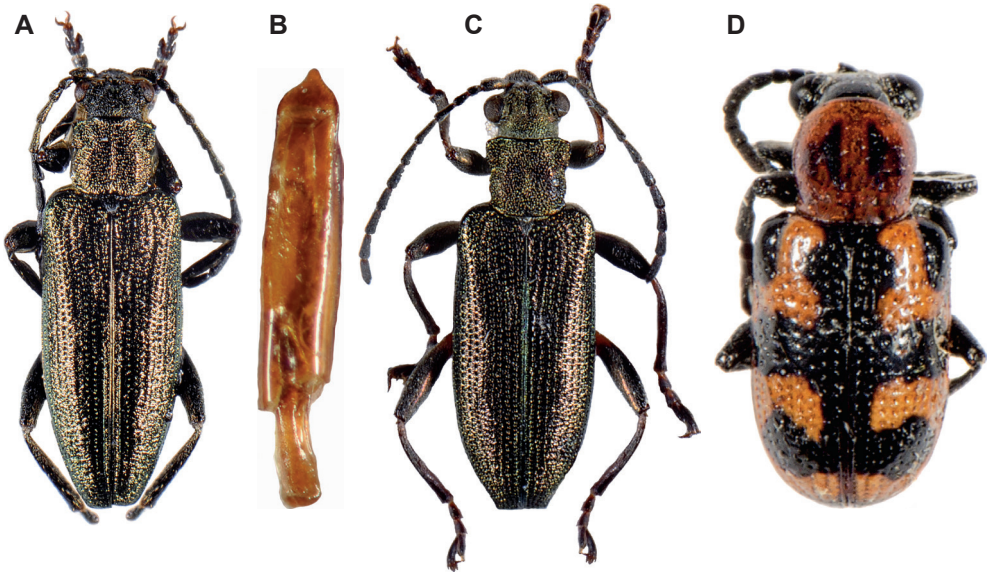


Fig. 3 – A, B, *Donacia thalassina thalassina* (A, habitus; B, aedeagus); C, *Donacia vulgaris vulgaris*, habitus; D, *Crioceris bicrucata*, habitus (Photos: G. Năzăreanu).

*nana*, *Zannichellia* sp. (Głowaciński & Nowacki, 2004); recorded also from *Brasenia schreberi*, *Myriophyllum spicatum*, *Potamogeton maritimus*, *P. pectinatus*, *Zannichellia palustris* (Türkgülü et al., 2011).

#### Tribe Plateumarini Böving, 1922

##### *Plateumaris* C.G. Thomson, 1859

##### *Plateumaris (Euplateumaris) sericea sericea* (Linnaeus, 1760)

*Material*: 1 spec., Öher Moor, 19.V.1952, I.C.; 1 spec., Sinaia, Bucegi Mts (PH), 4.VI.1965, N.S.; 1 spec., Comana Forest (GR), 15.V.1994, P.M.S.; 1 spec., Ieud (MM), 4.VII.1995, P.C.

*Host plants*: *Iris pseudacorus*, *Carex* sp. (Mohr, 1966).

##### *Plateumaris (Plateumaris) braccata* (Scopoli, 1772)

*Material*: 1 spec., Zau de Câmpie (Mezőzáh Tr.) (MS), A.Z. (Graz), coll. Fr. D.; Comorova Forest, Mangalia (CT), 1 – 3.VI.1962, N.S. (136 specs.), 30.V.1963, X.S.P (1 spec.); 1 spec., Agigea (CT), 18.VI.1964, Șt.N. (Fig. 4 A).

*Host plants*: *Phragmites communis* (Mohr, 1966).

##### *Plateumaris (Plateumaris) consimilis* (Schrank, 1781)

*Material*: 1 spec., Brașov Mts (Kronstädter Gebirge) (BV), coll. Fr.D.; 1 spec., Putna Valley (SV) (spruce forest), 23.V.1981, I.C.; 3 specs, Bichigiu (BN), 27.V.1985, D.R.; 1 spec., Sebeșu de Sus (SB), 12.V.1986, I.M.; 1 spec., Turnu Roșu (SB), 13.V.1986, I.M.; 28 specs, Poiana Neamțului, Avrig Valley, Făgăraș Mts (SB), 14 – 21.V.1986, I.M., R.S., I.D.; 1 spec., Sinaia (PH), 20.VII.1994, A.I.; 1 spec., Rotbav (BV), 20.V.1986, M.S.P.; 1 spec., Postăvaru Mt., Brașov (BV), 27.V.1985, M.S.P. (on *Caltha* sp.); 2

specs, Izvorul Albastru al Izei (MM), 6.VII.1995, C.P.; 2 specs, Călinești, Văleni (Secătura f.h.), 7.07.1995, I.M., C.P.; 1 spec., Strâmtura (MM), 7.VII.1995, C.P.; 2 specs, Strâmtura, Slătioara River (Berșotă rivulet) (MM), 7.IX.1995, C.P., A.S.; 17 specs, valley of Frumușeua River, 7 km upstream Crasna Vișeului (MM), 23.VI.1997, C.P.; 13 specs, Repedea f.h., Repedea (MM), 25 – 26.VI.1997, C.P.; 2 specs, Elmo Clearing, 2 km upstream Repedea (MM), 29.VI.1997, S.A., D.R.; 3 specs, Poienile de sub Munte (MM), 30.VI.1997, S.A.; 3 specs, Pleșca chalet, Ocna Șugatag (MM), 14 – 15.VII.1998, C.P., A.V.; 1 spec., Bistra (MM), 21.VII.1998, A.Pe.; 4 specs, Desești, 7 km South of Izvoare health resort (MM), 23.VII.1998, C.P.; 1 spec., Valea Scheilor chalet, Dâmbovița valley, Sățic (AG), 5.VII.2000, A.S.; 2 specs, Valea Beiului, Ochiul Beiului f.h. (CS), 17.IV.2002, M.S.; 7 specs, Zăpodia valley, Sățic, Piatra Craiului National Park (AG), 28.VI.2002, C.P.; 7 specs, Valea Largă, Sățic, Piatra Craiului National Park (AG), 29.VI.2002, C.P.; 4 specs, valley of the river Budescu, Poienile de sub Munte (MM), 14.VI.2003, M.S.; 24 specs, Poienile de sub Munte, the confluence of the rivers Rica and Budescu (MM), 14.VI.2003, C.P.; 11 specs, Poienile de sub Munte, Lutoasa valley, Coșnea f.h. (MM), 14.VI.2003, C.P.; 21 specs, Poienile de sub Munte, Coșnea f.h., 15 – 16.VI.2003, C.P., R.S.; 13 specs, Poienile de sub Munte, 500 m upstream the confluence of the rivers Coșnea and Rica, 15.VI.2003, R.S.; 3 specs, valley of the river Pop Ivan, 12 km upstream Crasna Vișeului (MM), 17.VI.2003 – 18.VII.2004, C.P.; 8 specs, valley of the river Hututeanca, 12 km upstream Crasna Vișeului (MM), 17.VI.2003, P.C.; 6 specs, Dragomirești, Țibleș Mts (MM), 22.VI.2003, M.S., C.P.; 5 specs, Dragomirești, valley of the streamlet Pălcut, Țibleș Mts (MM), 22.VI.2003, C.P.; 4 specs, Dragomirești, valley of the Sfundău streamlet, Baicu f.h., Țibleș Mts (MM), 22.VI.2003, P.C.; 7 specs, Predeal (BV), 6.VI.2004, V.U.; Făina, Vaser valley (MM), 21.VII.2004, C.P. (1 spec.), 19.VI.2005, D.S. (1 spec.); 6 specs, Comana forest (GR), 21.V.2005, Da.K.; 5 specs, Valea Seacă, Brusturet chalet, Piatra Craiului National Park (AG), 21.VI.2005, E.I., C.B.; 13 specs, Sățic, Piatra Craiului National Park (AG), 22.VI.2005, R.S., I.M., M.S., E.I., C.B.; 11 specs, Valea cu Apă, Piatra Craiului National Park (AG), 23.VI.2005, E.I.; 3 specs, Agapia (NT), 23.5.2012, I.Șt.I.; 8 specs, Putna – Vrancea National Park (VN), Mușat pass, 21.VI.2013, I.Șt.I.; 2 specs, Voineșița valley, Voineasa (VL), 21.V.2015, E.I. (Fig. 4 B, C).

*Host plants: Caltha palustris, Carex* sp. (Mohr, 1966).

*Plateumaris (Plateumaris) rustica* Kunze, 1818

*Material:* 1 spec., Hărman (Honigberg) (BV), coll. Fr.D.

*Host plants: Cladium mariscus, Carex* sp. (Mohr, 1966).

Subfamily Criocerinae Latreille 1804

*Crioceris* Geoffroy, 1762

*Crioceris asparagi* (Linnaeus, 1758)

*Material:* Oltina (CT), 15.V.1955, N.S. (2 specs), 24.IV.1956, A.P.G., N.S. (14 specs); 3 specs, Băneasa, Canaraua Fetii (CT), 14.V.1958, N.S.; 1 spec., Babadag Forest (TL), 29.V.1970, N.S.

*Host plants:* pest of *Asparagus officinalis* (Warchalowski, 2003).

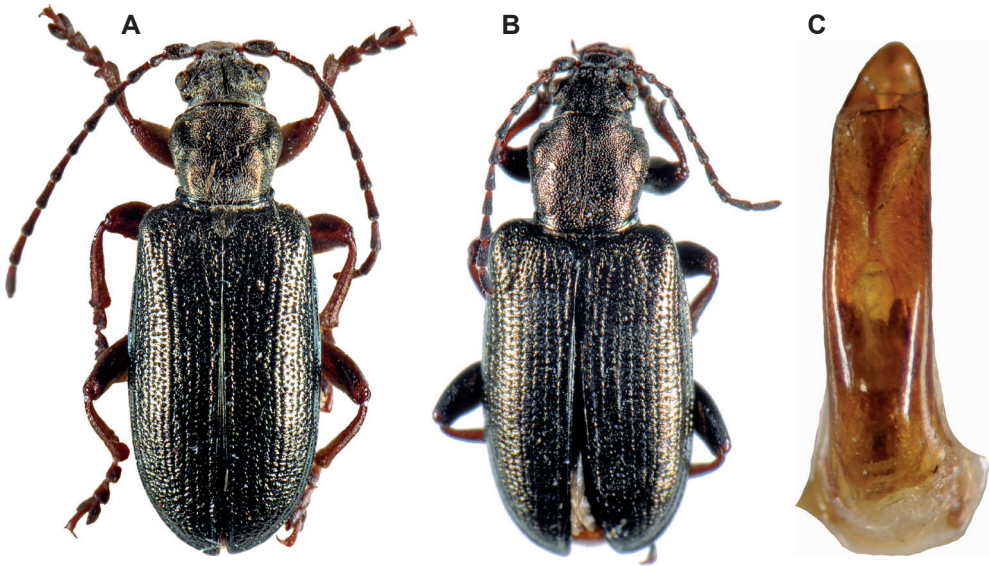


Fig. 4 – A, *Plateumaris braccata*, habitus; B, C, *Plateumaris consimilis*: (B, habitus; C, aedeagus) (Photos: G. Năzăreanu).

*Crioceris bicrucata* (C.R. Sahlberg, 1823)

*Material*: 1 spec., Syria, Safita (34°46'51"N, 36°10'01"E), 241 m a.s.l., 14.V.2010, C.P. (Fig. 3 D).

*Host plants*: *Asparagus sprengeri*, *A. officinalis*, *A. acutifolius* (Turanli et al., 2002).

*Crioceris duodecimpunctata* (Linnaeus, 1758)

*Material*: 1 spec., Măcin (TL), without other data, coll. A.L.M.; 2 specs, Tuzla (CT), without other data, coll. A.L.M.; 1 spec., The royal domain of Broșteni (NT), without other data, A.L.M.; 1 spec., Sibiu (Hermannstadt) (SB), VI.1938; 4 specs, Băile Herculane (CS), 15.VI.1952, N.S.; 4 specs, Oltina (CT), 15.V.1955, N.S.; Periprava, The Danube Delta (TL), 26.VII.1957, I.S., X.S.P. (3 specs), 25.VII.1964, N.S. (2 specs), 5.X.1964, X.S.P. (1 spec.), 29.VII.1967, N.S. (7 specs); 4 specs, Iași (IS), 2 – 5.V.1958, A.P.G.; Băneasa, Canaraua Fetii (CT), 14 – 27.V.1962, N.S. (3 specs), 15.V.1963, N.S. (1 spec.); Hagieni Forest (CT), 19.VI.1962, A.R., A.I. (2 specs), 20.V.1963, N.S. (5 specs), 6.VI.1963, A.P.G. (1 spec.), 29.VI.1963, N.S. (1 spec.), 25.VIII.1964, N.S. (1 spec.), 4.VI.1964, N.S. (7 specs), 24.V.1975, N.S. (1 spec.); Letea Forest, C.A. Rosetti, The Danube Delta (TL), 15.VII.1962, A.P.G. (2 specs), 8.V.1963, I.S. (3 specs), 9 – 11.V.1964, I.S., X.S.P. (15 specs), 26 – 27.V.1980, A.P.G. (4 specs); 1 spec., Craiova (DJ), 5.VI.1964, Șt.N.; 1 spec., Nifon, Hamcearca (TL), 8.VII.1964, I.S.; 1 spec., C.A. Rosetti, The Danube Delta (TL), 20.VII.1964, X.S.P.; Caraorman Forest, The Danube Delta (TL), 9 – 11.V.1967, X.S.P. (2 specs), 18.VI.1967, I.D., Șt.N. (6 specs), 18.VIII.1967, X.S.P., Șt.N. (4 specs), 5.V.1968, A.P.G. (2 specs), 16 – 17.VII.1969, X.S.P. (2 specs), 21.VII.1979, A.P.G. (10 specs); 2 specs, Orșova (CS), 26.IV.1968, Șt.N.; 3 specs, Perchiu (BC), 12.VI.1971; 1 spec., Olimp resort, Mangalia (CT), 19.VII.2003, Ma.F.; 1

spec., Muddy Volcanoes, Pâclele Mici (BZ), 18.VII.2012, I.Șt.I.; 1 spec., the Natural Reserve "Marine Sand Dunes of Agigea" (CT), 2.VIII.2012, L.M.

*Host plants: Asparagus officinalis* (Mohr, 1966).

*Crioceris quatuordecimpunctata* (Scopoli, 1763)

*Material:* 7 specs, Bârlad Valley (VS), without other data, coll. A.L.M.; 2 specs, Pasărea Forest (IF), 8.IV.1951, N.S.; 3 specs, Hanu Conachi (GL), 17.V.1956; Periprava, The Danube Delta (TL), 26.VII.1957, I.S. (2 specs), 20.VII.1960, I.S. (1 spec.), 15.VII.1964, X.S.P. (1 spec.), 15.VII.1964, X.S.P. (1 spec.), 29.VII.1967, N.S. (6 specs); 3 specs, Sadova (IS), 5.VI.1958, A.P.G.; Letea Forest, C.A. Rosetti, The Danube Delta (TL), 16.VII.1962, A.P.G. (2 specs), 29.VI.1963, A.P.G. (1 spec.), 9.V. – 18.VII.1964, I.S., X.S.P. (17 specs), 14.VII.1981, A.B. (1 spec.), 26.VIII.1981, A.P.G. (10 specs); Hagieni Forest (CT), 4.VI.1964, Șt.N. (2 specs), 21.VI.1965, A.P.G. (2 specs); Caraorman Forest, The Danube Delta (TL), 11.V.1967, X.S.P., M.W. (4 specs), 14 – 16.VIII.1967, X.S.P. (5 specs), 1 – 11.V.1968, A.P.G., X.S.P. (9 specs), 3.VII. – 4.X.1968, Șt.N., M.W. (9 specs), 13.VI. – 19.VIII.1969, A.P.G., X.S.P., M.W. (9 specs), 21.VII.1979, A.P.G. (3 specs), 24.VIII.1992, A.P. (5 specs); 5 specs, C.A. Rosetti, The Danube Delta (TL), 11.IX.1979, A.P.G.; 1 spec., Valea lui David (IS), 10.V.2012, I.Șt.I.; 1 spec., Muddy Volcanoes, Pâclele Mici (BZ), 18.VII.2012, I.Șt.I.; 1 spec., Letea, Fântâna lui Omer (TL), 8.VII.2015, E.I.

*Host plants: Asparagus officinalis* (Mohr, 1966).

*Crioceris quinquepunctata* (Scopoli, 1763)

*Material:* 2 specs, Resighea (SM), 25.IV.1986, C.P.; 3 specs, Hașmacul lui Omer, The Danube Delta (TL), 10.V.1995, D.R.; 1 spec., Muddy Volcanoes, Pâclele Mici (BZ), 18.VII.2012, I.Șt.I.

*Host plants: Asparagus officinalis* (Mohr, 1966).

*Lema* Fabricius, 1798

*Lema (Lema) cyanella* (Linnaeus, 1758)

*Material:* 1 spec., Turnu-Roșu (SB), 13.V.1986, I.M.; 1 spec. (♂), Balotești Forest (IF), 20.VI.2007, S.M.

*Host plants: Cirsium* sp. (Mohr, 1966).

*Lilioceris* Reitter, 1913

*Lilioceris lili* (Scopoli, 1763)

*Material:* 1 spec., Bârlad Valley (VS), without other data, coll. A.L.M.; 1 spec., Brăila (BR), 18.VI.1962, N.S.; 1 spec., Negureni (CT), 17.V.1993, M.B.; 2 specs, Canaraua Fetii (CT), 19.V.1993, C.H., M.B.; 1 spec., București, 4.VI.1994, C.H.; 2 specs, Izvorul Dulce, Beceni (BZ), 6.V.2002, V.U.; 1 spec., Valea lui Stan, Făgăraș Mts (AG), 7.VIII.2004, R.S.; 1 spec., Tulcea (TL), 27.IV.2015, I. Șt.I.; 7 specs, Tufești (BR), 11.IV.2015, C.A.

*Host plants: Lilium candidum, L. martagon, Fritillaria imperialis, Convallaria majalis* (Mohr, 1966).

*Lilioceris merdigera* (Linnaeus, 1758)

*Material:* Comana Forest (GR), without other data, coll. A.L.M. (2 specs), 19.V.1958, I.S. (2 specs), 8.VI.1967, V.B. (1 spec.), 17.VI.1976, D.D. (1 spec.), 10.VI.2005, C.B. (2 specs); 1 spec., Mireșu Mare (Nagynyires) (MM), 1916, coll. E.V.; Pasărea

Forest (IF), 29.III.1951, N.S. (4 specs), 30.IV.1953, N.S. (2 specs), 8.V.1963, A.R. (1 spec), 29.IV.1968, X.S.P. (2 specs), 16.IV.2000, C.P. (1 spec.); 1 spec., Pitești (AG), 20.IV.1954, N.S.; Cernica Forest (IF), 29.V.1956, A.R. (1 spec.), 9.IV.2006, M.R. (5 specs); 1 spec., Căldărușani (IF), 23.III.1957, A.R.; 4 specs, Mogoșoaia (IF), 27.IV.1957 – 21.V.1959, X.S.P., A.R.; 2 specs, Giurgiuța (DJ), 6.V.1959; Brănești (IF), 5.VII.1962 – 29.IV.1963, A.R. (5 specs), 1 spec., 27.VI.2007, M.S.; 33 specs, Letea Forest, The Danube Delta (TL), 9.V.1963 – 14.V.1964, I.S., X.S.P.; 5 specs, Sinaia (PH), 28.V.1964, A.R.; 3 specs, Hagieni Forest (CT), 19.VI.1965, A.P.G.; 1 spec., Ion Creangă (NT), 4.V.1966; 1 spec., Trebiș River (BC), 8.VIII.1969; 2 specs, Basta (NT), 4.V.1968 – 23.V.1973; 1 spec., Cheile Turzii (CJ), 4.VI.1968, D.L.; 1 spec., Cocoș Monastery (TL), 16.V.1975, A.C.; 1 spec., Șelătruc chalet, Gutâi Mts (SM), 16.V.1986, R.S.; 1 spec., Negureni (CT), 20.V.1994, G.A.; 1 spec., Călugăreni (GR), 4.VII.1999, C.P.; 1 spec., Bârsa Groșetului, 4 km upstream Plaiul Foi, Piatra Craiului Mts (BV), 9.VI.2000, C.P.; 1 spec., Putna – Vrancea Natural Park (VN), Mușat pass, 21.VI.2013, I.Șt.I.

*Host plants: Convallaria majalis, Polygonatum multiflorum, Lilium sp., Allium sp.* (Mohr, 1966).

*Oulema* Des Gozis, 1886

*Oulema erichsonii* (Suffrian, 1841)

*Material:* 1 spec., București, Băneasa Forest, 12.IV.1988, V.B.; 2 specs, Bârsa Tămașului, Piatra Craiului National Park (BV), 9.VI.2002, C.P.

*Host plants: Nasturtium sp.* (Mohr, 1966).

*Oulema gallaeciana* (Heyden, 1870)

*Material:* 3 specs., Mireșu Mare (MM), 1940, coll. E.V.; 4 specs, Târnava (DJ), 21.VI.1982, I.M.; 1 spec., Izvorul lui Dragoș, Moisei (MM), 13.VII.1996, A.S.; 1 spec., Poienile de sub Munte, Coșnea f.h., 16.VI.2003, C.P.; 1 spec., Săliște, valley of the streamlet Idișor, Țibleș Mts (MM), 23.VI.2003, C.P.

*Host plants: herbaceous species* (Mohr, 1966).

*Oulema melanopus* (Linnaeus, 1758)

*Material examined:* București, without other data, coll. R.C. (30 specs), 18.X.1961, A.R. (1 spec.), 23.VII.1972, A.R. (1 spec.); 1 spec., Strei (Strell) (MS), without other data, R.A.; 3 specs, Mireșu Mare (Nagynyires) (MM), 1941 – 1942, coll. E.V.; Pașărea Forest, Brănești (IF), 4.V.1951 N.S. (1 spec.), 8.VI.1964 leg. I.D. (1 spec.), 20.IV.1962, A.R. (2 specs), 16.VI.1966, A.R. (1 spec.), 13.VII.1978, R.S. (1 spec.), 3.VI.2001, C.P. (6 specs); 1 spec., Băile Pucioasa, Sântimbru (Büdösfürdő) (HR), 1952, coll. E.V.; 1 spec., Târgu Jiu (GJ), 20.VI.1954; 1 spec., Periș (IF), 6.VII.1955; 2 specs, Sinaia (PH), 13.VI.1957, A.R.; Budești (IF), 5.VII.1957, A.R. (2 specs), 3.VI.1967, Șt.N. (1 spec.), 6.VI.1979, M.W. (1 spec.); 1 spec., Mogoșoaia (IF), 22.IV.1958, X.S.P.; 1 spec., Sibiu (SB), 29.VI.1961, A.P.G.; București, Băneasa Forest, 20.IV.1962, A.R. (2 specs), 12.IV.1988, V.B. (3 specs); 1 spec., București, Andronache Forest, 17.V.1962, X.S.P.; Hagieni Forest (CT), 19.VI.1962, A.R. (1 spec.), 14.VI.2013, I.Șt.I. (1 spec.); 3 specs, Brănești (IF), 5.VII.1962, A.R.; 1 spec., Pustnicu Forest (IF), 8.V.1963, A.R.; 1 spec., Ștefănești (IF), 6.IV.1964, X.S.P.; 1 spec., Greci (TL), 30.VI.1964, I.S.; 2 specs, Roman (NT), 13.V.1967, A.R.; Snagov Forest (IF), 29.VI.1967, A.R. (1 spec.), 29.III.1979, G.A. (1 spec.); 1 spec., Eșelnița (MH), 1.VI.1968, X.S.P.; 1 spec., Crișan, The Danube Delta (TL), 17.VII.1969, A.R.; 1 spec., Mircești (IS), 1.VIII.1971, A.R.; 1 spec., Bârlad (VS), 7.VI.1973, A.R.; Valea Beifului, Parcul Național Cheile Nerei –

Beuşniţa (CS), 11.VII.1976, A.P.G. (1 spec.), 16.V.2002, M.S. (8 specs); Comana Forest (GR), 28.III. – 27.VI.1977, G.A. (2 specs), 11.IX.1979, G.A. (1 spec.), 3.VI.1998, A.Pe. (1 spec.), 4.V.2006, R.S. (2 specs); 1 spec., Zăvestreni Forest (TR), 22.VI.1977, R.S.; 2 specs, Esehioi Forest, Bugeac Lake (CT), 11.VII.1977, A.P.G.; 1 spec., Fundulea (CL), 2.VI.1978, M.M.; 1 spec., Slătioara Secular Forest (SV), 6.VIII.1978, M.B.; 2 specs, Oinacu (GR), 18.VI.1979, M.A.; 1 spec., Pintenoaica Forest, Corbii Mari (DB), 21.VI.1979, D.L.; 1 spec., Căldăraru Forest (AG), 27.IX.1979, R.S.; 1 spec., Purani (TR), 27.IX.1979, G.A.; 1 spec., Pestra, Drăgăneşti Olt (OT), 24.IV.1980, G.A.; 2 specs, Nanov Forest (TR), 14.VI.1980, R.S., I.M.; 1 spec., Palanca Forest, Nicolae Titulescu (OT), 23.VI.1980, I.M.; 1 spec., Strehareţ Forest, Slatina (OT), 26.VII.1980, R.S.; 1 spec., Moara Vlăsiei (IF), 6.VIII.1980, R.S.; 2 specs, Saru Forest, Balş (DJ), 25.VI.1981, M.A.; 1 spec., Negoii (DJ), 3.VI.1982, M.W.; 1 spec., Băileşti (DJ), 18.VI.1982, I.M.; 1 spec., Podari (DJ), 20.VI.1982, I.M.; 5 specs, Târnava (DJ), 21.VI.1982, R.S. I.M.; 3 specs, Călugăreni (GR), 10.VII.1983, C.P.; 1 spec., Corlăţel (MH), 15.VII.1983, R.S.; 3 specs, Gura Motrului (MH), 19.VII.1983, C.P.; 2 specs, Argineşti Forest, Gura Motrului (MH), 23.VI.1983, R.S., C.P.; 1 spec., Carei (SM), 14.V.1985, N.G.; 1 spec., Livada (SM), 12.VI.1985, R.S.; 1 spec., Botiz (SM), 28.VI.1985, G.A.; 2 specs., Cărăşeu (SM), 30.VII.1985, C.P., V.G.; 2 specs, Călineşti Oaş (SM), 31.VII.1985, C.P., V.G.; 1 spec., Sebeşu de Sus (SB), 12.V.1986, I.M.; 5 specs, Şelătruc chalet, Gutâi Mts (SM), 16.V.1986, E.C.; Babadag Forest (TL), 10.V.1992, I.M. (1 spec.), 14.VI.2012, I.Şt.I. (4 specs), 13.VI.2013, I.Şt.I. (3 specs); 1 spec., Jaleş Valley, Sohodol Gorges (GJ), 21.VI.1992, A.P.; 1 spec., Canaraua Fetii (CT), 20.V.1993, C.P.; 2 specs, Cârţişoara, Vama Cucului chalet, Făgăraş Mts (SB), 1 – 2.VIII.1994, C.P., C.H.; 1 spec., Negureni Forest (CT), 25.VI.1995, C.P.; 2 specs, Celic Dere (TL), 25 – 29.V.1997, C.P.; 1 spec., Tălăşmani Forest (GL), 12.IX.1997, S.S.; 1 spec., Rona de Sus (MM), 20.VII.1998, C.P.; 1 spec., Crâng Forest, Buzău (BZ), 24.III.2000, V.U.; 1 spec., Bârsa Tămaşului, Pietra Craiului Mts (BV), 9.VI.2002, C.P.; 1 spec., Izvorul Dulce, Beceni (BZ), 22.VI.2003, V.U.; 2 specs, the Natural Reserve “Marine Sand Dunes of Agigea” (CT), 17 – 18.VII.2003, R.S.; 5 specs, Penciu Forest, Braniştea (GR), 22.VI.2004, M.S.; 1 spec., forest on the bank of the Danube River at kilometer 465 (GR), 24.VI.2004, M.S.; 1 spec., Copăniţa islet, The Danube River at kilometer 696, 17.V.2004, M.S.; 1 spec., The National Park “Pietra Craiului”, Sătic (AG), 22.VI.2005, I.M.; 1 spec., Tunisia, at 4 km East of Mides, 16.III.2006, C.P. (Punia Expedition); 3 specs, Tunisia, Kalaat el Andalous, near to Mejerda River (downstream), 29.III.2006, C.P. (Punia Expedition); 6 specs, Turkey, Kahmaranmaraş Province, Kahmaranmaraş, 1.VI.2008, G.B., C.P. (Euphrates Expedition); 1 spec., Râmeţ Gorges, Trascău Mts (AB), 2.VI.2012, I.Şt.I.

*Host plants:* Poaceae: *Avena*, *Dactylis*, *Hordeum*, *Lilium*, *Secale*, *Triticum*, *Zea* (Jolivet, 1953); it can generate important damages in *Triticum* cultures.

*Oulema hoffmannseggii* (Lacordaire, 1845)

*Material examined:* 3 specs., Tunisia, Bou Salem, Mejerda River (downstream), 27.III.2006, C.P.

*Host plants:* reported from Poaceae in northern Africa (Poisson, 1941).

In “Grigore Antipa” Museum’s collections, 21 species of Donaciinae belonging to genera *Donacia* (15 species), *Plateumaris* (four species) and *Macrolea* (two species) are stored, representing about 90% from the total number of species recorded in the Romanian fauna. Among them, *Donacia marginata* Hoppe and *Plateumaris consimilis* Schrank are present in a large number in collection.

The genus *Donacia* is represented in Romania by 18 species (Maican, 2005). Excepting *Donacia brevicornis* Ahrens, *D. antiqua* Kunze and *D. obscura* Gyllenhal, all the *Donacia* species mentioned until now in Romania are preserved in the collection of the museum. The European species *D. malinowskyi* Ahrens is represented in collection by one specimen, belonging to “Friedrich Deubel” collection.

Also, all *Plateumaris* species reported so far in the Romanian fauna are stored in the museum collection: *P. braccata* (Scopoli), *P. consimilis* (Schrank), *P. rustica* (Kunze) and *P. sericea* (Linnaeus).

*Macrolea* genus consists of only seven species: *Macrolea rubipennis* (Reuter), *M. japana* (Jacoby), *M. skomorokhovi* Medvedev, *M. appendiculata* (Panzer), *M. mutica* (Fabricius), *M. ranina* Lou & Yu, *M. huaxiensis* Lou & Liang, all distributed in the Palaearctic region (Lou et al., 2011). Of these, *M. appendiculata* and *M. mutica* are recorded in Romania (Hoinic, 1994; Maican, 2005). They are represented in the museum collection by the material collected from France and South-Eastern Romania.

*Macrolea appendiculata* (Panzer) is classified as endangered species (EN) in German Red List (Geiser, 1998) and critically endangered (CR) in the Czech Republic (Strejček & Bezděk, 2005) and Poland (Pawłowski et al., 2002). This species appears to be very rare throughout the whole European distribution area (Ścibior et al., 2012).

Referring to *Macrolea mutica*, in Poland it is protected by law and classified as critically endangered (CR). Its populations from Poland are in strong regress, being threatened due to increasing pollution of coastal waters of the Baltic Sea (Głowaciński & Nowacki, 2004).

The Criocerinae subfamily is represented by 12 species, belonging to genera *Crioceris* (five species), *Lilioceris* (two species), *Oulema* (four species), and *Lema* (one species). Excepting *Oulema tristis* Herbst, 1786 and *O. duftschmidi* Redtenbacher, 1874, all the Criocerinae species recorded in Romanian fauna are stored in the museum collections.

Most of the material originates from Romania. Also, the collection includes some specimens collected from Austria (belonging to species *Donacia semicuprea* Panzer), Germany (*Donacia versicolore*a Brahm), Western Europe (Gallia)<sup>5</sup> (*Donacia dentata* Hoppe), France (*Macrolea appendiculata* Panzer), Syria (*Crioceris bicrucata* Sahlberg), Turkey and Tunisia (*Oulema melanopus* Linnaeus and *Oulema hoffmannseggii* Lacordaire).

The collection also comprises two species whose present range do not include Romania: *Crioceris bicrucata* C.R. Sahlberg, distributed in Bulgaria, Greece, Asia Minor, the Caucasian countries, Central Asia, and *Oulema hoffmannseggii* Lacordaire, a west-Mediterranean species, recorded in southern France, Iberian Peninsula, Algeria and Morocco (Warchałowski, 2010).

#### ACKNOWLEDGMENTS

The authors express sincere thanks to Dr. Melanya Stan, deputy director of “Grigore Antipa” National Museum of Natural History, for granting access to the collections. Many thanks to Eng. Marian Gulie and George Năzăreanu for photographs, and also to Rada Tiță, Marinela Năzăreanu, Marcela Bugnar, Mariana Foaltin and Dana Ciopec for their help in preparation and labeling of the specimens and the proper conservation of collections. We are also grateful to the anonymous referees for their constructive comments and publishing advice. A part of this study was funded by project no. RO1567-IBB01/2016 from the Institute of Biology Bucharest of Romanian Academy.

<sup>5</sup>Gallia – the region of Western Europe, occupied by France, Belgium and other neighbouring countries.

## REFERENCES

- GEISER, R. (ed.) (1998) Rote Liste der Käfer (Coleoptera) excl. Laufkäfer (Carabidae). In: M. Binot, R. Bless, P. Boye, M. Gruttke & P. Pretschner (eds.), Rote Liste gefährdeter Tiere Deutschlands. Schriftenreihe für Landschaftspflege und Naturschutz, Heft 55. Bonn-Bad Godesberg: Bundesamt für Naturschutz. (in German)
- GŁOWACIŃSKI, Z., J. NOWACKI (eds.) (2004) Polish Red Data Book of Animals, Invertebrates. Institute of Nature Conservation PAS, Kraków, The August Cieszkowski Agricultural University of Poznań. Information on *Macrolepa mutica* available at: <http://www.iop.krakow.pl/pckz/opis.asp?id=169&je=en>, accessed on 2016.08.01.
- HOINIC, C. (1994) A review of the species of *Macrolepa* Samouelle (Coleoptera : Chrysomelidae) in Romania. Travaux du Muséum d'Histoire Naturelle “Grigore Antipa”, 34: 17–30.
- JOLIVET, P. (1953) Les Chrysomeloidea (Coleoptera) des Iles Baléares. Mémoires de l'Institut Royal des Sciences Naturelles de Belgique, 88 pp.
- LOU Q.-Z., P.-Y. YU, H.-B. LIANG (2011) Two new species of *Macrolepa* Samouelle (Coleoptera: Chrysomelidae: Donaciinae) from China, with a key to all known species. Zootaxa, 3003: 1–21.
- LÖBL, I., A. SMETANA (eds.) (2010) Catalogue of Palaearctic Coleoptera. Chrysomeloidea, 6, Apollo Books, Stenstrup, 924 pp.
- MAICAN, S. (2005) Checklist of Chrysomelidae (Coleoptera) of Romania. Travaux du Muséum National d'Histoire Naturelle “Grigore Antipa”, 48: 119–136.
- MAICAN, S. (2006) *Clytrins* (Coleoptera: Chrysomelidae: Clytrinae) from the collections of the “Grigore Antipa” National Museum of Natural History (Bucharest). Travaux du Muséum National d'Histoire Naturelle “Grigore Antipa”, 49: 239–257.
- MAICAN, S. (2007a) Some mediterranean Chrysomelids species (Coleoptera: Chrysomelidae) newly entered in the collections of “Grigore Antipa” National Museum of Natural History [Results of expeditions from Turkey and Tunisia, 2005–2006]. Travaux du Muséum National d'Histoire Naturelle “Grigore Antipa”, 50: 421–429.
- MAICAN, S. (2007b) Contributions to the knowledge of the leaf beetle fauna (Coleoptera: Chrysomelidae) from Maramureş (northern Romania). Entomologica Romanica, 12: 301–324.
- MAICAN, S., R. SERAFIM (2001) Chrysomelidae (Coleoptera) from Maramureş. Travaux du Muséum National d'Histoire Naturelle “Grigore Antipa”, 43: 199–233.
- MAICAN, S., R. SERAFIM (2004) Leaf-beetles (Coleoptera: Chrysomelidae) from Maramureş (Romania). Travaux du Muséum National d'Histoire Naturelle “Grigore Antipa”, 46: 139–159.
- MAICAN, S., R. SERAFIM (2009) Data about Cerambycidae and Chrysomelidae (Coleoptera: Chrysomeloidea) collected from mediterranean expeditions [Results of the “Taurus” 2005, “Focida” 2006, “Punia” 2006, “Atlas” 2007 and “Euphrates” 2008 expeditions]. Travaux du Muséum National d'Histoire Naturelle “Grigore Antipa”, 52: 415–428.
- MAICAN, S., R. SERAFIM (2012) Overview on the Chrysomeloidea superfamily (Coleoptera: Cerambycidae, Orsodacnidae, Chrysomelidae) in Dobrogea (Romania). Travaux du Muséum National d'Histoire Naturelle “Grigore Antipa”, 55 (1): 65–123.
- MOHR, K.-H. (1966) Familie Chrysomelidae. Pp. 95–280. In: H. Freude, K. W. Harde, G. A. Lohse (eds.) Die Käfer Mitteleuropas, Band 9, Cerambycidae, Chrysomelidae, Goecke & Evers Verlag, Krefeld, 299 pp.
- MOHR, K.-H. (1985) Beiträge zur Insektenfauna der DDR: Coleoptera – Chrysomelidae: Donaciinae, Orsodacninae, Criocerinae, Clytrinae. Beiträge Entomologische, Berlin, 35 (2): 219–262.
- NEGRU, ȘT. (1968) Ord. Coleoptera (pars). In: Entomofauna de Țepeș (Delta du Danube). Travaux du Muséum d'Histoire Naturelle “Grigore Antipa”, 9: 81–95.
- NEGRU, ȘT., A. ROȘCA (1967) Ord. Coleoptera. In: L'entomofaune des forêts du sud de la Dobroudja. Travaux du Muséum d'Histoire Naturelle “Grigore Antipa”, 7: 119–148.
- PAWŁOWSKI, J., D. KUBISZ, M. MAZUR (2002) Coleoptera – Chrzyszczce. In: Z. Głowaciński (ed.) Czerwona lista zwierząt ginących i zagrożonych w Polsce, suplement. [Red list of threatened animals in Poland, Supplement]. Instytut Ochrony Przyrody PAN, Kraków, 77 pp. (in Polish)
- POISSON, R. (1941) A propos d'une invasion de *Lema* (Coléoptères Chrysomelidae) sur des céréales dans le département de la Mayenne. Bulletin de la Société Scientifique de Bretagne, 18: 21–25. (in French)
- SCHMITT, M. (2010) Subfamily Criocerinae Latreille, 1804. Pp. 359–368. In: I. Löbl, A. Smetana (eds.) Catalogue of Palaearctic Coleoptera, Vol. 6, Chrysomeloidea. Apollo Books, Stenstrup, 924 pp.
- SERAFIM, R., Ș. MAICAN (2004) Contributions to the knowledge of the Coleopterans from the littoral of the Black Sea (Romania). Travaux du Muséum National d'Histoire Naturelle “Grigore Antipa”, 47: 169–210.

- SERAFIM, R., S. MAICAN (2008) Data on Cerambycidae and Chrysomelidae (Coleoptera: Chrysomeloidea) from București and surroundings. *Travaux du Muséum National d'Histoire Naturelle "Grigore Antipa"*, 51: 387–416.
- SERAFIM, R., S. MAICAN (2011) Catalogue of Cerambycidae, Megalopodidae and Chrysomelidae (Coleoptera: Chrysomeloidea) recently entered in the patrimony of "Grigore Antipa" National Museum of Natural History (Bucharest). Igor Ceianu collection. *Travaux du Muséum National d'Histoire Naturelle "Grigore Antipa"*, 54 (2): 425–460.
- SILFVERBERG, H. (2010) Family Donaciinae Kirby, 1837. Pp. 354–359. *In*: I. Löbl, A. Smetana (eds.) *Catalogue of Palaearctic Coleoptera, Chrysomeloidea, Volume 6*, Apollo Books, Stenstrup, 924 pp.
- ŚCIBIOR, R., R. STRYJECKI, M. NIEOCZYM, J. BEZDĚK (2012) Rare European donacid beetle *Macrolea appendiculata* PANZER, 1794 (Coleoptera: Chrysomelidae: Donaciinae) common in Polish fish ponds. *Polish Journal of Entomology*, 81: 321–330.
- STREJČEK, J., J. BEZDĚK (2005) Chrysomelidae. Pp.: 533–539. *In*: J. Farkač, D. Král, M. Škorpík (eds.) *Červený seznam ohrožených druhů České republiky*. [Red list of threatened species in the Czech Republic. Invertebrates]. Bezobratlí. AOPK ČR, Praha, 760 pp.
- TURANLI, F., F. KAYA, Ş. KISMALI (2002) The faunistical studies on the subfamilies Criocerinae and Cryptocephalinae (Coleoptera: Chrysomelidae) species in Aegean Region. *Turkish Journal of Entomology*, 26 (4): 301–316.
- TÜRKGÜLÜ, İ., A. N. EKİZ, A. GÖK, B. ŞEN (2011) The first representative of the fully aquatic leaf beetle genus *Macrolea* Samouelle, 1819 (Coleoptera, Chrysomelidae) in Turkey: *Macrolea mutica* (Fabricius, 1792), with notes on its biology, habitat, host plant and distribution. *Zoosystematics and Evolution*, 87 (2): 291–295.
- UNGUREANU, V., S. MAICAN, R. SERAFIM (2008) Diversity of coleopterans: Cerambycidae, Chrysomelidae, Coccinellidae from Buzău area (Romania). *Travaux du Muséum National d'Histoire Naturelle "Grigore Antipa"*, 51: 171–183.
- WARCHAŁOWSKI, A. (2003) Chrysomelidae. The leaf beetles of Europe and the Mediterranean area. *Natura Optima dux*. Foundation, Warszawa, 600 pp.
- WARCHAŁOWSKI, A. (2010) *The Palaearctic Chrysomelidae. Identification keys. 1 & 2*. Warszawa, 1212 pp.